

A new method for predicting transport properties of polar firn with respect to gases on the pore space scale

J. FREITAG, U. DOBRINDT and S. KIPFSTUHL

Alfred Wegener Institute for Polar and Marine Research, P.O. Box 120161, D-27515 Bremerhaven, Germany

ABSTRACT. In this study a powerful tool to investigate the permeabilities and effective diffusion coefficients of polar firn is presented using a combination of an experimental method for three dimensional pore structure reconstruction and two models to simulate advective and diffusive transports of gases through the pore space. The reconstruction follows a semi-automated digital analysis of serial surface sections. The simulations are based on a three-dimensional lattice Boltzmann formulation. They separately solve the Navier-Stokes equation and the diffusive transport equations. In a first application effective diffusion coefficients and permeabilities are calculated from firn samples of a core drilled during the North-Greenland-Traversal 1993-95. The estimated relationships of diffusivity and permeability to the open porosity are expressed by power law functions with exponents 2.1 and 3.4, respectively.

INTRODUCTION

A well-known consequence of gas transport within the interconnected pores of polar firn is the difference in age (age) between trapped air and the surrounding ice. The gas transport results in a wide spread of

air ages within pores of a distinct horizon while the surrounding ice is approximately of uniform age. (Schwander and Stauffer, 1984; Trudinger and others, 1997). A reliable estimation of age especially on the longer time scale of glacial and interglacial cycles is of great importance in examining their relation to climate proxies deduced from the ice itself as e.g. isotopic temperatures or aerosol concentrations. A great deal of effort has been devoted to deduce age estimates using macroscopic firnification models (Schwander and others, 1997; Kawamura, 2000). However, it is not evident that the assumed empirical densification model and the transport properties of recent firn are applicable to different climate conditions during glacial times. No reliable error bars of age estimates could be specified due to the lack of knowledge about structure related firn properties and their dependence on temperature, accumulation rate and impurity content.

The gas transport in firn is mainly controlled by molecular diffusion. The diffusion is forced by the concentration gradient which is triggered by concentration changes in the atmosphere. The diffusion takes place through the cramped and tortuous pores of firn. The firn structure effectively lowers the diffusion in comparison to that in free air. Advective transport by air flow due to windpumping or convection plays only a minor role within the firn column, because under recent climate conditions both, the permeability of firn and the driving forces are too small to ventilate more than the uppermost meters, which are approximately 10 to 20% of the firn column height. Therefore the effective diffusion coefficient and its relation to firn structure are of primary interest. Previously measured diffusivity-porosity-relationships done by Schwander and others (1988) and Fabre and others (2000) show only slight variations for firn sintered at different temperatures. However, the regressions are based on data measured in a small range

between 0.15 and 0.37 of open porosity (Fabre and others, 2000) and give rise to unreasonable values in both limits. Above 0.6 the tortuosities of the firn pores tend to values below 1 (lower than for free space and without physical meaning). Below 0.12 the diffusion vanished totally although even below this limit connected pores exist. On the other hand firn with low open porosity is of particular importance because the reduced diffusion in the vicinity of the firn-ice transition affects significantly the age of the isolated air. Furthermore, the influence of differences in firn structure on diffusion increases with decreasing porosity. This is evident when e. g. the tortuosity of a bed of spheres is compared with that of a sintered material. In the porosity range of 0.5 to 1 the tortuosities vary only by a maximum factor of 2 whereas in the lower part of porosity the differences of the tortuosities tend to a factor of 50 and more. Therefore the diffusivity-porosity-relationships for firn sintered at different temperatures might be different for low porosities.

In other studies inverse modeling techniques (Rommelaere and others, 1997, Fabre and others 2000) and trail-and-error methods (Trudinger and others, 1997) are applied to the diffusion process using measured atmospheric and firn air compositions to tune the diffusion-porosity-relationships at several location sites. These studies resulted in markedly different curves at different locations. Interpreting these differences is difficult, because all model errors, such as uncertainties of the density parameterization by ignoring density fluctuations or melting layers are "mapped" into the reconstructed diffusivity values. So far, the relationship between effective diffusion coefficients and open porosity over the whole range of open porosity remains unclear even for recent firn.

Considering firn in glacial times, measurements of $^{15}\text{N}_2$, reflecting the gravitational separation of isotopes dependent on the diffusion column height (DCH), at the Dome Fuji deep ice core, Antarctica, indicate unexpected changes of the DCH during the glacial cycles: the DCH decreases during glacial times whereas the close-off depth is increasing (Kawamura, 2000). If the estimated DCH is correct, the influence of the colder glacial climate on firn structure, diffusivity-porosity relationship and on the whole process of densification would lead to lower diffusion column heights and hence would require new explanations. Sowers and others (1992) postulate non-diffusive zones above the firn-ice-transition. Furthermore, the occurrence of thin impermeable zones in the upper firn column such as melting layers could lead to a significant lowering of diffusion (Trudinger and others, 1997). Until now, the formation of such non-diffusive zones and the condition that controls their thickness are not understood. All aspects mentioned above reveal a lack of knowledge about firn structure for present, and even more, for glacial climate conditions.

The overall aim of this contribution is to provide a method to investigate specific features of firn structures on the pore space scale which allows the estimation of relevant parameters for gas transport such as permeability and effective diffusion coefficients. In the following, the method will be presented in detail and applied in a pilot study to firn samples of an ice core drilled in North-Greenland. The deduced permeability-porosity and diffusivity-porosity relationships are discussed in the context of previous, experimentally derived estimates. Further applications of this method with respect to gas transport in the firn column will be presented elsewhere.

RECONSTRUCTION METHOD (3DRM)

The reconstruction of pore space in firn is based on a serial sectioning method. The experimental set up is placed in a cold room at temperatures of about -20°C . Samples are successively cut by shaving off thin horizontal ice slices with a microtome. Subsequently, the planar surfaces are photographed by a CCD camera (Hamamatsu C3077, CCD: Charge Coupled Device). The camera is mounted on top of the stage with light sources on both sides. During processing the distance between camera and ice surfaces remains constant. The images are taken when the sledge has reached the final position of the microtome track. Before each cut the pore spaces are filled with a white colored mixture of Titanium dioxide powder in oil to enhance the contrast between ice and pore space. The dimension of an ice specimen is approximately 30 mm x 40 mm x 40 mm. The lateral resolution of the digital surface images is 0.074 mm per pixel. The distance of two sequentially photographed surface sections is set to 0.200 mm. However, a single microtome cut reduces the ice thickness by 0.040 mm or less. In the last cut, between pore filling and imaging, only 0.01 mm ice is microtomed off. A set of approximately 200 images are combined to a three dimensional ice-pore-matrix by using well-known tools of digital image processing (Russ, 1995; Gonzalez and Wintz, 1987). The digital images consist of 768 x 512 pixels. The brightness is digitized to 256 levels of grey values.

In a first step the relative position of serial surfaces are tested. Already slight displacements during the imaging process would significantly change the connectivity of the three dimensional structure. To correct the displacements the two dimensional cross correlation functions between adjacent digital images are calculated. The position of the local maximum of each correlation function indicates the necessary

displacement in x- and y-direction (Gonzalez and Wintz, 1987). The images are successively correlated and relocated using windows of 256 x 256 pixels in the center part of the images.

In a second step, the grey level images are analyzed by a segmentation algorithm using two thresholds to obtain binary representations of solid ice and pore regions. The segmentation is a common process in digital imaging to subdivide an image into its constituent regions (Gonzalez and Wintz, 1987). Thresholding is one of the most important approaches to image segmentation. In case of objects with grey levels grouped into two clearly distinguished modes the selection of one threshold is sufficient to separate these modes. Surface images of firn show this bimodal distribution function in grey levels (Figure 1). The maximum grey value max_{pore} in the lower part of the histogram corresponds to predominantly pore representing pixel; the maximum max_{ice} in the upper part corresponds to ice representing pixel. However, a separation by only one threshold between the two maxima would overestimate the pore region because the grey levels of marked regions beneath the surface overlap with the wide area of pore representing values. Therefore a set of two thresholds are defined. The first threshold T_1 is defined as $T_1 := max_{pore} + 2 \sigma$, whereas the standard deviation σ is derived by fitting a Gaussian function onto the lower part of grey levels (Figure 1). T_1 usually varies between 5 and 50 and separates only the narrow region of grey levels that is assumed as explicit pore representing pixels. In addition a fraction of mixed pixels at the ice-pore-interface has to be added to the pore representing pixels. A mixed pixel represents an area covered by both ice and pores with a mean grey value that is weighted by their fraction of coverage. Due to the small-scale structures the images consist of a large amount of mixed pixels. To separate pore representing mixed pixels a second threshold T_2 is defined as a mean grey value of the two maxima given by $T_2 := (max_{pore} + max_{ice})/2$. T_2 varies between 100 and 128. A mixed pixel is classified as

a pore, if its grey value g_v is less than T_2 and if at least one adjacent pixel representing a pore with a grey value $g_v < T_1$ (to make sure that the considered pixel is at the ice-pore-interface). All residual pixels are assigned to the ice phase.

The total porosity n of the reconstructed firn cube is simply given by the ratio of pore representing pixels to the sum of ice and pore representing pixels. Pores which are via the pore phase connected to two opposite sites of the firn cube are defined as open pores. Then the open porosity n_{op} is given by the ratio of open pore representing pixels to the whole number of ice and pore representing pixels. In the models described below the open pores are estimated with respect to the cube sites in direction of the imposed pressure and concentration gradients.

MODELS OF GAS TRANSPORT

Two independent models for advective and diffusive transport are developed. Both models are based on the lattice Boltzmann formalism. In recent years lattice Boltzmann models (LBM) are applied to various problems described by partial differential equations, for example to hydrodynamics in three dimensions, flow through porous media, immiscible fluids and diffusion-reaction problems (Wolf-Gladrow, 2000). The LBMs are ‘bottom-up’ approaches, where the starting point is a discrete microscopic grid model which by construction conserves the desired quantities. However, the derivation of the corresponding macroscopic equations requires lengthy calculation by multi-scale analysis and goes beyond the scope of this paper. The next section outlines the specific model constructions with focus on the handling of the boundary conditions. For more detailed derivations of LBMs see Wolf-Gladrow (2000).

The advection-model

The advection-model solves the Navier-Stokes-equations for an incompressible fluid with Reynolds numbers less than 1 to simulate laminar flow through the reconstructed pore space. In the following we use advection to mean fluid movement within the pores of firn whereas others use it to describe the downward movement of air with the surrounding firn layers, due to snow accumulation at the surface what is not addressed in this paper. From the flow field simulation on the pore scale the structure related permeability k of porous firn is calculated. k is defined in Darcy's law

$$\mathbf{u}_d = -k \frac{1}{\mu} \nabla p \quad (1)$$

with permeability k [m^2], specific discharge \mathbf{u}_d [m s^{-1}], pressure gradient along main flow direction ∇p [N m^{-3}] and fluid viscosity μ [$\text{kg m}^{-1} \text{s}^{-1}$].

For the advection-model a cubic lattice with 19 velocities on each grid point in combination with the BGK (after Bhatnagar, Gross and Krook, 1954) collision term is used. The BGK collision term was originally introduced by d'Humieres and others (1986) for hydrodynamic simulations. The normalized velocities of this lattice allow a mass and momentum exchange to the next 18 neighbored nodes. In cartesian coordinates they read

$$\mathbf{c}_0 = (0,0,0)$$

$$\mathbf{c}_{1,2}, \mathbf{c}_{3,4}, \mathbf{c}_{5,6} = (\pm 1, 0, 0), (0, \pm 1, 0), (0, 0, \pm 1) \quad (2a,b,c)$$

$$\mathbf{c}_{7,8,9,10}, \mathbf{c}_{11,12,13,14}, \mathbf{c}_{15,16,17,18} = (\pm 1, \pm 1, 0), (\pm 1, 0, \pm 1), (0, \pm 1, \pm 1).$$

The local equilibrium distributions (F_i^{eq}) of the mass density on the grid can be written as

$$F_0^{eq} = \frac{1}{3} \rho \left(1 - \frac{3}{2} \mathbf{u}^2 \right)$$

$$F_i^{eq} = \frac{1}{18} \rho (1 + 3\mathbf{c}_i \mathbf{u} + \frac{9}{2} (\mathbf{c}_i \mathbf{u})^2 - \frac{3}{2} \mathbf{u}^2) \quad \text{for } i=1, \dots, 6 \quad (3a,b,c)$$

$$F_i^{eq} = \frac{1}{36} \rho (1 + 3\mathbf{c}_i \mathbf{u} + \frac{9}{2} (\mathbf{c}_i \mathbf{u})^2 - \frac{3}{2} \mathbf{u}^2) \quad \text{for } i=7, \dots, 18$$

with density ρ and velocity \mathbf{u} . The kinetic equation, that described the time development of the distribution functions (Qian and others, 1992) reads:

$$F_i(\mathbf{x} + \mathbf{c}_i, t + 1) = (1 - \omega) F_i(\mathbf{x}, t) + \omega F_i^{eq}(\mathbf{x}, t) \quad (4)$$

where i is the index for the lattice velocities and ω the collision frequency. The mass and momentum densities $\rho(\mathbf{x}, t)$ and $\mathbf{j}(\mathbf{x}, t)$ at the grid point \mathbf{x} are defined as mean values of $F_i(\mathbf{x}, \mathbf{u}, t)$ over velocity space:

$$\rho(\mathbf{x}, t) = \sum_i F_i(\mathbf{x}, t) \quad \mathbf{j}(\mathbf{x}, t) = \rho(\mathbf{x}, t) \mathbf{u}(\mathbf{x}, t) = \sum_i \mathbf{c}_i F_i(\mathbf{x}, t) \quad (5a,b)$$

It can be shown that $\rho(\mathbf{x}, t)$ and $\mathbf{j}(\mathbf{x}, t)$ obey the Navier-Stokes equation whereby the kinematic shear viscosity η depends on ω . For proper choice of ω in the range between 0 and 2 the viscosity can be adjusted to the viscosity of any desired fluid:

$$\eta = \frac{2 - \omega}{6} \quad (6)$$

The pressure $p(\mathbf{x}, t)$ is defined up to an arbitrary additive constant p_0 and given by the density field as:

$$p(\mathbf{x}, t) = \frac{1}{3} \rho(\mathbf{x}, t) - p_0 \quad (7)$$

The non-equilibrium distribution functions F_i have to be calculated at each new time step $t+1$. The F_i propagate from the grid point $(\mathbf{x}-\mathbf{c}_i)$ to the point (\mathbf{x}) . For the grid points on the boundaries not all F_i are known, because some points from which propagation starts are outside of the domain and some F_i are propagating out of the domain. Boundary conditions which can be used in this work must conserve mass and fulfill the no-slip conditions between the fluid (gas phase) and the solid phase. Therefore the halfway bounce-back scheme (HBS, see He and others, 1997) is applied: For two neighboring nodes – one ‘wet’

node (gas phase) and one ,dry‘ node (solid phase) – the boundary is located halfway between these two nodes. Particle distributions propagate from wet to dry nodes and vice versa. On the dry nodes no collision or forcing takes place. If a distribution propagates from a wet node to a dry node the distribution oriented reverse direction of the dry node is set equal to that ,wet‘ distribution. Thus the original distribution is bounced back from the dry node to the original wet node in the next time-step. It depends on the relative position of wet and dry nodes which distributions are reflected. Complete changing of all contrary oriented distributions fulfills the HBS for all positions. Along the open boundaries at $\mathbf{x} = (x,y,0)$ and $\mathbf{x} = (x,y,z_{\max})$ the gradient of the velocities in direction of the main flow (z-direction) must vanish. This requires that $F_i(x,y,0)$ propagates to $F_i(x,y,1)$ for $i = 5, 11, 12, 15, 17$ and $F_i(x,y,z_{\max})$ propagates to $F_i(x,y,z_{\max}-1)$ for $i = 6, 13, 14, 16, 18$. The forcing of the LBM is implemented by an imposed pressure difference between the model boundaries in the direction of the main flow at $\mathbf{x} = (x,y,0)$ and $\mathbf{x} = (x,y,z_{\max})$. In the notation of the LBM it is equivalent to a density difference (equation 7). The density difference is distributed symmetrically on both boundaries so that the arithmetic average is equal to the density ρ_0 of the internal nodes at the time $t = 0$. The model starts always with $\mathbf{j}(\mathbf{x},t=0) = 0$ and $\rho_0 = \rho(\mathbf{x},t=0) = 1$. The imposed pressure difference is kept constant during all model iterations.

The model calculates the local pressure (density) and velocity vectors. Using relation (1) the macroscopic permeability of the firm cube is calculated by

$$k = \frac{\nu L}{p} u_d = \frac{\nu L}{p} \frac{m}{A} \overset{CS}{q_z(x_m, t_{end})} \quad (8)$$

where ΔL is the distance of two vertically oriented cross sections with pressure difference Δp . A is the total surface cross section area. u_d is the specific discharge in z-direction and can be expressed as the sum

of the local velocities in z-direction q_z in an arbitrary cross section divided by A . m is the index for the ,wet‘ nodes in the cross section CS.

The diffusion-model

The diffusion-model solves the diffusion equation within the complex pore structure excluding all kinds of adsorption processes. It simulates diffusion paths and enables to calculate the effective diffusion coefficient D_{eff} of firn. D_{eff} of porous media is defined in Fick’s law:

$$\mathbf{j} = -D_{eff} \nabla C \quad (9)$$

with effective diffusion coefficient D_{eff} [$\text{m}^2 \text{s}^{-1}$], flux \mathbf{j} [$\text{mol m}^{-2} \text{s}^{-1}$] and concentration gradient ∇C [mol m^{-4}]. The relation to the diffusion coefficient D is given as

$$D_{eff} = \frac{n_{op}}{\tau} D \quad (10)$$

with a constant diffusion coefficient D of a specific gas in free air [$\text{m}^2 \text{s}^{-1}$], the open porosity n_{op} and its tortuosity τ of the porous structure. The dependency of D on temperature and pressure is not included.

For the diffusion-model a cubic lattice with 6 lattice velocities on each grid point is sufficient (Toffoli and Margulos (1990) in Wolf-Gladrow, 1995). The lattice velocities read $\mathbf{c}_0, \mathbf{c}_{2,3}, \mathbf{c}_{4,5} = (\pm 1, 0, 0), (0, \pm 1, 0), (0, 0, \pm 1)$. The kinetic equation with the BKG collision term looks like the one in the advection model. Here, the concentration $C(\mathbf{x}, t)$ is given as the sum over the distribution functions $C_i(\mathbf{x}, t)$. The local equilibrium distributions $C_i^{eq}(\mathbf{x}, t)$ can be written as

$$C_i^{eq} = \frac{C(x, t)}{6} \quad \text{for } i=0, \dots, 5 \quad (11)$$

$C(\mathbf{x},t)$ obeys the diffusion equation (Wolf-Gladrow, 1995) where the free air diffusion coefficient D

depends on ω as

$$D = \frac{2 - \omega}{6\omega} \quad (12)$$

The boundary conditions are expressed by the half-way-bounce-back scheme like in the advection-model.

The scheme conserves the mass within the gas phase. No absorption takes place at the pore-ice surfaces.

To prevent diffusion to the outside the cube surfaces are sealed by a solid grid point layer.

The forcing is implemented by an imposed concentration difference between two opposite model boundaries at $\mathbf{x} = (x,y,1)$ and $\mathbf{x} = (x,y,z_{\max}-1)$. The values at the boundaries are kept constant during the model iterations. The model starts with a linear concentration profile which is the solution in case of free diffusion.

The effective diffusion coefficient D_{eff} of the firn cube results from the calculated total fluxes in direction of the imposed concentration gradient $\Delta C/\Delta L$ using relation (9):

$$D_{eff} = \frac{- \sum_{m \in CS} j_z(x_m, t_{end})}{\frac{C}{L}} \quad (13)$$

whereby the total concentration flux in z-direction is the sum over the local fluxes $(j_z)_m$ in an arbitrary vertical cross section. The local flux in z-direction at node \mathbf{x}_m is given by the mean value of the local propagated distribution functions $C_4(\mathbf{x}_m,t)$ and $C_5(\mathbf{x}_m,t)$. m is the index for the 'wet' nodes in the cross section CS.

METHODOLOGICAL ASPECTS

The three dimensional reconstruction (3DRM) of firn encloses several potential sources of errors. Foremost, they could occur during sample preparation when pores only partially filled or the marker is smeared over the ice after microtoming. To avoid inaccurate preparations several ice surfaces marked by different mixtures were analyzed under microscope. It turned out that a mixture of Titanium dioxide in oil with a weight ratio of 3 to 4 is most suitable. In comparison to the favored resolution of 0.1 mm the error is negligible. During imaging a uniform and sufficient illumination without over- or underexposures prevents additional errors. However, the segmentation algorithm has problems to distinguish between marked pores at the ice-surface and beneath it when the marked pores underneath the ice have horizontal oriented pore-ice-interfaces. For this reason the segmentation tends to overestimate pore regions. Furthermore, the finite vertical and lateral resolution causes errors. The thickness of the microtome cut directly after pore filling and before imaging defines the lower limit of pore detection. All pore cuts with a vertical dimension of 0.01 mm or less are ignored and lead to an underestimation of pore regions. The limitation of the lateral resolution to 0.1 mm implies a relative high number of mixed pixels. Assuming circular pores of 1 mm in diameter approximately 20% of the pore representing pixels are mixed pixels. To handle this the second threshold was introduced in the segmentation algorithm. As far as mixed pixels are independently recorded no systematic deviations in the calculated pore and ice fractions are expected.

To validate the 3DRM the total porosity is measured independently by gamma-absorption (Wilhelms, 1996). Figure 2 displays the porosity of a firn core, 98 mm in diameter, measured by gamma absorption with a resolution of 1 mm. In comparison to that the porosity of the same firn horizon is plotted measured by the 3DRM with a vertical resolution of 0.2 mm on a cube segment of 24 mm length. The mean values of both porosity curves are in good agreement. The porosity measured by 3DRM has

better resolution and shows more variations with depth. The porosity measured by gamma absorption is always used as a control parameter for the 3DRM.

The model algorithms are tested on simplified geometries with well-known analytical solutions. For the verification of the advection-model we simulated Hagen-Poiseuille-flow in a short cylindrical pipe with radius of 2.45 mm, length of 10.2 mm and a pixel resolution of 0.1 mm. The flow is forced with a pressure difference of 0.005 mbar. That results in a Reynolds number of approximately $Re = 0.4$ if using water as model fluid. The small Re-number ensures laminar flow and stable solutions. Convergent behavior of the absolute value of momentum in the model system indicates the convergence towards a stable solution during the iteration process. For this specific geometry the stable stage was reached already after 4000 iterations. The deviations between the modeled and analytical solution for the radial velocity field and the pressure gradients are in the range of 1%. Up to 2% is obtained for the calculated permeability. The diffusion-model is validated with the diffusion in free air. That leads to deviations of less than 1% between modeled concentration profiles and the analytical solutions.

Furthermore the effect of reduced number of grid points in presenting flat channel geometries is investigated. In a series of simulations the channel height is continuously reduced from 10 to 2 grid points. Width and length are fixed to 180 and 100 grid points, respectively. The model results are compared with the analytical solution of two dimensional channel flow. A channel with a height of only two grid points leads to reduced simulated permeability of 80% of the analytical solution and only slightly reduced diffusion of 99%. Already for channels represented by 5 or more grid points, the simulated and analytical solutions yield the same value. The low grid point resolution enables the

application of our models to complex pore structures without the need of a large number of grid points. The resolution of the 3DRM is set to the upper limit of 0.1 mm and result in a representation of typical pore sizes in real firn structures by 5 or more grid points. Additionally, when the models are applied to polar firn, the necessary size of the ice specimen to provide characteristic values for diffusivity and permeability has to be determined. For that the hydraulic properties are modeled for a firn cube as a whole and for several subsections of different length. Figure 3 displays the different diffusion profiles for single subsections and the composition of all subsections to the whole cube. The effective diffusion coefficients of the composites are derived using the equation

$$D_{eff} = \frac{L}{m \frac{L_i}{(D_{eff})_i}} \quad (14)$$

with a total cube length L composed by m layers of height ΔL_i and effective diffusion coefficient $(D_{eff})_i$. The composites of sections with length smaller than 6 mm overestimates the hydraulic properties because the tortuosity of firn is not completely developed on this scale. Only when the cube length exceeds 12 mm the composites result in the same total diffusivity than the simulated one of the whole cube. Therefore all model runs are done on firn cubes with a length size of at least 12 mm. Using a SUN work station Ultra 10 approximately 10 hours of CPU time is needed for one simulation.

APPLICATION TO GREENLAND FIRN

Reconstruction and model simulations are performed on Greenland firn samples from an ice core (B27) drilled at N76°39' W46°29' in 1995. 12 samples were selected from 57 m, 45 m and 16 m depth. On each horizon a group of four serial cubes were analyzed which cover a depth interval of 19 cm. Assuming an

accumulation rate of 18 cm water equivalent per year and mean porosities of 0.16, 0.21 and 0.45 the reconstructed intervals represent 60% to 90% of an annual layer.

Figure 4a shows a typical three dimensional reconstruction of firn with a cube length of 12 mm. Imposing a constant pressure difference the simulation of the advection-model yields a flow field that is plotted in figure 4b. The flow concentrates on dominant paths which are uniformly distributed over the whole cube. An impression of diffusion through the pores forced by a constant concentration difference at opposite sites gives figure 4c. Already the visualized uniform permeation and diffusion suggest a high degree of isotropy on the pore scale. Model runs in all three dimensions on the same firn cubes are performed. A direct comparison of lateral and vertical components reveals almost isotropy in diffusivity as well as in permeability with slightly reduced lateral components. The ratio between lateral and vertical oriented permeability varies between 0.3 and 1.3; the ratio for the effective diffusion coefficients varies between 0.6 and 1.2.

In figure 5 the dependence of the transport properties (k , D_{eff}/D) on open porosity n_{op} are plotted. n_{op} varies between 0.05 and 0.45. Both the D_{eff}/D versus n_{op} - and k versus n_{op} -relation are described by power law functions with different exponents:

$$\frac{D_{eff}}{D} = n_{op}^{2.1} \quad \text{and} \quad k = 10^{-7.7} m^2 n_{op}^{3.4} \quad (15a,b)$$

Independent estimates of the D_{eff}/D versus n_{op} -relationship were made by Schwander et al. (1988, regression 2) and Fabre et al. (2000, regression 4). They determined effective diffusion coefficients in analyzing the shape of an elution peak of a given gas pushed through the firn sample by a carrier gas.

Fabre et al. (2000) pointed out that for $n_{op} < 0.15$ the experimental technique is no longer valid. For $n_{op} > 0.15$ the model data fit fairly well in the range of their calculated regression curves. Below $n_{op} = 0.15$ the trends diverge. The diffusion disappears at $n_{op} = 0.12$ when using the regression curves of Schwander and others (1988) and Fabre and others (2000). Although Fabre and others (2000) explicitly refer to open porosity (and not total porosity!), it is not reasonable to assume that any gas transport stops for $n_{op} < 0.12$ although connected pores exist. Therefore, the derived power law function with exponent 2.1 seems to be a more realistic description of D_{eff}/D versus n_{op} -relation in polar firn.

The estimated k versus n_{op} -relation for polar firn follows a power law function with exponent 3.4 what is much higher than for diffusion. It results in a higher sensitivity of advection against slight variations in open porosity. Both relationships illustrate the specific change of transport properties during densification of polar firn by the sintering process. Other sintered materials show comparable k versus n_{op} -relations like sandstone with exponent 3 (Doyen, 1988) or hot pressed calcite aggregates with exponent 3.8 (Zhang and others, 1994). Permeability measurements of the top meter of polar firn performed by Albert and others (2000) validate the absolute values of model data for high porosities. The estimated k versus n_{op} -relation shows only slight data spreading. A reason could be that the simulations are carried out on samples of smallest possible size where variations of porosity are minimized.

It should point out, that applying both the D_{eff}/D versus n_{op} - and k versus n_{op} -relation to polar firn a profile of open porosity is required. In the context of the whole firn column only pores with contact to atmosphere are open pores. A scale of tens of meters is involved in estimating open porosity within the firn column having in mind that seasonal density fluctuations or impermeable layers near the firn-ice

transition could separate pore clusters on a scale of meter without any connection to the open pores. Consequently the open porosity of the reconstructed firn cubes could differ from the open porosity of its firn layer within the firn column. However, for the estimation of the effective diffusion coefficients (and permeability) the size of the reconstructed firn cubes is large enough to reflect the characteristic tortuosity of the pore structure as it is shown by reaching constant coefficients for cube sizes larger than 12 mm (Figure 3).

SUMMARY

In this study we presented a new method for the estimation of transport properties of porous media using three-dimensional reconstructions in combination with model simulations on the pore scale. Its application to the complex pore structure of polar firn was demonstrated. It was shown that promising modeling on three dimensional firn reconstructions did not exceed the contemporary computer capacities.

The method was applied to Greenland firn ice. It provides realistic D_{eff}/D versus n_{op} - and k versus n_{op} - relationships following power law functions with exponents 2.1 and 3.4 over the wide range of one order of magnitude in open porosity. The investigation of lateral and vertical components reveals almost isotropy in the transport properties with slightly reduced lateral values.

In future the presented method could be helpful for plenty of questions which are linked to firn structure. Further information about structure like the pore-size and ice-cluster distributions, the amount of free surfaces and the pore connectivity can be easily derived from the three dimensional reconstructions using

standard image analysis software. An interesting topic, that has to be solved on the pore scale, is to investigate the evolution of stratigraphical characteristics during densification, especially the development of impermeable layers.

ACKNOWLEDGEMENTS

We are grateful to Pavla Doroshkevych who prepared a lot of serial images. We would like to thank to Hubertus Fischer, Dieter Wolf-Gladrow, Fernando Valero Delgado and two anonymous referees for helpful comments on the manuscript.

REFERENCES

- Albert, M. R., E. F. Shultz and F. E. Perron. 2000. Snow and firn permeability at Siple Dome, Antarctica. *Ann. Glaciol.* 31, 353-356.
- Bhatnagar, P., E. P. Gross and M. K. Krook. 1954. A model for collision processes in gases. I. Small amplitude processes in charged and neutral one-component systems. *Phys. Rev.*, **94**(3), 511-525.
- D'Humières, D., P. Lallemand and U. Frisch. 1986. Lattice gas models for 3D hydrodynamics. *Europhys. Lett.*, **2**(4), 291-297.
- Doyen, P. M. 1988. Permeability, Conductivity, and Pore Geometry of Sandstone. *J. Geophys. Res.* **93** (B7), 7729-7740.

Fabre, A., J.-M. Barnola, L. Arnaud and J. Chappellaz. 2000. Determination of gas diffusivity in polar firn: comparison between experimental measurements and inverse modeling. *Geophys. Res. Lett.*, **27** (4), 557-560.

Gonzalez, R. C. and P. Wintz. 1987. Digital image processing. Addison-Wesley Publishing Company, U.S..

He, X., Q. Zou, L.-S. Luo and M. Dembo. 1997. Analytic solutions of simple flows and analysis of nonslip boundary conditions for the lattice boltzmann BGK model. *J. Stat. Phys.*, **87**(1/2), 115-136.

Kawamura, K. 2000. Variations of atmospheric components over the past 340.000 years from Dome fuji deep ice core, Antarctica. (Ph. D. Thesis, University of Tokio.)

Qian, Y. H., D. d'Humières and P. Lallemand. 1992. Lattice BGK models for Navier-Stokes equation. *Europhys. Lett.*, **17**(6), 479-484.

Rommelaere, V., L. Arnaud and J.-M. Barnola. 1997. Reconstructing recent atmospheric trace gas concentrations from polar firn and bubbly ice data by inverse methods. *J. Geophys. Res.*, **102**(D25), 30069-30083.

Russ, J. C. 1995. The image processing handbook. CRC Press, Florida, U. S..

Schwander, J. and B. Stauffer. 1984. Age difference between polar ice and the air trapped in its bubbles. *Nature*, **311**, 45-47.

Schwander, J., B. Stauffer and A. Sigg. 1988. Air mixing in firn and the age of the air at pore close-off, *Ann. Glaciol.*, **10**, 141-145.

Schwander, J., T. Sowers, J.-M. Barnola, T. Blunier, A. Fuchs and B. Malaizé. 1997. Age scale of the air in the summit ice: Implication for glacial-interglacial temperature change. *J. Geophys. Res.*, **102** (D16), 19483-19493.

Sowers, T., M. Bender, D. Raynaud and Y. S. Korotkevich. 1992. ^{15}N of N_2 in Air Trapped in Polar Ice: a Tracer of Gas Transport in the Firn and a Possible Constraint on Ice Age-Gas Age Differences. *J. Geophys. Res.*, **97**(D14), 15683-15697.

Toffoli, T. and N. Margolus. 1990. Invertible cellular automata: A review. *Physica D* **45**, 229-253.

Trudinger, C. M., I. G. Enting, D. M. Etheridge, R. J. Francey, V. A. Levchenko and L. P. Steele. 1997. Modeling air movement and bubble trapping in firn. *J. Geophys. Res.*, **102**(D6), 6747-6763.

Wilhelms, F. 1996. Leitfähigkeits- und Dichtemessung an Eisbohrkernen. *Ber. Polarforsch.*, **191**.

Wolf-Gladrow, D. 1995. A Lattice Boltzmann Equation for Diffusion. *J. Stat. Phys.*, **79**(5/6), 1023-1032.

Wolf-Gladrow, D. 2000. Lattice-Gas Cellular Automata and Lattice Boltzmann Models – An Introduction. Springer-Verlag, Germany.

Zhang, S., M. S. Paterson and S. F. Cox. 1994. Porosity and permeability evolution during hot isostatic pressing of calcite aggregates. *J. Geophys. Res.*, **99**(B8), 15741-15760.

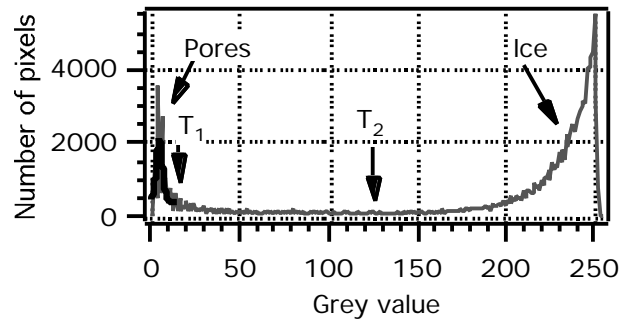


Figure 1: Bimodal grey value histogram of a surface image (grey curve) including a Gaussian fit of the pore region (black curve) and the estimates of both thresholds T_1 and T_2 that are used for segmentation.

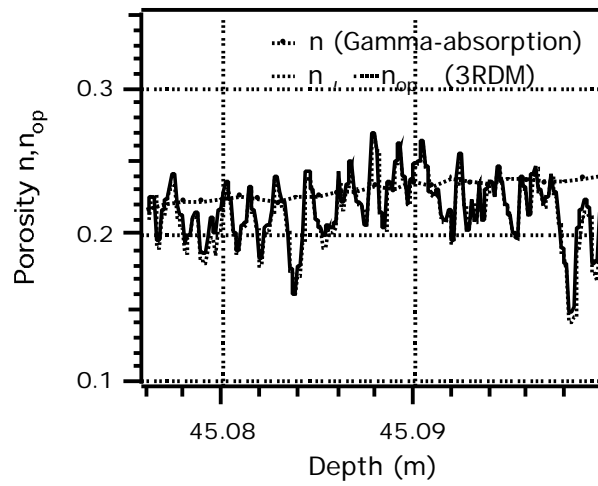


Figure 2: Porosity profiles estimated from the 3DRM and by Gamma absorption for an arbitrary depth interval.

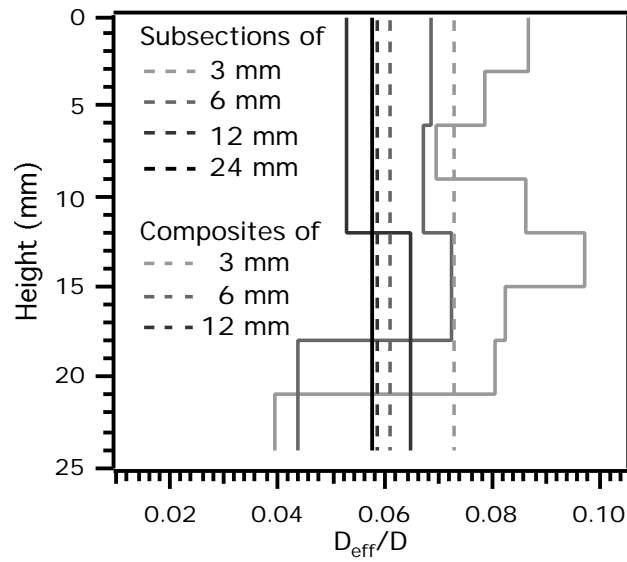


Figure 3: Diffusion profiles of the same firn cube divided into different subsection lengths. The dashed lines represent the calculated diffusivity of their composites in serial order.

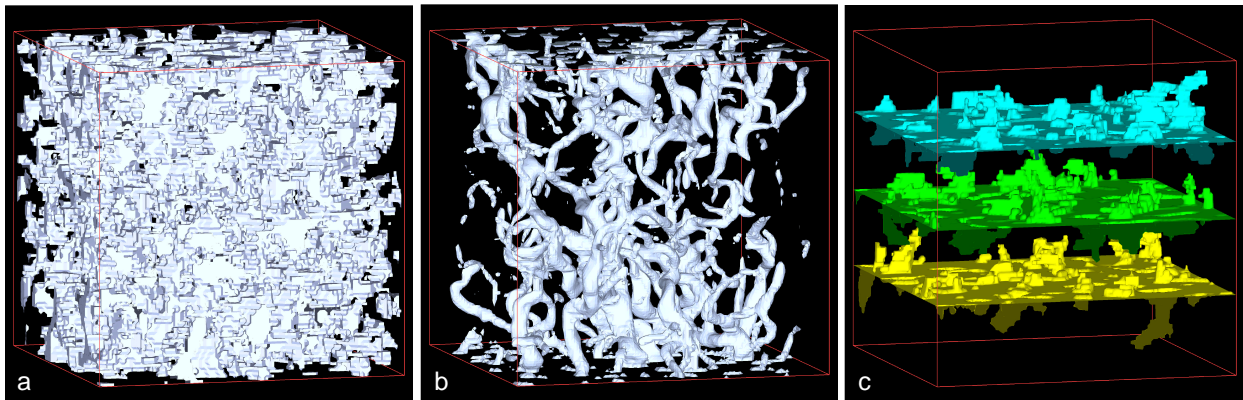


Figure 4: (a) Example of a reconstructed firn cube (12 mm x 12 mm x 12 mm) from 45 m depth with $n = 0.22$, pore space in white. (b) Simulated flow field forced by a vertical pressure gradient, in white the contour of the velocity isosurface with $v > (0.1v_{max})$ which indicates the dominant flow paths. (c) Simulated concentration field forced by a vertical concentration gradient. Three isosurfaces of different concentration are plotted.

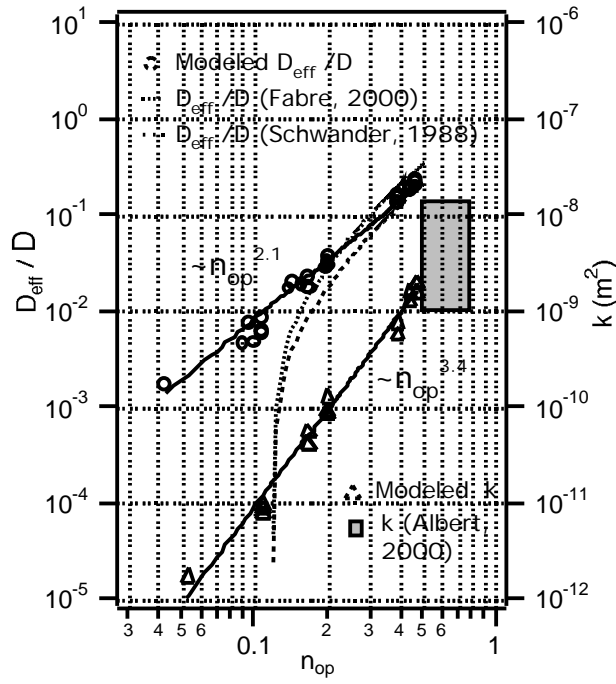


Figure 5: Modeled D_{eff}/D versus n_{op} - and k versus n_{op} -relationships in comparison to measured estimates.