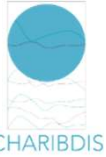


u^b

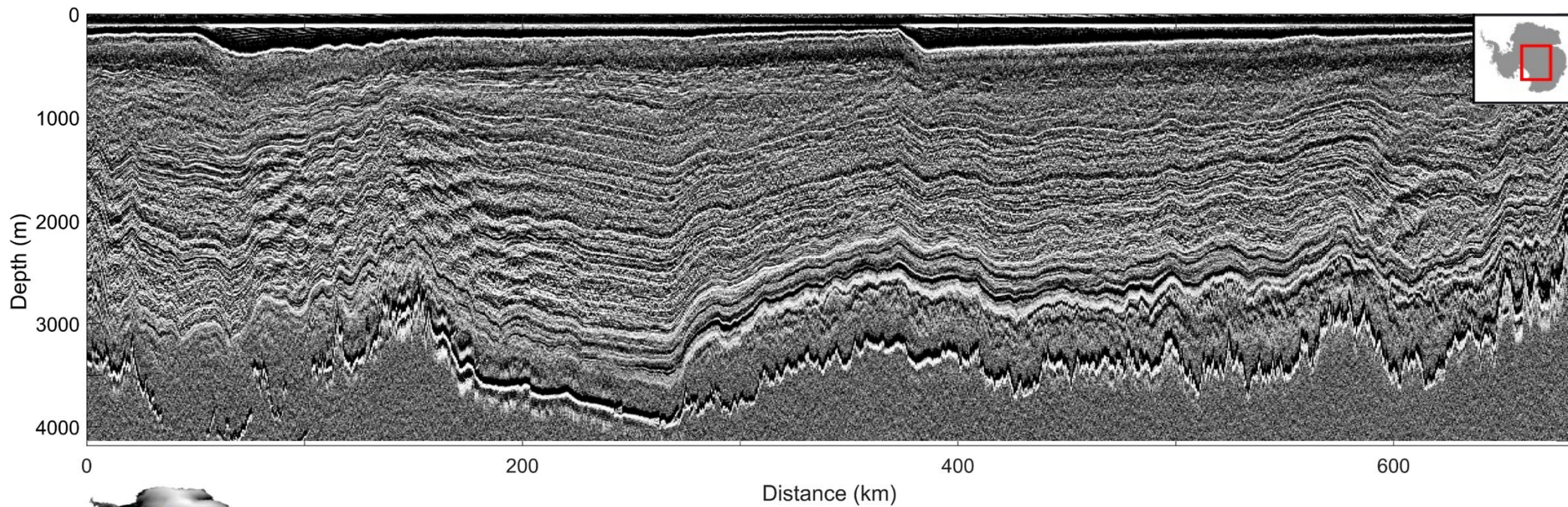
UNIVERSITÄT
BERN
OESCHGER CENTRE
CLIMATE CHANGE RESEARCH

Additional isochronal constraints in East Antarctica for input into 3D ice-sheet models

Bodart J.A.^{1,2}, Višnjević V.^{1,2}, Franke S.^{3,4}, Zhur A.M.³, Hermant A.^{1,2}, Eisen O.³, Sutter J.^{1,2}



¹ Climate and Environmental Physics, Physics Institute, University of Bern; ² Oeschger Centre for Climate Change Research, Switzerland;
³ Department of Geosciences, Tübingen University, Tübingen, Germany; ⁴ Alfred-Wegener-Institut Helmholtz-Zentrum für Polar- und Meeresforschung, Bremerhaven, Germany



Swiss National
Science Foundation

julien.bodart@unibe.ch