



# NOTES AND NEWS

## FIRST RECORD OF *ATELECYCLUS UNDECIMDENTATUS* (HERBST, 1783) (DECAPODA, BRACHYURA, ATELECYCLIDAE) ALONG THE DUTCH NORTH SEA COAST

BY

MAX WILLEMS<sup>1,3</sup>) and ANDREAS M. WASER<sup>2</sup>)

<sup>1</sup>) Marine Evolution and Ecology Group, Naturalis Biodiversity Center, Darwinweg 2, 2333 CR Leiden, The Netherlands

<sup>2</sup>) Wadden Sea Research Station Sylt, Alfred Wegener Institute, Helmholtz Centre for Polar and Marine Research, Hafenstraße 43, 25992 List, Germany

ORCID iDs: Willems: 0009-0003-6544-4673; Waser: 0000-0002-9455-4447

### INTRODUCTION AND METHODS

The genus *Atelecyclus* Leach, 1815 is represented by two extant species, *Atelecyclus rotundatus* (Olivi, 1792), which is known from the Mediterranean and the Atlantic, from South Africa to the Bay of Biscay (Barnard, 1950; Adema, 1991; d'Udekem d'Acoz, 1999; Salva & Feldmann, 2001), and *A. undecimdentatus* (Herbst, 1783), which inhabits the coastal East Atlantic Ocean, ranging from the English Channel southwards to West Africa (Forest, 1957; d'Udekem d'Acoz, 1999; Salva & Feldmann, 2001), with occasional sightings in the Mediterranean Sea (Forest, 1957). Members of the genus *Atelecyclus* can be easily distinguished from other genera in the superfamily Cancroidea Latreille, 1802 in Europe by the rounded, nearly circular carapace, which bears a dense fringe of setae on the margins. The frontal region of the carapace is toothed, and the antero-lateral teeth are well-developed. Distinguishing between the two *Atelecyclus* species primarily depends on carapace length to width ratio; the carapace of *A. rotundatus* is at most slightly wider than long (with an average length to width ratio of 0.98), while the carapace of *A. undecimdentatus* has an average ratio of 0.83 (Forest, 1957). Additionally, *A. rotundatus* has small, acute antero-lateral teeth, whereas *A. undecimdentatus* has more rounded ones. The antero-lateral teeth, however, can be highly variable amongst individuals, and often damaged on stranded animals (MW

---

<sup>3</sup>) Corresponding author; e-mail: max.willems@naturalis.nl

pers. obs.). Therefore, for adult animals, the length to width ratio is the primary characteristic to distinguish the two species (Forest, 1957; Salva & Feldmann, 2001).

During a survey of washed-up brachyurans in Noord-Holland, the Netherlands in 2021, one specimen of *A. undecimdentatus*, previously undocumented on the Dutch North Sea coast, was discovered by the first author. The discovery coincided with a severe storm that caused a mass stranding of numerous brachyuran species, such as *Corystes cassivelaunus* (Pennant, 1777) (Corystidae Samouelle, 1819), *Necora puber* (Linnaeus, 1767) (Polybiidae Ortman, 1893), *Polybius navigator* (Herbst, 1794) (Polybiidae) and *Pinnotheres pisum* (Linnaeus, 1767) (Pinnotheridae De Haan, 1833). Prior to this find, a few unverified citizen science records on the online platform Waarneming.nl (part of Observation.org) hinted at the presence of *A. undecimdentatus*, with the earliest record dating back to 2015 on the Dutch west coast (fig. 1). However, since the 2021 storm, there has been a significant increase in the number of recorded sightings, suggesting the species has established itself in the Dutch North Sea (Waarneming.nl, 2024).

Here, we present sightings of *A. undecimdentatus* along the Dutch North Sea coast and discuss their potential northward migration. Sightings primarily consist of specimens washed ashore, rarely alive. Additionally, three records of live specimens were obtained from approximately 20 meters depth in the North Sea during research cruises. All sightings were documented on Waarneming.nl and underwent rigorous verification and validation by the first author, with any dubious records or unusable photos being excluded. Of all sightings, 430 were verified and included in the map. Pictured specimens were collected in April 2021 on the Dutch west coast (fig. 1) for scientific documentation and were preserved in 70% ethanol. Measurements of maximum carapace width (CW) and carapace length at the midline (CL) are provided in millimetres. Photographs were taken using a Nikon D.610 camera with a 24/70 mm lens and edited using Adobe Photoshop 2023. Given synonymy is limited to references primarily from scientific papers and reports, and mostly includes contributions of distributional records new at the time of their publication. Preserved specimens have been added to the collection of Naturalis Biodiversity Center (RMNH) in Leiden, the Netherlands, with comparative material also sourced from the RMNH collection.

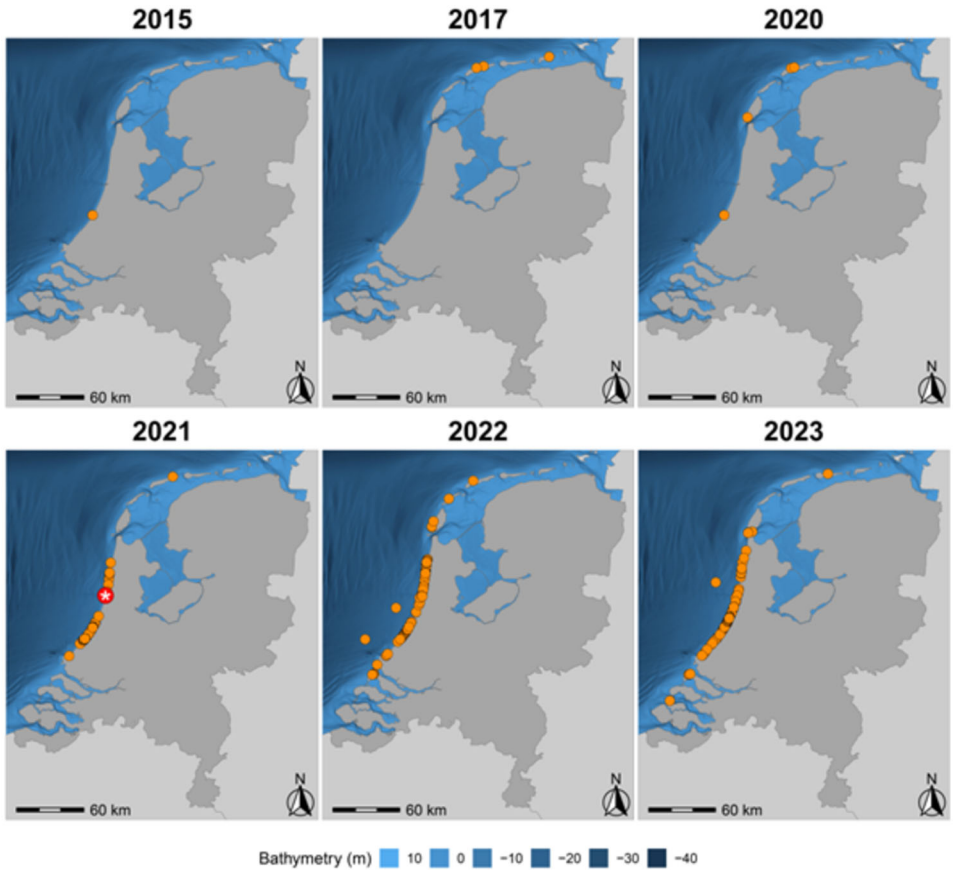


Fig. 1. Map of the Netherlands (highlighted in dark grey) and the adjacent North Sea, showing annual sightings of *Atelecyclus undecimdentatus* (Herbst, 1783) (filled orange circles) between 2015 and 2023 and the collection site of the examined specimen RMNH.CRUS.D.57976 (asterisk encircled in red). Data of sightings for *A. undecimdentatus* are gathered from Waarneming.nl, and bathymetric information is derived from the GEBCO 2023 GRID (GEBCO Compilation Group, 2023).

## RESULTS AND DISCUSSION

### Descriptive part

Family ATELECYCLIDAE Ortmann, 1893

Genus *Atelecyclus* Leach, 1814

***Atelecyclus undecimdentatus*** (Herbst, 1783)

(figs. 2-3)

*Cancer undecimdentatus* Herbst, 1783: 181, pl. 10, fig. 60.

*Cancer amoenus* Herbst, 1799: 64, pl. XLIX, fig. 3.

*Atelecyclus cruentatus* Desmarest, 1825: 89; Guérin-Ménéville, 1829: pl. 2, fig. 2; Heller, 1863: 132, pl. IV, fig. 5; Bolivar, 1892: 128 (list); A. Milne-Edwards & Bouvier, 1894: 51, pl. V, figs. 1-5;



Fig. 2. *Atelecyclus undecimdentatus* (Herbst, 1783); RMNH.CRUS.D.57976; CW = 37.0 mm, Velsen Noord, Noord-Holland, the Netherlands, 10 April 2021. Top figure, specimen in ventral view; bottom picture, same in dorsal view.



Fig. 3. *Atelecyclus undecimdentatus* (Herbst, 1783); RMNH.CRUS.D.57975; CW = 42.0 mm, Katwijk aan Zee, Zuid-Holland, the Netherlands, 11 April 2021. Specimen in dorsal view.

Pesta, 1918: 383, fig. 123; Balss, 1921: 55, fig. 7; Monod, 1933: 500, figs. 11A, 11B; Barnard, 1950: 198; Capart, 1951: 136.

*Atelecyclus omoiodon* Risso, 1827: 18.

*Atelecyclus rotundatus* — Miers, 1881: 220; Bonnier, 1887: 38; A. Milne-Edwards & Bouvier, 1900: 61; Rathbun, 1900: 292; Bouvier, 1940: 221, fig. 147, pl. 8, fig. 7; Zariquiey Álvarez, 1946: 149 (not *Atelecyclus rotundatus* (Olivi, 1792)).

*Atelecyclus septemdentatus* — Caullery, 1896: 403.

*Atelecyclus undecimdentatus* — Monod, 1956: 148, figs. 184-186; Forest, 1957: 469, fig. 1; Longhurst, 1958: 87; Forest & Gantès, 1960: 350; Nunes-Ruivo, 1961: 3 (list); Bourdon, 1965: 25; Maurin, 1968: 486, 489, fig. 4; Pastore, 1972: 112; Lagardère, 1973: 84 (in table); Anadón, 1981: 155 (in table); Manning & Holthuis, 1981: 69; García Raso, 1984: 107 (in table); d'Udekem d'Acoz, 1986: 5; García Socias & Gracia, 1988: 53; González-Gordillo et al., 1990: 420 (list); d'Udekem d'Acoz, 1999: 212; Salva & Feldmann, 2001: 49, fig. 28; Low & Ng, 2012: 85; Marco-Herrero et al., 2015: 246 (in table); Hayward & Ryland, 2017: 424, fig. 8.59b; García-de-Lomas et al., 2019: 5 (in table).

*Atelecyclus undecimdentatus* — Pastore, 1972: 108 (list).

Material examined.— RMNH.CRUS.D.57976: 1 female (37.0 × 31.0 mm), Velsen Noord, Noord-Holland, the Netherlands, 10 April 2021, washed ashore; leg. & det. M. Willems. — RMNH.CRUS.D.57975: 2 females (31.0 × 24.0 mm moult, 29.0 × 23.0 mm moult), 1 male (42.0 × 31.0 mm moult), Katwijk aan Zee, Zuid-Holland, the Netherlands, 11 April 2021, washed ashore; leg. & det. M. Scherrenberg.

Comparative material.— RMNH.CRUS.D.28025 (*Atelecyclus undecimdentatus*): 1 female (34.0 × 28.0 mm), Algarve, Troia, Rio Sado, Portugal, 29 April 1971, across Setubal; leg. excursion RMNH no. 2. — RMNH.CRUS.D.39927 (*Atelecyclus undecimdentatus*): 6 females (34.0 × 25.0 mm, 39.0 × 30.0 mm, 32.0 × 24.0 mm moult, 36.0 × 28.0 mm, 41.0 × 30.0 mm, 41.0 × 30.0 mm moult), 3 males (45.0 × 33.0 mm, 43.0 × 32.0 mm moult, 35.0 × 27.0 mm), 1 unknown (35.0 × 27.0 mm carapace only), Sta. MAU.106, Mauritania, off Banc d'Arguin, 20°31'N 17°02'W, depth 15 m, shell gravel, many small bivalves, Branchiostoma, crabs (*Atelecyclus*), polychaetes, Van Veen grab (4×), 19 June 1988, det. C.H.J.M. Fransen.

### Remarks

The specimen and moults found match with the original description and figures by Herbst (1783), as well as with the examined comparative material. The carapace is broader than long (length to width ratio between 0.73-0.83) and slightly granulated (fig. 3). The carapace regions are slightly defined by shallow grooves, only the gastric and cardiac regions are clearly defined (fig. 3). The front holds three rostral teeth, two fissures are present in each orbit (fig. 3). The antero-lateral margins of the carapace bear 10 teeth, granulated and of unequal sizes (figs. 2-3). The postero-lateral margins on the carapace are thickened and granulated. The ventral side of the carapace is covered in light brown setae, which are visible in dorsal view (fig. 3). The pleon is long and narrow on both sexes. The chelipeds are short and broad. The front of the merus is covered with rows of granules. The top of the propodus possesses a few sharp spines and a row of thick setae. The colour of the dactylus and the immovable finger of the propodus are noticeably darker (fig. 2). The ambulatory legs are covered in long setae and the dactylus ends in a brown, sharp point. The colour of freshly stranded specimens is white to brown, with areas of light red to pink.

Increased sightings of *A. undecimdentatus* along the Dutch North Sea coast suggest the expansion into more northern waters beyond its original range. This shift may be driven by increasing North Atlantic water temperatures, which have risen by about 0.3°C per decade over the last decades (Dye et al., 2013; Amorim et al., 2023). Rising sea water temperatures have been linked to changing benthic communities (Emeis et al., 2015). For example, the angular crab, *Goneplax rhomboides* (Linnaeus, 1758) (Goneplacidae MacLeay, 1839), originally known from warmer Eastern Atlantic waters and the Mediterranean Sea, has been increasingly documented in the southern North Sea since 2000 (Neumann et al., 2013). However, the ecological implications of these northward migrations remain uncertain and warrant further investigation, particularly regarding potential impacts on food availability and habitat competition.

Knowledge on stranding of invertebrates on the Dutch coast of the North Sea is limited. Most existing knowledge relies on citizen science records, which has some limitations. Charismatic or bigger organisms will be reported more often

than small or seemingly common organisms. The quality of the data depends on the experience of the observers and validators on these platforms. Nevertheless, these observations can be valuable indicators of range expansion of crabs and other organisms.

#### ACKNOWLEDGEMENTS

We express our thanks to Charles Franssen and Lotte Vroomans of Naturalis Biodiversity Center, Leiden, for their valuable comments on the manuscript. We also deeply appreciate the comments of Peter Ng and an anonymous reviewer, whose valuable feedback has greatly contributed to the improvement of the manuscript. Thanks to the users of Waarneming.nl who reported sightings of the horse crabs.

#### REFERENCES

- ADEMA, J. P. H. M., 1991. Krabben van Nederland en België: 1-244. (Nationaal Natuurhistorisch Museum, Leiden).
- AMORIM, F. D. L. L. D., K. H. WILTSHIRE, P. LEMKE, K. CARSTENS, S. PETERS, J. RICK, L. GIMENEZ & M. SCHARFE, 2023. Investigation of marine temperature changes across temporal and spatial gradients: Providing a fundament for studies on the effects of warming on marine ecosystem function and biodiversity. *Progress in Oceanography*, **216**: 103080. DOI:10.1016/j.pocean.2023.103080.
- ANADÓN, R., 1981. Crustáceos Decápodos recogidos durante la campaña “Atlor VII” en las costas noroccidentales de Africa (Noviembre 1975). *Resultados Expediciones Científicas*, **9**: 151-159.
- BALSS, H., 1921. Crustacea VI: Decapoda Anomura (Paguridea) und Brachyura (Dromiacea bis Brachygnatha). In: W. MICHAELSEN (ed.), *Beiträge zur Kenntnis der Meeresfauna Westafrikas*. Band III, Lieferung **2**: 37-67. (L. Friederichsen & Co, Hamburg).
- BARNARD, K. H., 1950. Descriptive catalogue of South African decapod Crustacea (crabs and shrimps). *Annals of the South African Museum*, **38**: 1-837.
- BOLIVAR, J., 1892. Lista de la colección de crustáceos de España y Portugal del Museo de Historia Natural de Madrid. *Actas de la Sociedad Española de Historia Natural*, **21**: 124-141.
- BONNIER, J., 1887. Catalogue des Crustacés Malacostracés recueillis dans la Baie de Concarneau: 1-190. (Octave Dion, Paris).
- BOURDON, R., 1965. Inventaire de la faune marine de Roscoff. *Décapodes-Stomatopodes*: 1-45. (Edition de la Station Biologique de Roscoff, Roscoff).
- BOUVIER, E. L., 1940. *Décapodes Marcheurs*. Faune de France, **37**: 1-404. (Lechevalier, Paris).
- CAPART, A., 1951. Crustacés Décapodes Brachyures. *Expédition océanographique Belge dans les eaux côtières africaines de l’Atlantique sud (1948-1949)*, **3**: 13-205.
- CAULLERY, M., 1896. Crustacés Schizopodes et Décapodes. In: R. KOEHLER (ed.), *Résultats Scientifiques de la Campagne du “Caudan” dans le Golfe de Gascogne, Aout-Septembre, 1895*: 365-419. (Annales de l’Université de Lyon, Lyon).
- DESMAREST, A. G., 1825. *Considerations générales sur la classe des Crustacés, et description des espèces de ces animaux qui vivent dans la mer, sur les cotes ou dans les eaux douces de la France*: 1-446. (Levrault, Paris).

- DYE, S. R., S. L. HUGHES, J. TINKER, D. I. BERRY, N. P. HOLLIDAY & C. ELIZABETH, 2013. Impacts of climate change on temperature (air and sea). *MCCIP Science Review*: 1-12. DOI:10.14465/2013.arc01.001-012.
- EMEIS, K.-C., J. VAN BEUSEKOM, U. CALLIES, R. EBINGHAUS, A. KANNEN, G. KRAUS, I. KRÖNCKE, H. LENHART, I. LORKOWSKI, V. MATTHIAS, C. MÖLLMANN, J. PÄTSCH, M. SCHARFE, H. THOMAS, R. WEISSE & E. ZORITA, 2015. The North Sea — A shelf sea in the Anthropocene. *Journal of Marine Systems*, **141**: 18-33. DOI:10.1016/j.jmarsys.2014.03.012.
- FOREST, J., 1957. Sur la validité et le nom des deux espèces d'*Atelecyclus* (Crustacea Decapoda Brachyura). *Bulletin du Muséum National d'Histoire Naturelle*, **39**: 469-474.
- FOREST, J. & H. GANTÈS, 1960. Sur une collection de Crustacés Décapodes marcheurs du Maroc. *Bulletin du Muséum National d'Histoire Naturelle*, 2e Série, **32**: 346-358.
- GARCÍA-DE-LOMAS, J., A. PAYO, J. A. CUESTA & D. MACÍAS, 2019. Morphodynamic study of a 2018 mass-stranding event at Punta Umbria beach (Spain): Effect of Atlantic storm Emma on benthic marine organisms. *Journal of Marine Science and Engineering*, **7**(10): 344. DOI:10.3390/jmse7100344.
- GARCÍA RASO, J. E., 1984. Brachyura of the coast of southern Spain (Crustacea, Decapoda). *Spixiana*, **7**: 105-113.
- GARCÍA SOCIAS, L. L. & F. GRACIA, 1988. Nuevas aportaciones a la fauna de Crustacea Decapoda de las Islas Baleares. *Bolletí de la Societat d'Historia Natural des Illes Balears*, **32**: 47-56.
- GEBCO COMPILATION GROUP, 2023. GEBCO 2023 Grid. DOI:10.5285/f98b053b-0cbc-6c23-e053-6c86abc0af7b.
- GONZÁLEZ-GORDILLO, J. I., J. A. CUESTA MARISCAL & F. PABLOS, 1990. Adiciones al conocimiento de los Crustáceos Decápodos de las zonas mediolitoral e infralitoral de las costas suratlánticas andaluzas (Suroeste España). I Brachyura. *Cahiers de Biologie Marine*, **31**: 417-429.
- GUÉRIN-MÉNEVILLE, F.-É., 1829. *Iconographie du règne animal de G. Cuvier, ou, Représentation d'après nature de l'une des espèces les plus et souvent non encore figurées de chaque genre d'animaux: avec un texte descriptif mis au courant de la science: ouvrage pouvant servir d'atlas a tous les traites de zoologie.* (Chez J.B. Baillière, Paris).
- HAYWARD, P. J. & J. S. RYLAND, 2017. *Handbook of the Marine Fauna of North-West Europe* (2<sup>nd</sup> ed.): 1-785. (Oxford University Press, Oxford).
- HELLER, C., 1863. Die Crustaceen des südlichen Europa. *Crustacea Podophthalmia*. Mit einer Übersicht über die horizontale Verbreitung sämtlicher europäischer Arten: 1-336. (Wilhelm Braumüller, Vienna).
- HERBST, J. F. W., 1782-1790. *Versuch einer Naturgeschichte der Krabben und Krebse nebst einer systematischen Beschreibung ihrer verschiedenen Arten*. Erster Band. Mit XXI Kupfer-Tafeln und Register. Krabben: 1-274. (Joh. Casper Fuessly, Zürich; Gottlieb August Lange, Berlin).
- HERBST, J. F. W., 1799-1804. *Versuch einer Naturgeschichte der Krabben und Krebse nebst einer systematischen Beschreibung ihrer verschiedenen Arten*. Dritter Band: 1-50. (Joh. Casper Fuessly, Zürich; Gottlieb August Lange, Berlin).
- LAGARDÈRE, J.-P., 1973. Distribution des Décapodes dans le Sud du Golfe de Gascogne. *Revue des Travaux de l'Institut des Pêches Maritimes*, **37**: 77-95.
- LONGHURST, A. R., 1958. An ecological survey of the west African marine benthos. *Colonial Office Fishery Publications*, **11**: 1-102.
- LOW, M. & P. NG, 2012. *Cancer amoenus* Herbst, 1799: a junior subjective synonym of *Atelecyclus undecimdentatus* (Herbst, 1783) (Crustacea: Decapoda: Brachyura: Atelecyclidae). *Zootaxa*, **3492**: 85-88. DOI:10.11646/zootaxa.3492.1.6.
- MANNING, R. B. & L. B. HOLTHUIS, 1981. West African Brachyuran Crabs (Crustacea: Decapoda). *Smithsonian Contributions to Zoology*, **306**: 1-379.



- MARCO-HERRERO, E., P. ABELLÓ, P. DRAKE, J. E. GARCÍA-RASO, J. I. GONZÁLEZ-GORDILLO, G. GUERAO, F. PALERO & J. A. CUESTA, 2015. Annotated checklist of brachyuran crabs (Crustacea: Decapoda) of the Iberian Peninsula (SW Europe). *Scientia Marina*, **79**: 243-256. DOI:10.3989/scimar.04161.27A.
- MAURIN, C., 1968. Les crustacés capturés par la “Thalassa” au large des côtes nord-ouest africaines. *Revue Roumaine de Biologie (Série de Zoologie)*, **13**: 479-493.
- MIERS, E. J., 1881. On a collection of Crustacea made by Baron Hermann-Maltzan at Goree island, Senegambia. *Annals and Magazine of Natural History*, **5**: 204-377.
- MILNE-EDWARDS, A. & E.-L. BOUVIER, 1894. Crustacés décapodes provenant des campagnes du yacht l’Hirondelle (1886, 1887, 1888). I. Brachyures et Anomoures. Résultats des Campagnes Scientifiques accomplies sur son Yacht par Albert Ier Prince Souverain de Monaco: 3-112. (Imprimerie de Monaco, Monte Carlo).
- MILNE-EDWARDS, A. & E.-L. BOUVIER, 1900. Crustacés Décapodes. Première partie. Brachyures et Anomoures. Expéditions Scientifiques du Travailleur et du Talisman Pendant les Années 1880, 1881, 1882, 1883, 1883, **5**(1): 1-396.
- MONOD, T., 1933. Sur quelques Crustacés de l’Afrique occidentale (liste des Décapodes Mauritanien et des Xanthidés ouest-Africains). *Bulletin du Comité d’Études Historiques et Scientifiques de l’Afrique Occidentale Française*, **15**: 456-548.
- MONOD, T., 1956. Hippidea et Brachyura Ouest-Africains. In: *Mémoires de l’Institut Français d’Afrique Noire (IFAN)*, **45**: 1-674.
- NEUMANN, H., I. DE BOOIS, I. KRÖNCKE & H. REISS, 2013. Climate change facilitated range expansion of the non-native angular crab *Goneplax rhomboides* into the North Sea. *Marine Ecology Progress Series*, **484**: 143-153. DOI:10.3354/meps10299.
- NUNES-RUIVO, L., 1961. Crustacea Decapoda (I-Galatheidea et Brachyura). In: *Résultats scientifiques de la Campagne du N.R.P. “Faial” dans les eaux cotières du Portugal (1957)*, **4**: 1-36.
- PASTORE, M., 1972. Decapoda Crustacea in the Gulf of Taranto and the Gulf of Catania with a discussion of a new species of Dromiidae (Decapoda Brachyura) in the Mediterranean Sea. *Thalassia Jugoslavica*, **8**: 105-117.
- PESTA, O., 1918. Die Dekapodenfauna Der Adria. Versuch Einer Monographie: 1-300. (Franz Deutike, Leipzig).
- RATHBUN, M. J., 1900. The decapod crustaceans of West Africa. *Proceedings of the United States National Museum*, **22**: 271-316.
- RISSO, A., 1827. Histoire naturelle des principales productions de l’Europe Méridionale et particulièrement de celles des environs de Nice et des Alpes Maritimes. Tome V, Crustacés. Myriapodes, scorpionides, arachnides et acarides. Insectes. Vers intestinaux. Radiaires. Zoophytes: 1-403. (F.-G. Levrault, Paris).
- SALVA, E. W. & R. FELDMANN, 2001. Reevaluation of the family Atelecyclidae (Decapoda: Brachyura). *Kirtlandia*, **52**: 9-62.
- UDEKEM D’ACQZ, C. D’., 1986. Etude d’une collection de Crustacés Décapodes de Bretagne. *De Strandvlo*, **6**: 1-14.
- UDEKEM D’ACQZ, C. D’., 1999. Inventaire et distribution des crustacés décapodes de l’Atlantique nord-oriental, de la Méditerranée et des eaux continentales adjacentes au nord de 25°N. *Muséum National d’Histoire Naturelle/Service du Patrimoine Naturel, Collection Patrimoines Naturels*, **40**: 1-383.
- WAARNEMING.NL, 2024. Ovaalronde krab — *Atelecyclus undecimdentatus*. Available online at <https://waarneming.nl/species/789057/> (accessed 9 February 2024).
- ZARIQUIEY ÁLVAREZ, R., 1946. Crustáceos Decápodos Mediterráneos. Manual para la clasificación de las especies que pueden capturarse en las costas Mediterráneas Españolas: 1-183. (Instituto Español de Estudios Mediterráneos, Barcelona).

First received 17 April 2024.

Final version accepted 19 June 2024.

Published online 15 January 2025.