

Looking underneath an invasive macroalgae:

Benthic assemblages associated to *Mastocarpus stellatus* in human-made structures

Luis Giménez, Katharina Reichert, Karin Boos, Lars Gutow

Biologische Anstalt Helgoland, Alfred Wegener Institute for Polar and Marine Research, 27498 Helgoland - Germany

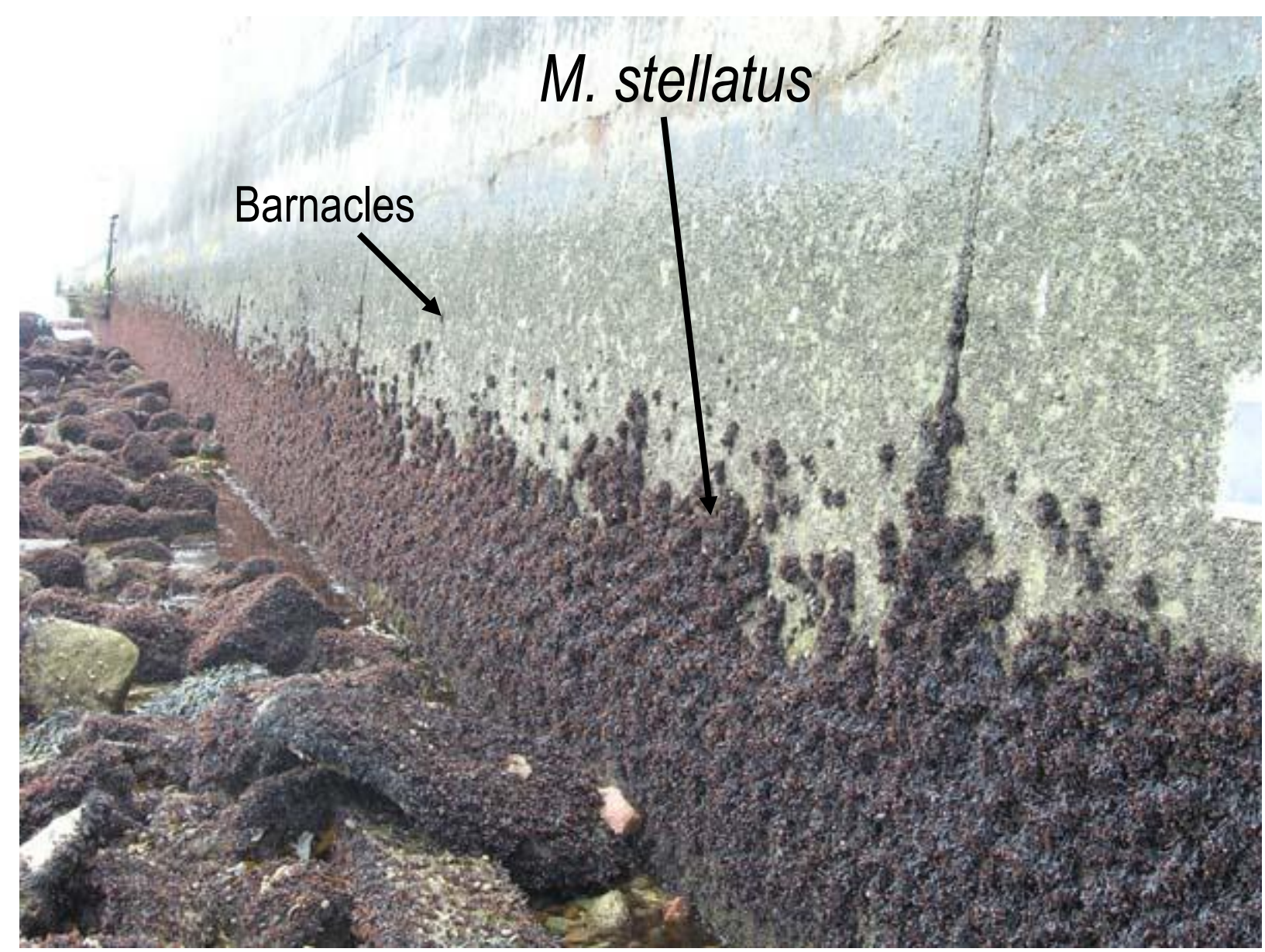
What are the potential roles of *M. stellatus* in the benthic community?

Methods

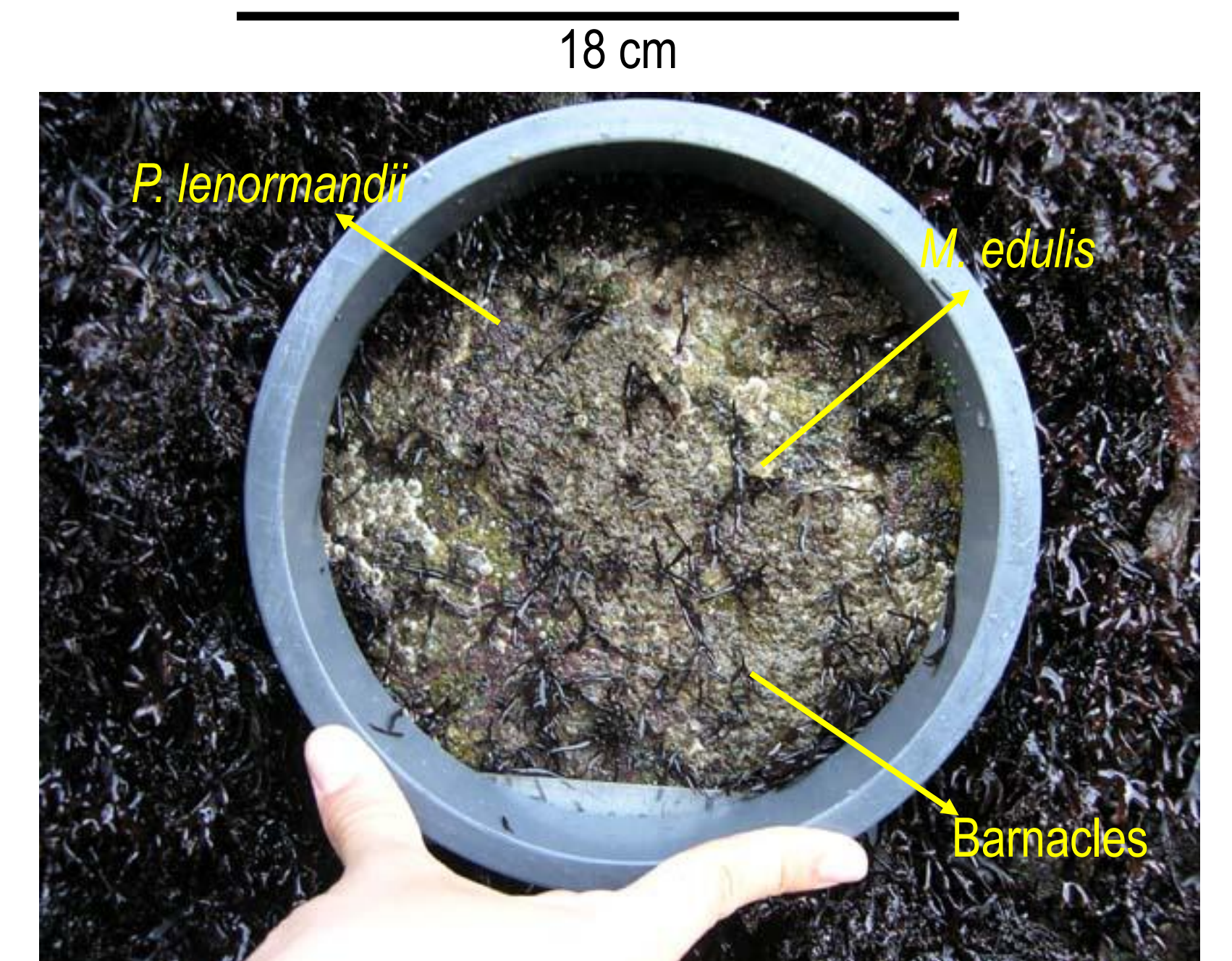
Study site:
Helgoland, German Bight, (North Sea)



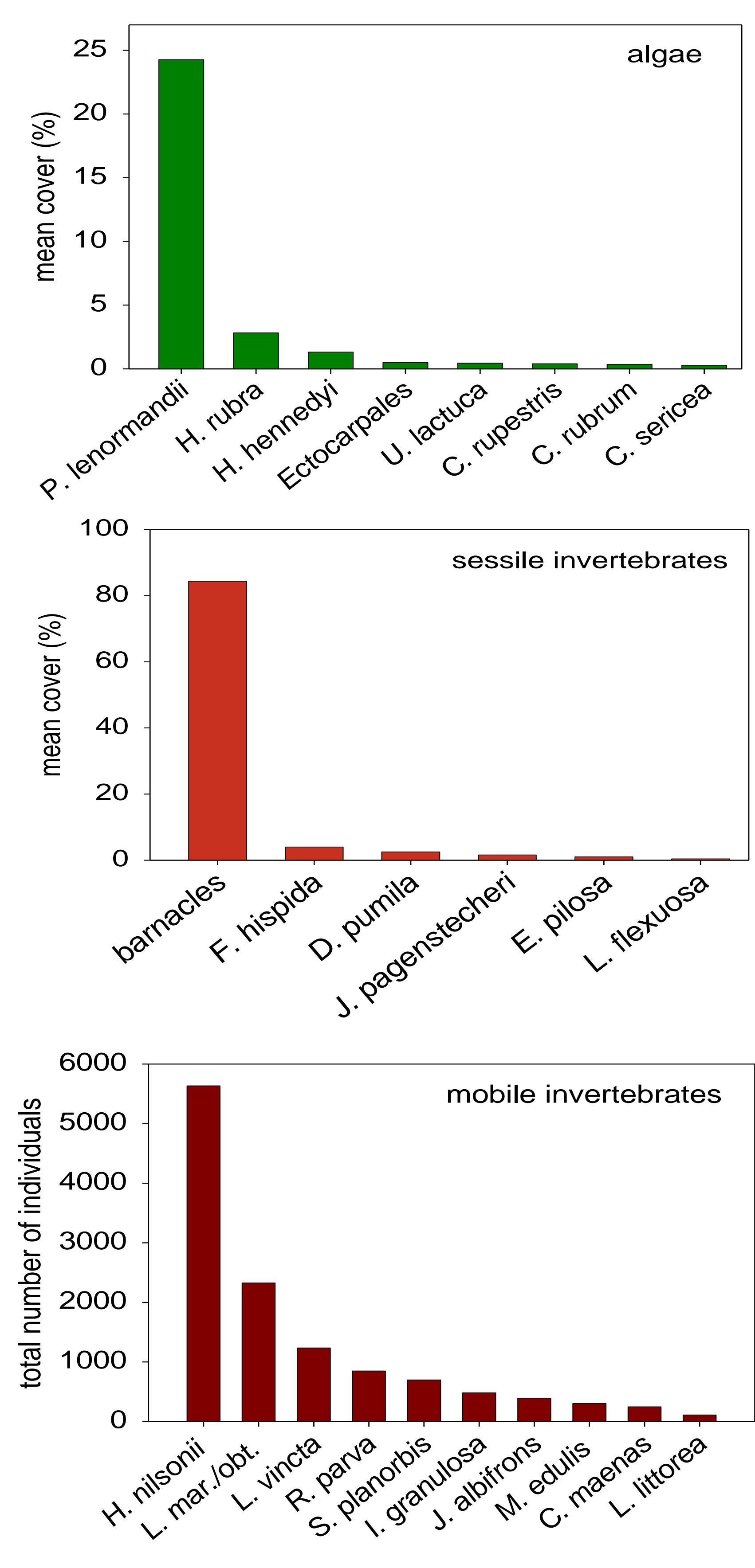
Sampling:
Harbor wall: 3 samples at random in 10 occasions (June-August)



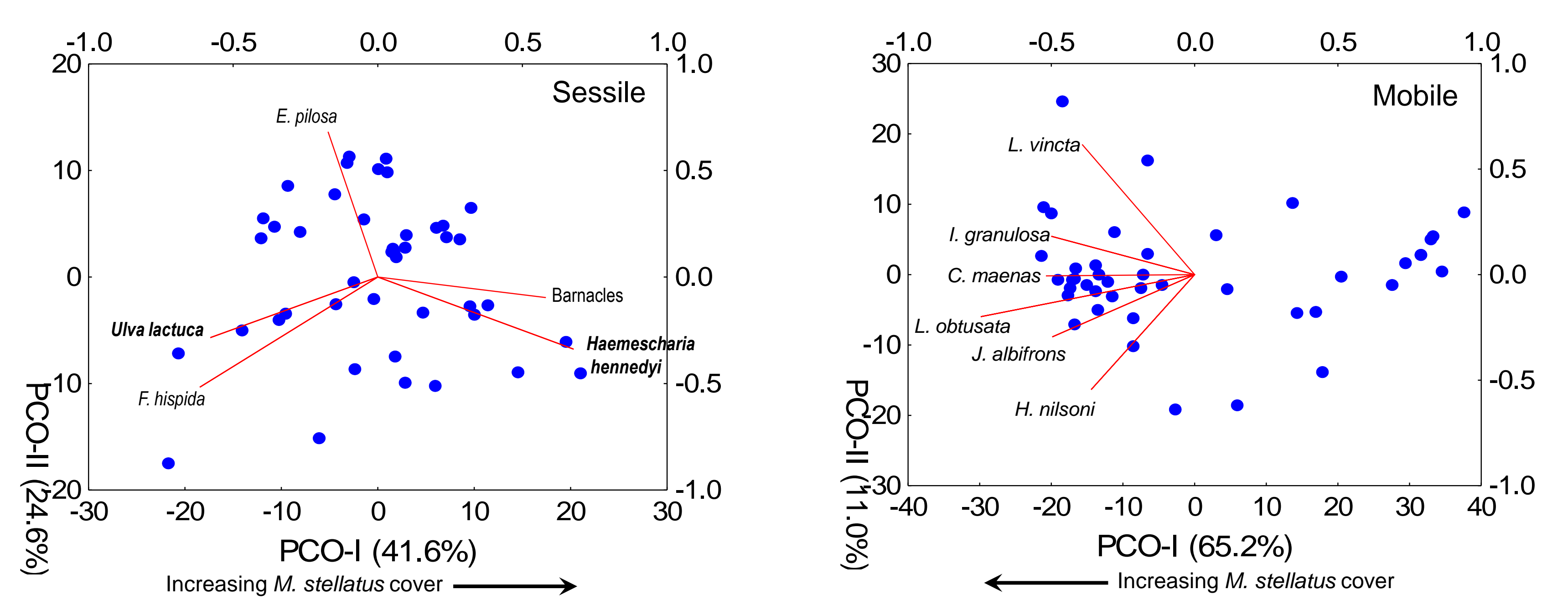
Cutting *M. stellatus* stands and looking underneath



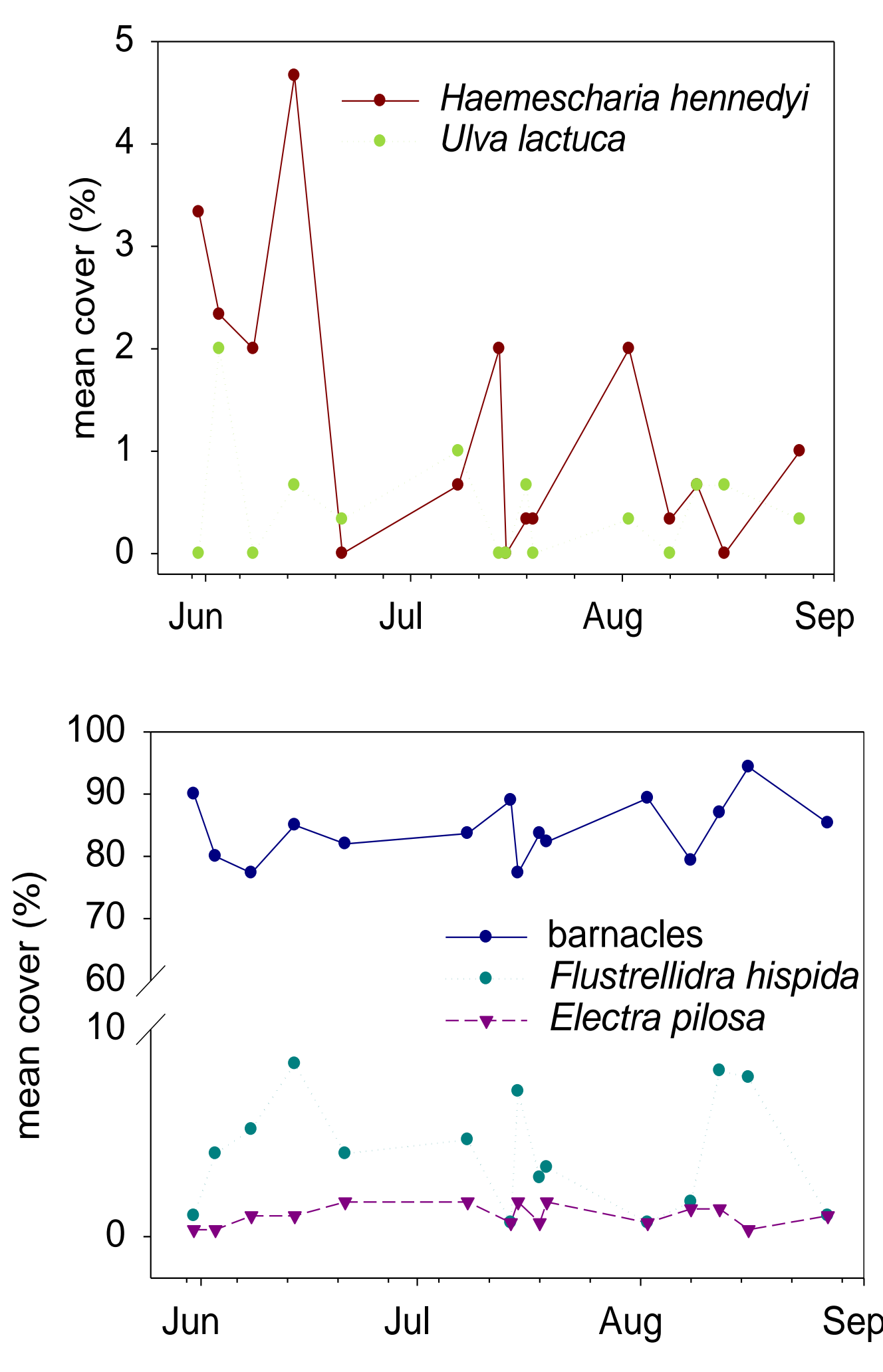
Species abundance



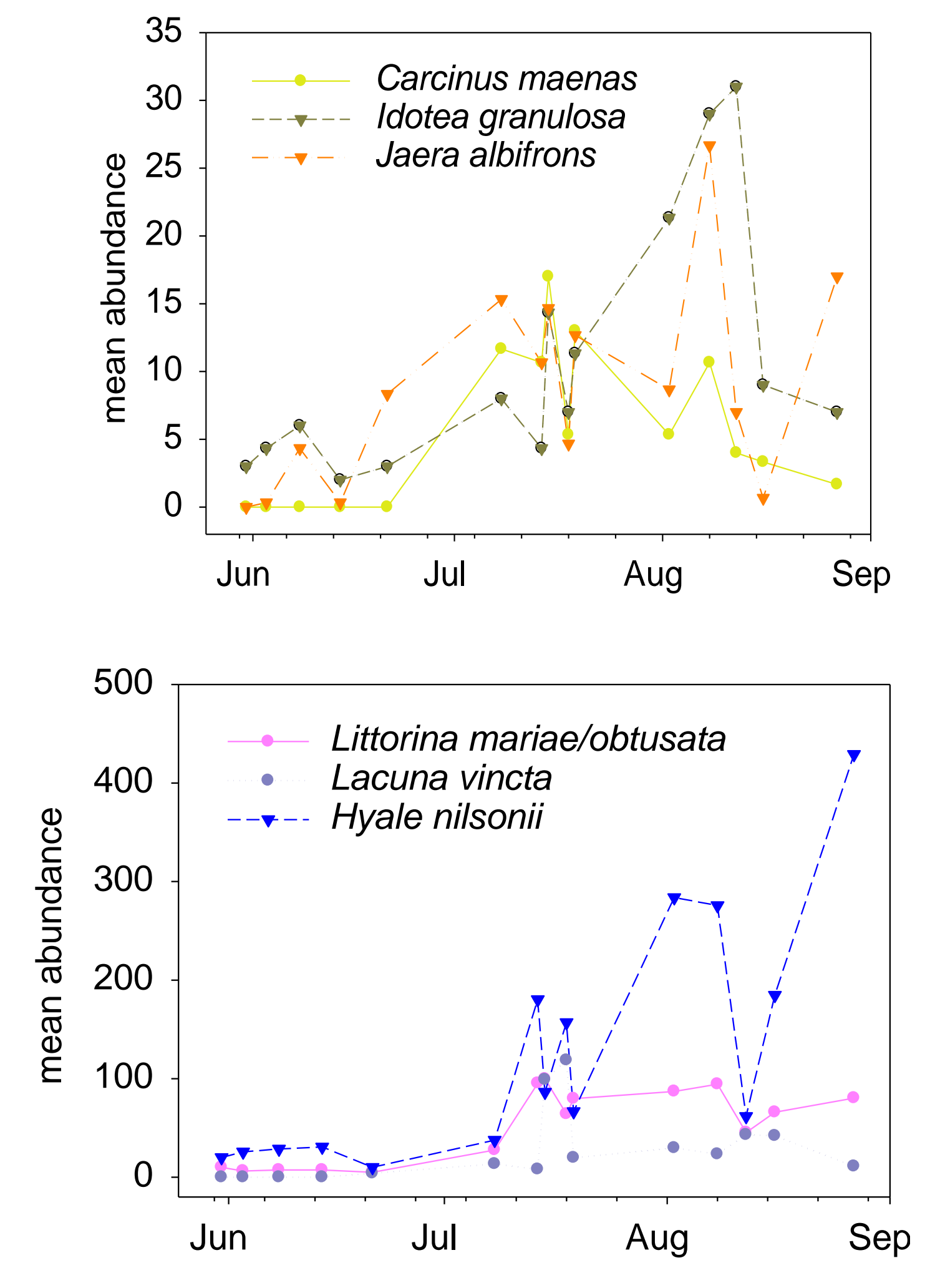
Community structure



Sessile species: habitat partitioning



Mobile species: positive covariation



Potential effects of *M. stellatus* after its incidental introduction to Helgoland in the 1980s

- Lack of strong negative effect on barnacles: no competitive exclusion
- Positive effect on settlement and recruitment of shore crab *C. maenas* and mussel *M. edulis*
- Positive effects on guilds of peracarid crustaceans and gastropods (shelter and food)

