

# CryoVEx11 GrandTour

## Final Meeting

Veit Helm, AWI

- Status of processing and deliverables
- CR analysis
- Runway calibration
- Summary/Remarks

# Processing overview

- Data received from DTU: 9<sup>th</sup> Aug. 2011
- Total amount of data: 1.2 Tb
- Processing status: Delivered in Nov. 2011(proc. version ASIRAS\_04\_03)
- Problems: all solved
- Runway Calibration: possible – ALS data received from DTU in Nov. 2011
- Final Report: AWI contribution delivered to ESA/DTU in Nov. 2011

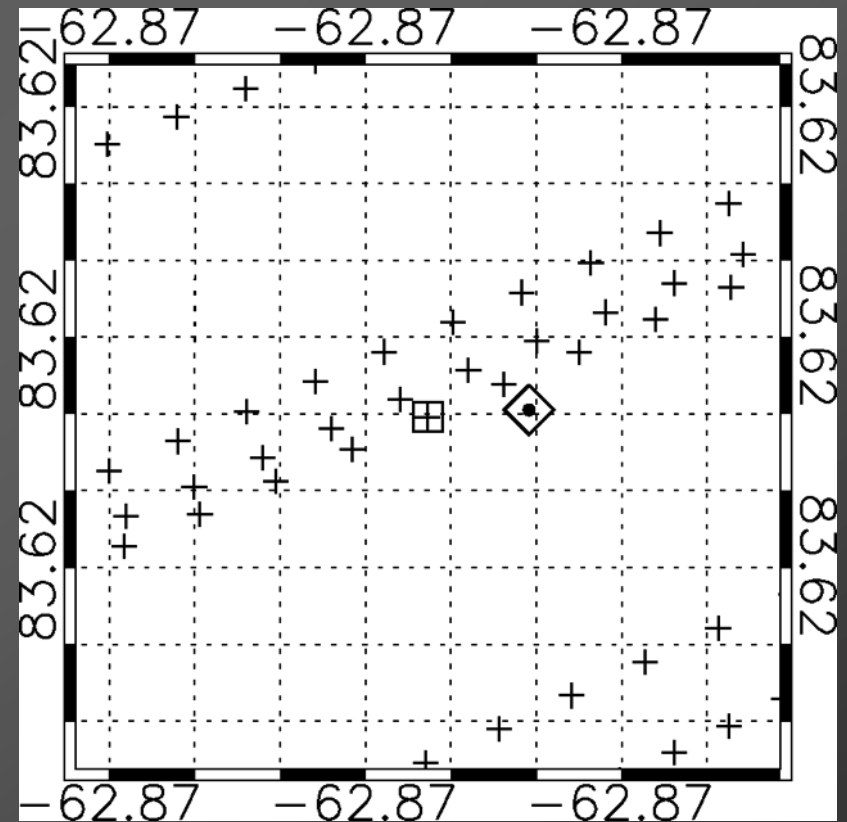
Table shows all succesful CR overpasses including time shifts

Note: none of the Austfonna CR were hit

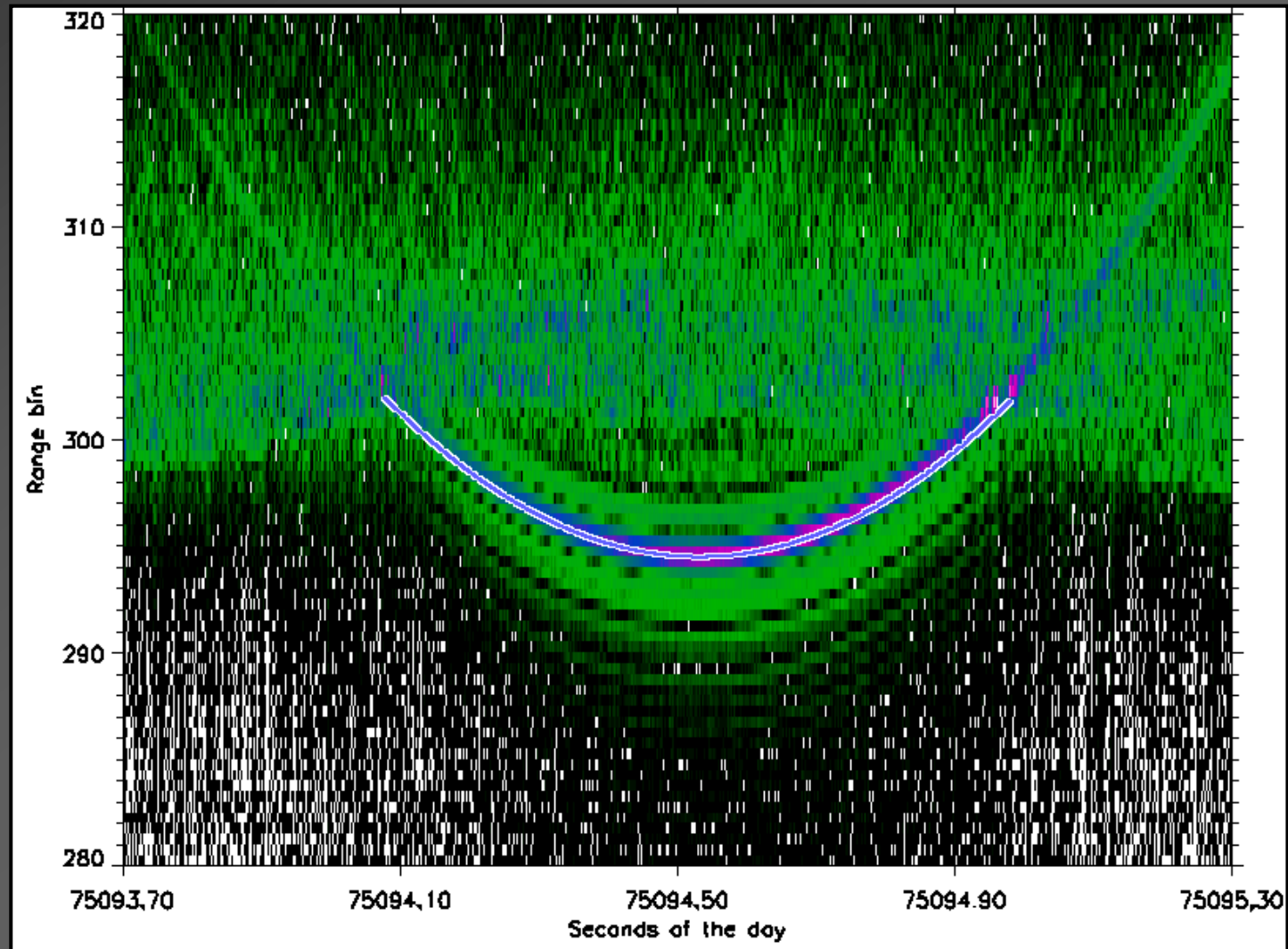
CR	Profile	Closest approach	Time	Time shift
11EGIG	A110509_01	3.51	47642.13	0.02
11EGIG	A110509_01	0.99	48548.34	0.02
11EGIG	A110509_02	3.75	49288.20	-0.05
11CRW	A110415_01	7.17	75086.94	0.16
11CRW	A110415_01	7.31	75592.69	-0.15
11CRE	A110415_01	2.38	75094.61	-0.07
11DEV1	A110507_01	9.57	63822.00	-0.02
11DEV2	A110507_01	2.82	63750.43	-0.03
11DEV3	A110507_01	4.56	67769.50	-0.01
11DEV4	A110507_01	5.12	63822.41	-0.02
11DEV4	A110507_01	1.11	66048.76	0.02

# CR Analysis

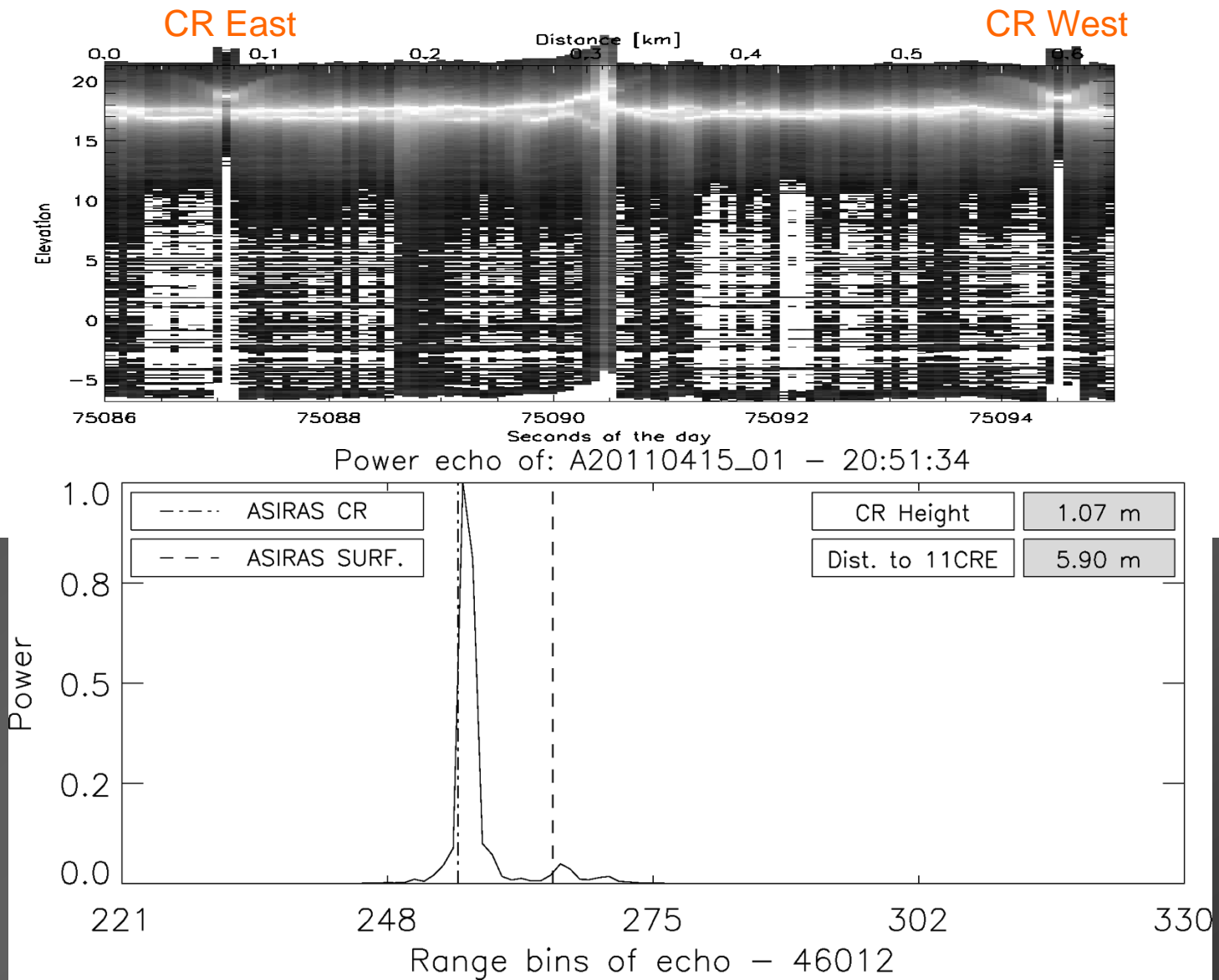
- Profile: A110415\_01
- CR East: 83.6196 -62.872033
- CR West: 83.618 -62.908
- Positions ca. 4h after flight measured from Field party
- Both CR were hit several times



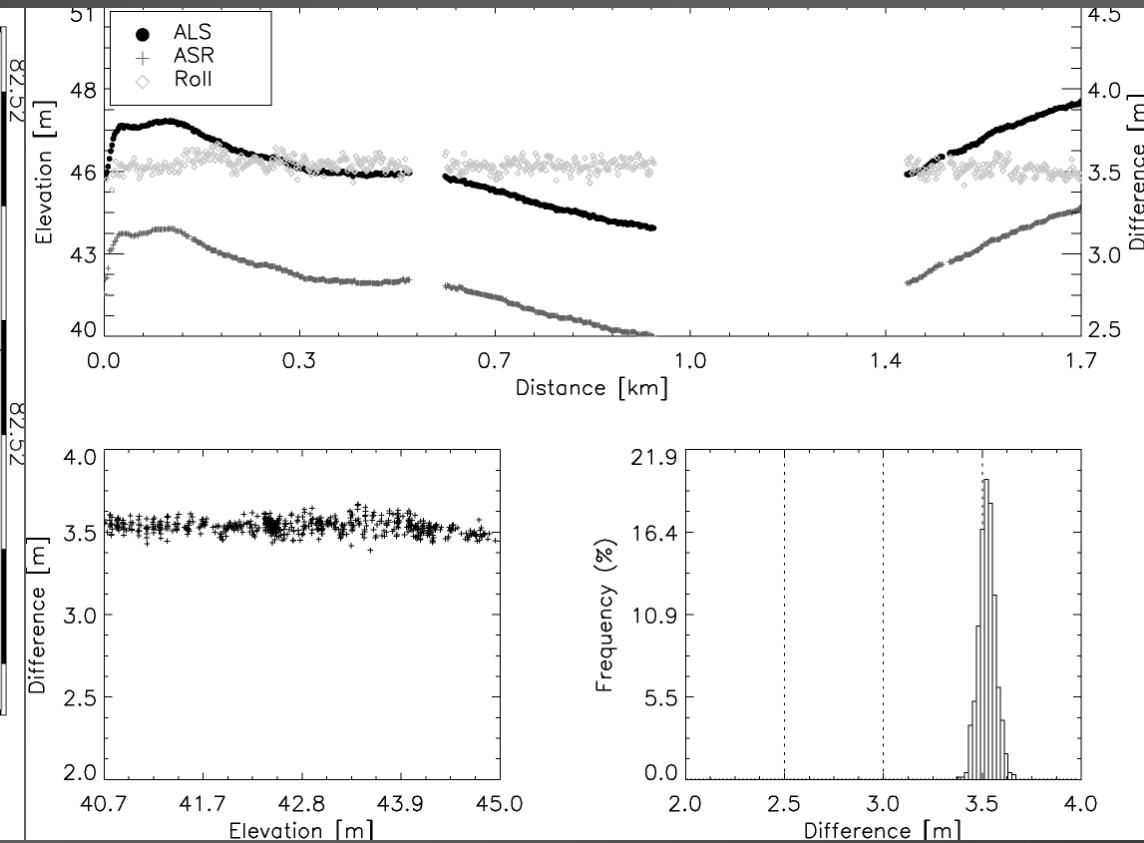
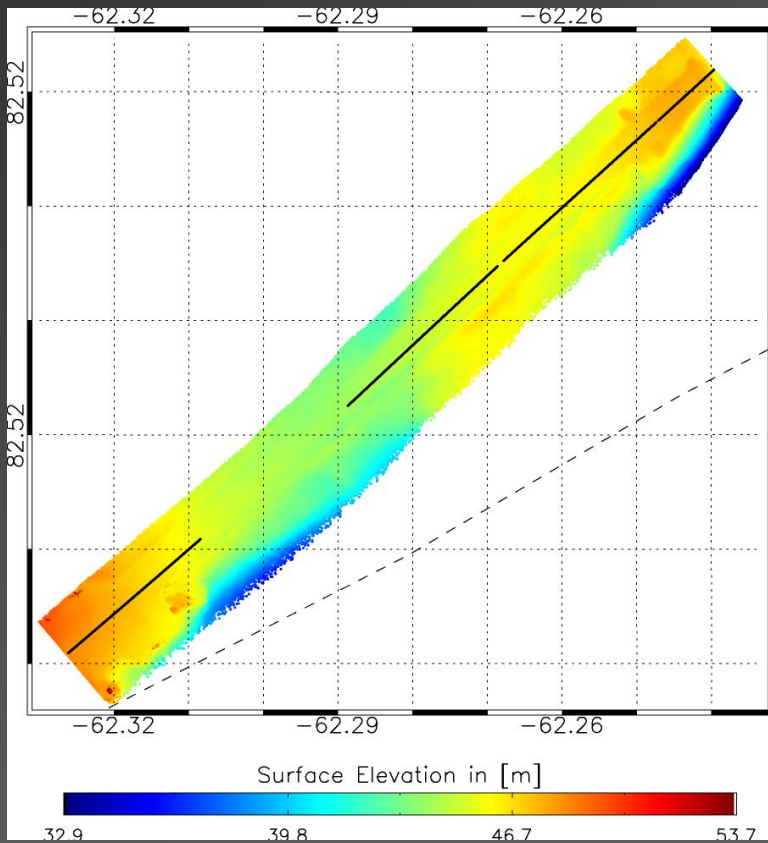
Best fit of simulated hyperbola to raw data



# CR Analysis



# Runway Analysis



Profile	Start time	Stop time	Time shift (s)	Offset (m)	Stddev (m)	ALS qual.	ASIRAS qual.
A110417_01	69905	69935	0.00	3.53	0.04	Good	Good



- AWI processed L1B product as requested by ESA  
(Processor version ASIRAS\_04\_02/03)
- ASIRAS Data delivered in Nov. 2011 to ESA
- Runway calibration possible (only one overpass)
- CR pass successful