

# Biofouling and fish at offshore wind power foundations - German Bight

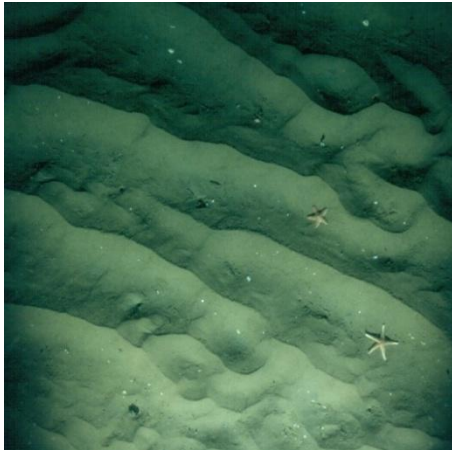
Roland Krone, Alexander Schröder, Lars Gutow & Jennifer Dannheim

Alfred-Wegener-Institute for Polar and Marine Research

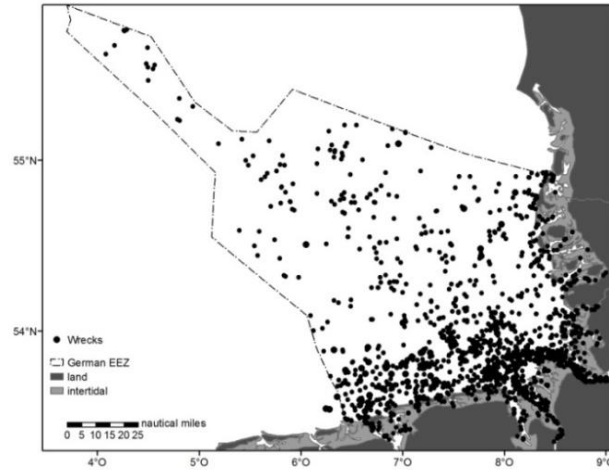
**Key words:** Mytilus, German Bight, New shallow water stepping stones, Large vagile demersal megafauna, *Cancer pagurus*, Ship wreck biocenoses, Scientific offshore diving, Biofouling, Fish,



# The German Bight



Dominated by soft  
bottom biocenoses



Influenced by  
**unknown biocenoses**  
of  
**1,300 ship wrecks**



More than 5,000 new  
habitats and  
**new biocenoses?**

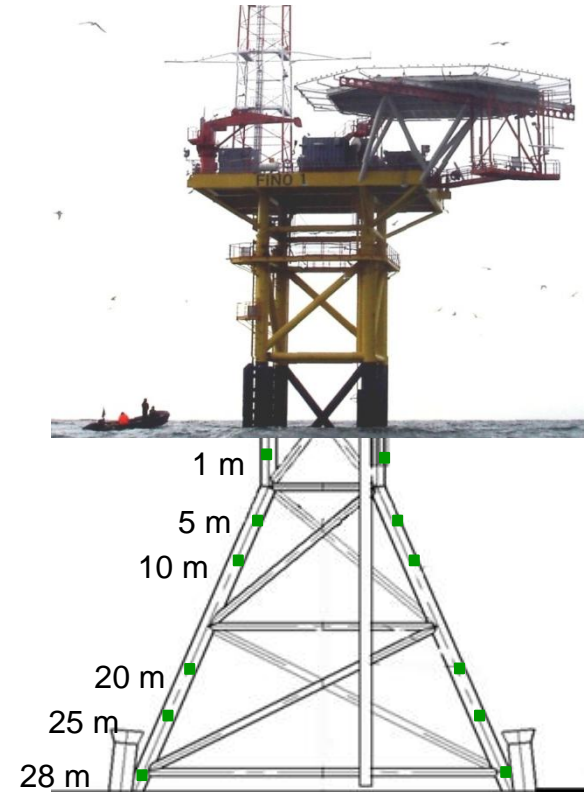
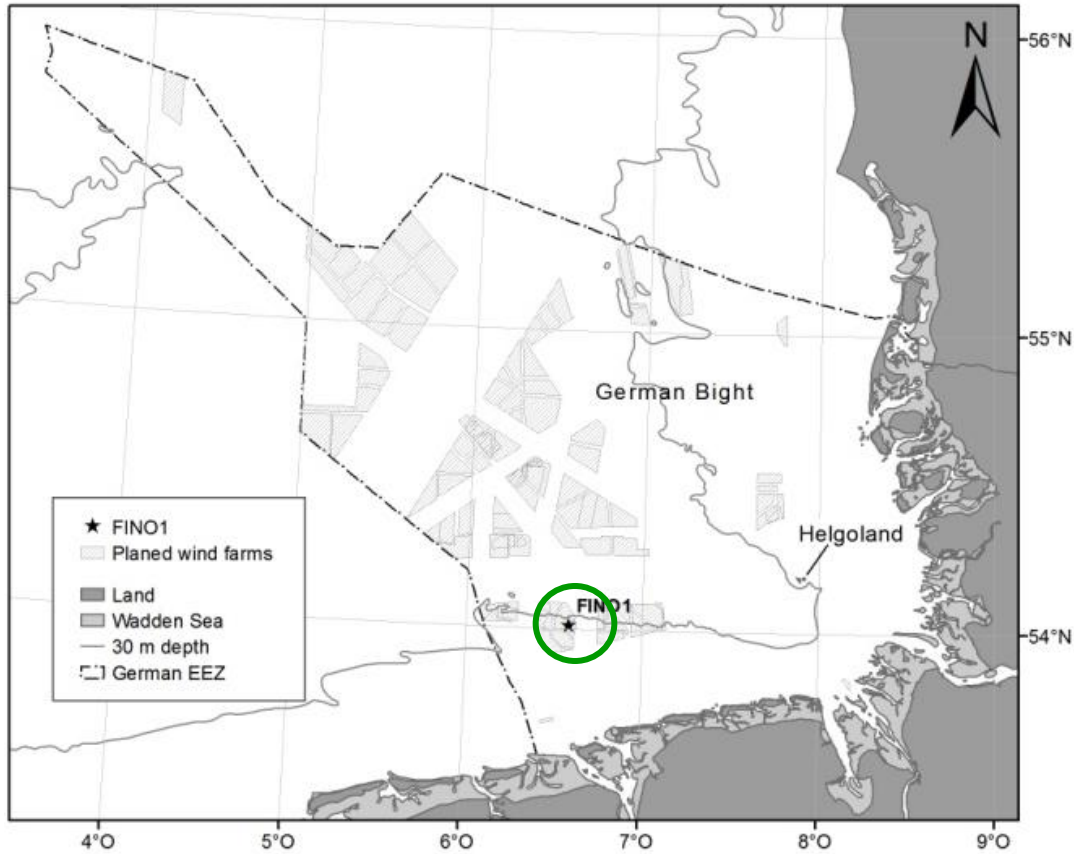
# Questions

What kind of mega fauna cenosis inhabit  
German Bight wrecks and the future OW-Foundations?

What kind of Makrozoobenthos cenosis will be generated at the German Bight  
OW-Foundations?

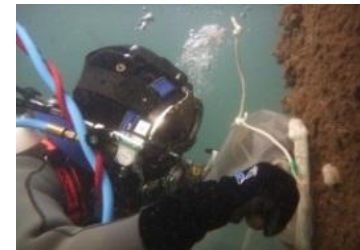
Are there new reef effects?

# Makrozoobenthos

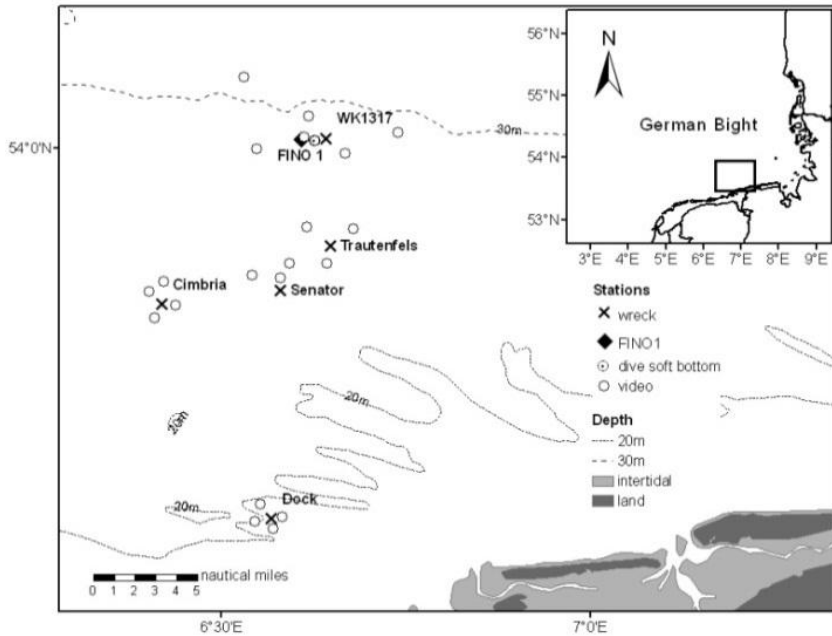


**2005–2007**

Makrozoobenthos (MZB) scrape samples of 6 depths



# Vagile demersal megafauna



## 2007-2009

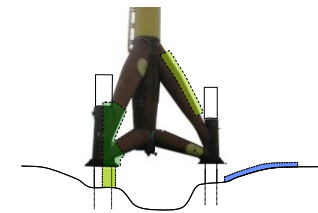
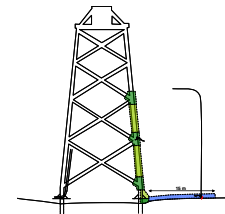
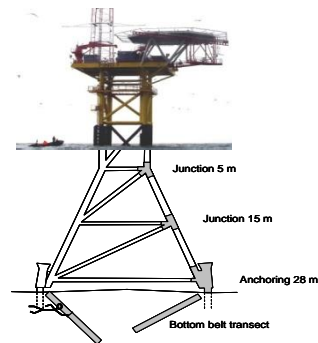
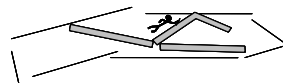
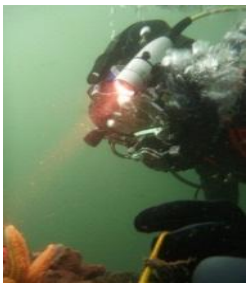
Wrecks - FINO 1 - Sand bottom

Fauna  $\geq 1\text{cm}$

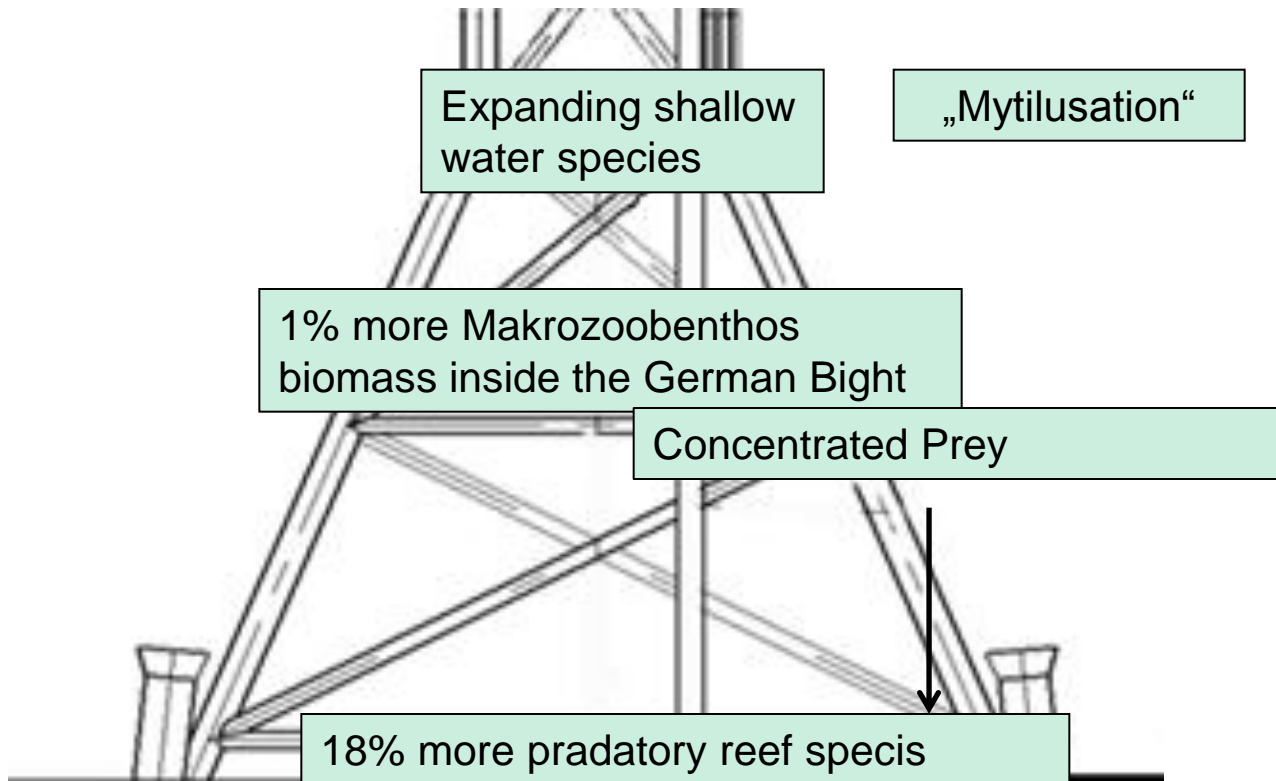
Diving belt transects

Towed-Video-Camera

## 2011 Windpark alpha ventus



## Offshore wind power reef effects?



For more information please contact

Dr. Roland Krone

[mail@krone-meereskunde.de](mailto:mail@krone-meereskunde.de)

and

[roland.krone@awi.de](mailto:roland.krone@awi.de)

