

Continuous thermosalinograph oceanography along RV POLARSTERN cruise track PS119

Data Processing Report

Contents

1 Introduction	1
2 Sensor Details	1
3 Processing Report	1
4 Appendix	5

Contact:

Gerd Rohardt
Alfred-Wegener-Institute
Am Handelshafen 12, D-27570 Bremerhaven, GERMANY
Mail: info@awi.de

Processing Agency:

FIELAX
Gesellschaft für wissenschaftliche Datenverarbeitung mbH
Schleusenstr. 14, D-27568 Bremerhaven, GERMANY
Tel: +49 (0) 471 30015 0
Fax: +49 (0) 471 30015 22
Mail: info@fielax.de

1 Introduction

This report describes the processing of raw data acquired by the thermosalinographs on board RV Polarstern during expedition PS119 to receive cleaned up and corrected salinity data. Detailed description of the processing of the data and the workflow is given in the general report “General Processing Report of Surface T/S Data RV Polarstern Cruises PS116, PS117, PS118, PS119 and PS120”.

Cruise details

Vessel name: RV Polarstern
Cruise name: PS119
Cruise start: 2019-04-13
Cruise end: 2019-05-31
Cruise duration: 48 days
Working area: Scotia Sea

2 Sensor Details

Following sensors were installed during cruise PS119. Only data from **TSG2** are uploaded to PANGAEA for cruise PS119 and are furthermore considered in this report (for reasoning see General Processing Report).

	TSG1	TSG2
Serial number	SBE21-3203	SBE21-3271
Installation	2018-10-16	2018-10-16
Deinstallation	2019-06-28	2019-06-28
Days installed	255	255
External temperature sensor	SBE38-110	SBE38-119

3 Processing Report

Database Extraction

Data source	DSHIP database (dship.awi.de)
Start of raw file	2019-04-13T12:00:00
End of raw file	2019-05-31T11:59:59
Number of lines in hexadecimal raw file	4147200
First dataset	2019-04-17T22:55:30
Last dataset	2019-05-29T21:08:32
TSG1 valid data	897843

Calculation of 10min means

The calculation of 10min means included the removal of outliers outside a 2-times standard deviation for each data interval. The number of outliers for each parameter are given here.

Number of outliers >2*std	
Internal temperature	31628
Conductivity	29466
External temperature	32228
Salinity	41959
Result after outlier removal	
Number 10-min-means	5988

Manual flagging

After processing the data were visually inspected. The whole data from a specific timestamp were deleted if there was only one parameter to be manually flagged. **0** data points were manually removed from the TSG2 dataset of PS119.

Assigning navigation data

Data from the corrected mastertrack of cruise PS119 were assigned to the 10min means of TSG2. A speed filter of 0.5 knots minimum speed is applied to avoid redundant data. See Figure 1 and Figure 2 for the processed and corrected data of TSG2.

Number of speed flags: 1745

Number of data in final output file: 4243

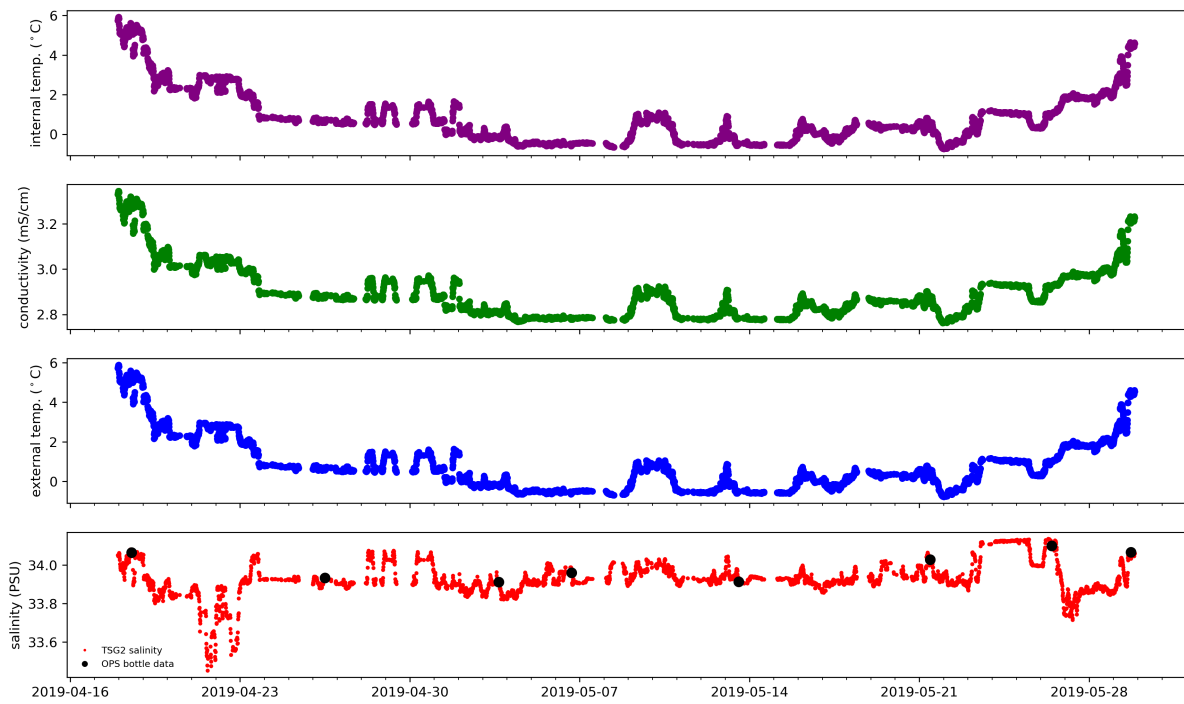


Figure 1: 10min means of data from TSG2

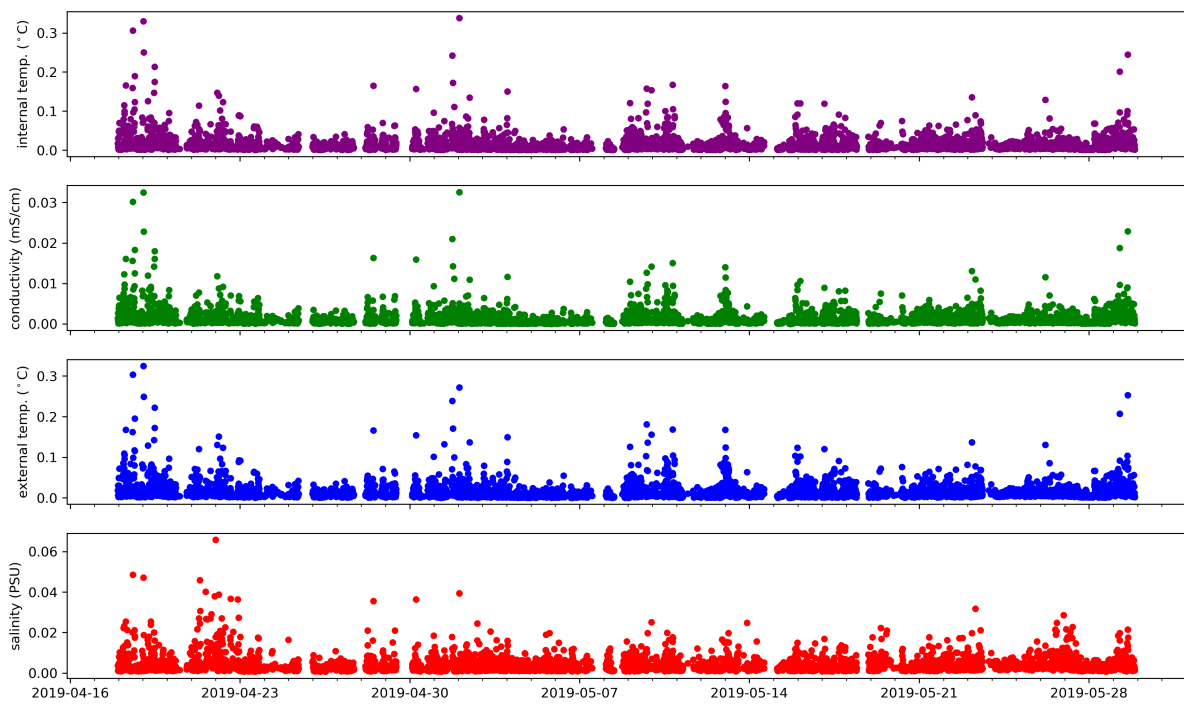


Figure 2: Standard deviations of 10min means of data from TSG2

Differences between internal and external temperature of TSG2 temperature sensors

Temperature differences between the internal and the external temperature sensors have to be small under normal circulation conditions. Means and standard deviations for the temperature differences as well as the number of data with a difference larger than 1 °C are given in the following table and are shown in Figure 3.

	TSG2 temperature difference	
	mean ± standard dev.	no. > 1°C
Spot values	0.0331 ± 0.0087°C	0
10-min means	0.0332 ± 0.0059°C	0

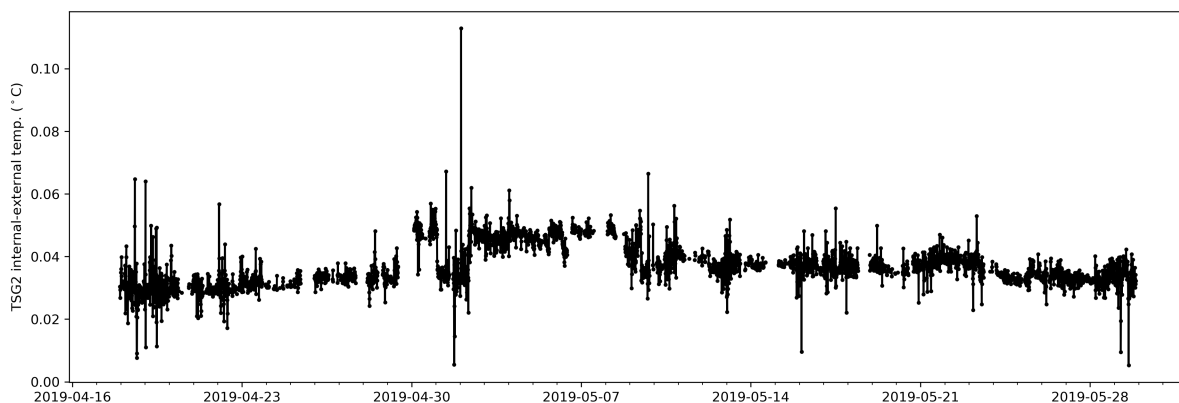


Figure 3: Differences between internal and external temperature sensors of TSG2

Result file

The result file is a plain text (tab-delimited values) file named **PS119_surf_oce.tab** with one data row in 10-min interval. For further information on the result file see the General Processing Report.

Comments

Data gaps due to system maintenance or system shutdown during harbour time:

- 30.04.2019 10:58 UTC till 13:43 UTC system maintenance due to pollution
- 08.05.2019 12:32 UTC till 18:24 UTC system maintenance due to pollution

Apart from this, data gaps are caused by speed flagging or manual removal of outliers.

4 Appendix

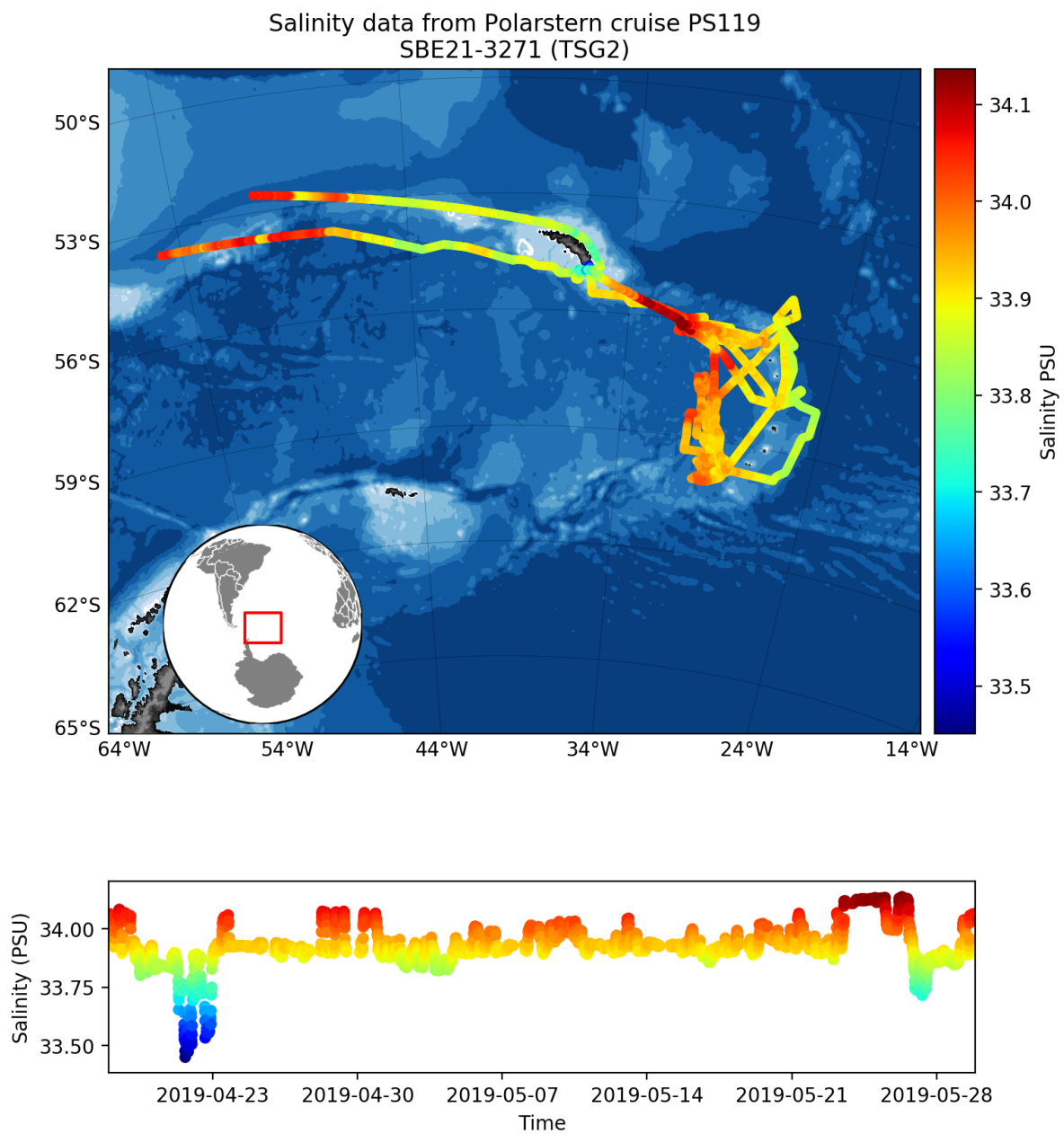


Figure 4: Salinity data from TSG2

Water temperature from Polarstern cruise PS119
SBE38-119 (TSG2)

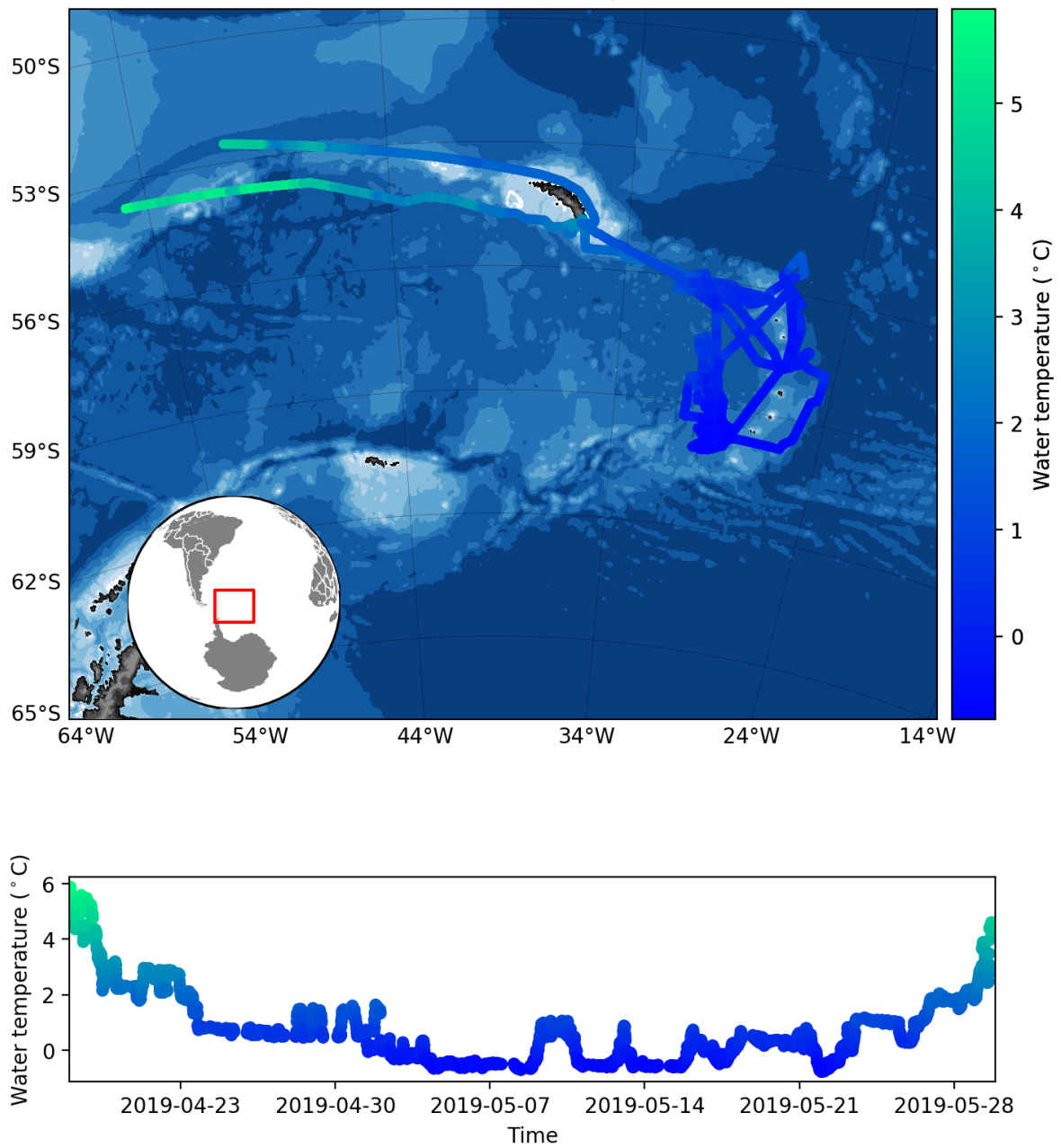


Figure 5: Temperature data from TSG2