



A baseline study of spatial variability of bacteria (total coliform, *E. coli*, and *Enterococcus* spp.) as biomarkers of pollution in ten tropical Atlantic beaches: concern for environmental and public health

Lailah Gifty Akita¹ · Juergen Laudien² · Charles Biney³ · Mark Osei Akrong⁴

Received: 4 January 2021 / Accepted: 8 July 2021 / Published online: 12 August 2021

© The Author(s), under exclusive licence to Springer-Verlag GmbH Germany, part of Springer Nature 2021

Abstract

Coastal water quality in urban cities is increasingly impacted by human activities such as agricultural runoff, sewage discharges, and poor sanitation. However, environmental factors controlling bacteria abundance remain poorly understood. The study employed multiple indicators to assess ten beach water qualities in Ghana during minor wet seasons. Environmental parameters (e.g. temperature, electrical conductivity, total dissolved solids) were measured in situ using the Horiba multiple parameter probe. Surface water samples were collected to measure total suspended solids, nutrients, and chlorophyll-a via standard methods and bacteria determination through membrane filtration. Environmental parameters measured showed no significant variation for the sample period. However, bacteria loads differ significantly ($p = 0.024$) among the beaches and influenced significantly by nitrate (55.3%, $p = 0.02$) and total dissolved solids (17.1%, $p = 0.017$). The baseline study detected an increased amount of total coliforms and faecal indicator bacteria (*Escherichia coli* and *Enterococcus* spp.) in beach waters along the coast of Ghana, suggesting faecal contamination, which can pose health risks. The mean \pm standard deviations of bacteria loads in beach water are total coliforms ($4.06 \times 10^3 \pm 4.16 \times 10^3$ CFU/100 mL), *E. coli* ($7.06 \times 10^2 \pm 1.72 \times 10^3$ CFU/100 mL), and *Enterococcus* spp. ($6.15 \times 10^2 \pm 1.75 \times 10^3$ CFU/100 mL). Evidence of pollution calls for public awareness to prevent ecological and health-related risks and policy reforms to control coastal water pollution. Future research should focus on identifying the sources of contamination in the tropical Atlantic region.

Keywords Beach water quality · Faecal indicator bacteria · *Escherichia coli* · Pollution · Environmental factors · Public health policy

Introduction

Life is refreshing at the beach, but pollution of the water is a risk to human health.

Coastal water bodies are impacted through pollution, deteriorating urban sanitation, land use, and hydrological changes (Armah et al. 1997, Berendesa et al. 2020, Pommepuy et al. 2005, Shuval 2006, Stewart et al. 2008). The human activities in Ghana's urban coastal regions are increasingly contributing to coastal water pollution (Akita et al. 2020, Gretsche et al. 2015, Labite et al. 2010, Lawson 2014). About 50% of the world's population lives in towns and cities within 100 km of the coast (Monney et al. 2013, Shuval 2006, Stewart et al. 2008). Many people do not have access to clean drinking water, and numerous people die of waterborne bacterial infections (e.g. cholera, typhoid, diarrhoea) (Cabral 2010, Ecklun-Mensah et al. 2019, Gretsche et al. 2015, Igobinosa and Okoh 2009, McGarvey et al. 2008, Osiemo et al. 2019). In developing countries, especially in Africa, water-borne diseases infect millions, especially children (Fenwick 2006, Osiemo et al. 2019, WHO 2015, Yang et al. 2012).

Responsible Editor: Diane Purchase

✉ Lailah Gifty Akita
lailah.akita@gmail.com

¹ Department of Marine and Fisheries Sciences, University of Ghana, P. O. Box LG 99, Legon, Accra, Ghana

² Alfred Wegner Institute Helmholtz Centre of Polar and Marine Research, Am Alten Hafen 26, 27568 Bremerhaven, Germany

³ Ecosystems Environmental Solutions, GD-213-5404 Accra, Ghana

⁴ CSIR-Research Institute, P.O. Box M 32, GP-018-964 Accra, Ghana

Ghana is a low-lying region (on average, 30 m above sea level) and bordered by the Gulf of Guinea between 4° and 12° N (Figure 1). The coastline is about 550 km long, and the continental shelf (about 75–120 m deep) is narrow and covers approximately 26,000 km² (Armah and Amlalo 1998, Armah et al. 2005, Lawson 2014). The Ghanaian coastal shore is categorised into the western, central, and eastern coastlines (Armah 1991, Armah et al. 2005, Ly 1980). The west coast covers 95 km of the stable shoreline and extends from Ghana's border with Côte d'Ivoire to the Ankobra River's estuary (Lamprey et al. 2010, Wiawe et al. 2013). The central zone includes 321 km of shoreline and extends from the Ankobra River's estuary, near Axim to Prampram on the eastern coast (Lamprey et al. 2010, Wiawe et al. 2013). The east zone covers 139 km of the shoreline, which extend from Prampram to Aflao, at the border to the Republic of Togo, and characterised by sandy beaches with a central deltaic estuary (e.g. Ada, Volta, Densu) and coastal lagoons (e.g. Keta and Songor) (Akita et al. 2020, Klubi et al. 2019, Lamprey et al. 2010, Larbi et al. 2018, Wiawe et al. 2013).

The Gulf of Guinea Coast is characterised by current and dynamic hydrodynamic conditions (Acheampong et al. 2021,

Hardman-Mountford and McGlade 2003). The coast resources serve as a source of seafood, recreational, educational, medicinal, and an important social and economic value to the well-being of coastal communities (McGlade et al. 2002, Okafor-Yarwood 2018).

Human activities in the Gulf of Guinea (GOG) coast have caused deterioration, eutrophication, and oxygen depletion in the coastal waters in the urban cities, resulting in biodiversity loss and waterborne diseases (Pabis et al. 2020, Scheren et al. 2002, Yeleliere et al. 2018a). Therefore, the discharge of effluents without inadequate treatments into nearshore waters is a critical environmental issue. However, monitoring of coastal waters in Africa using multiple indicators and lack of continuous oceanographic observational data from the sub-Saharan region is still scarce (Akita et al. 2020, López-López and Sedeño-Díaz 2015, Parmar et al. 2016, Zaghoul et al. 2020). Moreover, there is a lack of knowledge on bacteria distribution in beach water in West Africa, Ghana, and their environmental factors are unknown.

Beaches and bathing areas worldwide are dynamic zones in urban cities and contribute to coastal economics (Abdelzaher et al. 2013, Efstratiou 2001, Tiwari et al. 2021). However, the

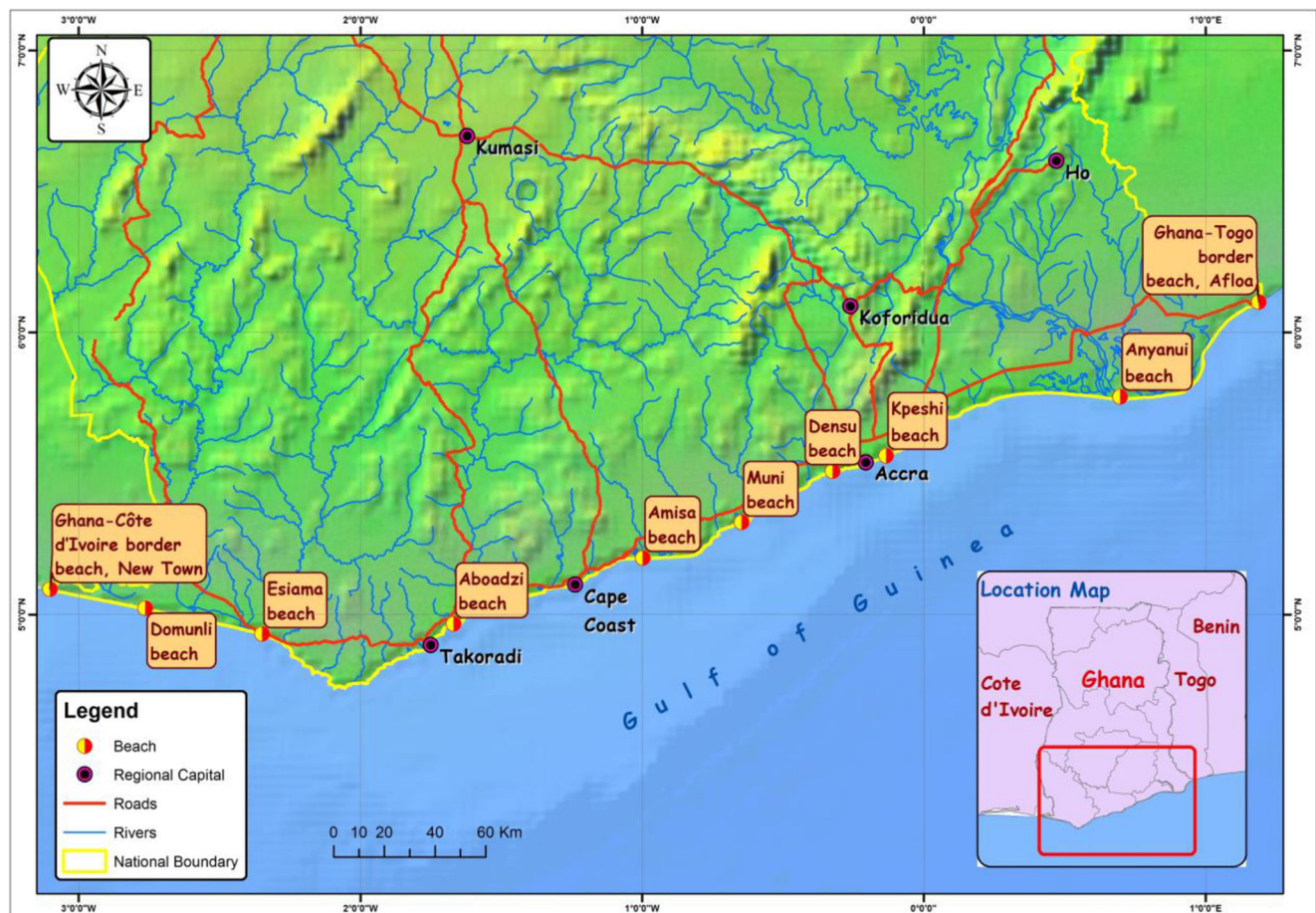


Fig. 1 A A map of sampled ten selected coastal beaches in Ghana. B Some of study beaches in the coast of Gulf of Guinea, Ghana (Ghana-Côte d'Ivoire border, Amisa, Muni, Aboadzi, Densu, Kpeshi, Anyanui, Ghana-Togo border)

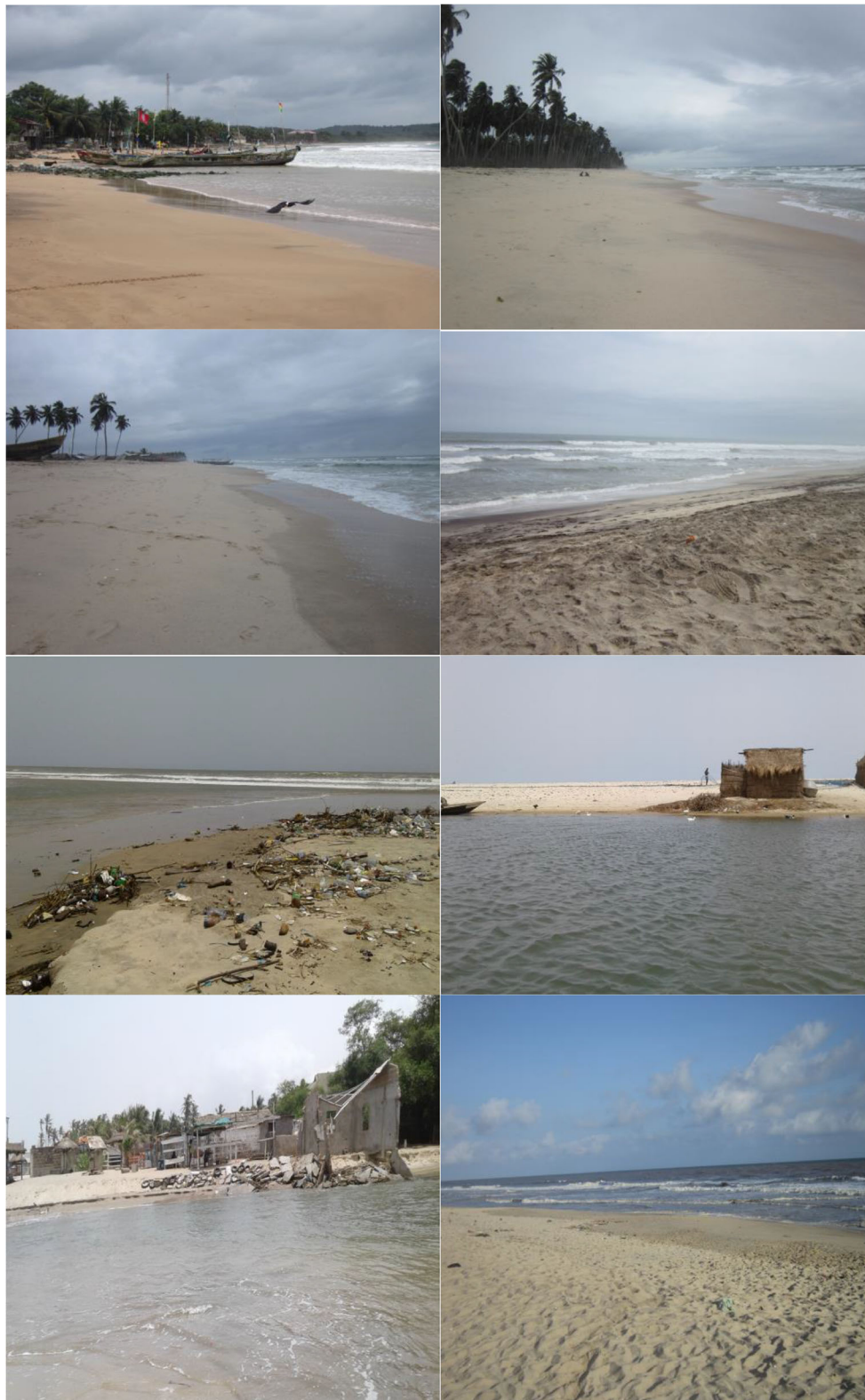


Fig. 1 continued.

discharging of urban, industrial, and domestic wastewaters into the sea, which can be a pollutant, raises concern for disease outbreaks and ecological and public health risks

(Bienfang et al. 2011, Prieto et al. 2001, Weiskerger et al. 2019). There are bacteria and pathogenic organisms in beach water and sand (Efstratiou 2018, Ferguson et al. 2005, Sabino

et al. 2014, Whitman et al. 2014). Therefore, sensitive indicator organisms are used for quantitative water quality assessment as potential pollution signals (Griffith et al. 2016, Sotavarela et al. 2021, Thoe et al. 2018). Water quality is a canonical group of a given water's physical, chemical, and biological properties (Gökçe 2016). Environmental factors affecting bacteria dominance and distribution in fresh and marine water are still inadequate (Hirn et al. 1980, Piggot et al. 2012, Whitman et al. 2011). A short survey was conducted to assess Ghana's beach water quality via multiple indicators, specifically physical, chemical, and biological analyses. We hypothesised no variability in physical, chemical, and biological characteristics of nearshore waters along the coast of Ghana during the minor wet season. The second hypothesis assumes no bacteria in the beach water in the Gulf of Guinea, Ghana. The study reveals high bacterial loads in beach water coupled with spatial variation along the coast of Ghana. Environmental parameters of the water body control the spatial variability and abundance of bacterial. Bacterial contamination in coastal waters is a major threat to public health, beach swimmers, and possible transfer in the food chain, resulting in food contamination. The preliminary results serve as useful ecological knowledge for public awareness, prevention of further contamination, policy reforms to safeguard beach swimmers, and future monitoring of nearshore waters in the tropical Atlantic Coast

Sampling and analytical methods

Geological settings

The climate in Ghana is tropical; the eastern coastal belt is dry and warm, while the south-western zone is hot and humid (Nyarko et al. 2015). The climate is drier from southwest to northeast of Accra. The climate variation in the coastal environment of Ghana is characterised by wet and dry seasons (Biney 1993, Biney and Asmah 2010). Two-thirds of the coastal zone falls within the dry coastal savannah strip, where annual rainfall ranged from 625 to 1000 mm and an average of 900 mm (Armah and Amlalo 1998). The coastal belt is characterised by two wet seasons: the major rainy season starts from May and ends in July, while the minor one occurs between August and October. The dry season starts from November to April (Allersma and Tilma 1993). The minimum temperature occurs in July–August and the maximum in February–March. The relatively dry coastal climate of the southeast is caused by the prevailing winds (south-south-westerlies) blowing almost parallel to the coast and to cool current of water originating offshore, local annual upwelling (Armah and Amlalo 1998).

The winds are characterised by persistent southwesterly monsoon modified by land and sea breezes in the coastal area

(Armah et al. 2003). Speeds vary between 0.5 m/s at night and 2.0 m/s at day (Armah et al. 2003). The tidal range determines the area of shore that is exposed to the air at any low tide. The tide on the coast of Ghana is regular and semi-diurnal (Armah et al. 2003). The tidal wave has the same phase across the country's coast (Armah et al. 2003). The tidal current has a low and insignificant influence on coastal processes, except within tidal inlets (Armah et al. 2003, Bakun 1993). Off the coast of West Africa, a counter equatorial current, the Guinea Current, flows eastward, and this flow is most prominent near Cape Three Points (Armah et al. 2003, Bakun 1993). The southwest monsoon winds show a maximum from May to July when it frequently exceeds one knot and occasionally reaches two knots (Armah et al. 2003, Bakun 1993). The currents are weaker during the rest of the year, with a minimum occurring between November and January at an average of about 0.5 knots (Armah et al. 2003, Bakun 1993). Throughout the year, particularly due to the northeasterly winds, the current direction may reverse temporarily and may reach a speed of 1.0 knot (Armah et al. 2003, Bakun 1993).

The upwelling is seasonal for Ghanaian coastal waters, dominated by two upwelling peaks per year. During either January, February, or March, weaker upwelling occurs and is strongest off Côte d'Ivoire, whereas intense upwelling fuels the system off Ghana between late June to early October (Quatey 1996). The two seasons are characterised by decreasing sea surface temperature (SST; typically < 25 °C), increasing salinity, and decreasing dissolved oxygen. The seasonal coastal upwelling periodically modifies the physical and chemical properties of the water masses and controls the biology of the sub-system (Koranteng and McGlade 2002, Minta 2003). Most of the year, coastal waters are stratified thermally with a well-mixed layer of warm (25–36 °C), low salinity water (33.67–34.22) 30–40 m above a sharp thermocline (Mensah and Anang 1998). Salinity is at maximum (35.05–35.38) below the thermocline at 60–80 depth. During upwelling, the thermocline weakens and rises to the surface resulting in a vertically homogeneous salinity profile above the shelf (Mensah and Anang 1998).

Sampling

The sampling randomised selected ten beaches were located in Ghana's eastern, central, and western coasts (Figure 1A, B; Table 1). The Global Position System (Garmin eTrex 10 Model) (Garmin Limited, KS, USA) (www.garmin.com) was used to record the coordinates of the beaches. A short survey was carried out from 8 to 14 October 2016 during a minor wet season at low tide to assess multiple beaches' nearshore water quality status in the tropical Atlantic coast using multiple indicators (e.g. physical, chemical, and biological methods). Horiba digital multiple parameter probe

Table. 1 Description of the coastal beaches of Ghana

Names of the beaches	Alternatives names of the beaches	Coastal zone in Ghana	Latitude	Longitude	Human impact level	Type of human activities	Estimated population
Ghana-Côte d'Ivoire border (Gh-Côte), beach, New Town	New Town/Ghana-Côte d'Ivoire border	Western	5° 5.452' N	3° 6.106'W	Transboundary/west	Transportation/fishing	Populated
Domunli beach	Jerusalem	Western	5° 1.372' N	2° 45.853' W	Moderate	Fishing activities	Moderately populated
Esiama beach	Esiama-Elimna	Western	4° 55.89-5'N	2° 20.957' W	Moderate	Fishing activities	Populated
Aboadzi beach	Aboadzi Thermal Plant	Western	4° 58.02-9'N	1° 40.158' W	High industry	Hydrothermal generation	Populated
Amisa beach	Amissano beach Amissano village	Central	5° 12.12-3'N	0° 59.849' W	Moderate	Fishing activities	Populated
Muni beach	Apam	Central	5° 19.61-1'N	0° 38.842' W	Moderate	Fishing activities	Populated
Densu beach	Bojo	Central	5° 30.40-3'N	0° 19.718' W	High industry	Tourism, fishing/-transportation	Highly populated
Kpeshi beach	La/Laboma	Central	5° 33.85-4'N	0° 8.041'W	High industry	Tourism, fishing	Highly populated
Anyanui beach	Fuvenie	Eastern	5° 46.37-2'N	0° 41.785' E	Moderate	Fishing activities/-transportation	Moderately populated
Ghana-Togo border (Gh-Togo), Afloa	Afloa, Ghana-Togo border	Eastern	6° 6.493' N	1° 11.319' E	Transboundary/east	Transportation/fishing	Populated

(Model U-52G 30M) (Horiba Company Limited, Japan) (www.Horiba.com) was used for in situ measurements of sea surface temperature, salinity, specific electrical conductivity, total dissolved solids, pH, redox potential, dissolved oxygen concentration, and saturation in nearshore beach waters. Each parameter was recorded three times, and the average was computed. Three replicates of water samples from each beach were collected from 10 cm depth into 500-mL clean plastic bottles for total solids, phosphate, and nitrate analyses. Three replicates of water samples from each beach were also collected into 500 mL plastic bottles covered with black polyethene bags for chlorophyll-a analyses. Ten surface water samples were collected at nearshore waters at shallow depth (10 cm) into 500-mL sterilised plastic bottles for bacterial examination at Laboratory at Council for Scientific and Industrial Research (CSIR)-Water Research Institute (WRI), Accra, Ghana. The water samples were stored on ice (4 °C) during transport to the laboratory. The analysis was carried out within 12 h of collection.

Analytical methods

Water samples from each beach were prepared using standard methods to examine water and wastewater (APHA 2012,

2017). Phosphates and nutrient concentrations were determined using HACH spectrophotometer (Model DR/2010) (HACH Company, Loveland, CO, USA) (www.hach.com) (HACH 2012). Total suspended solids (TSS) were measured gravimetrically (APHA 2012, 2017). Chlorophyll-a was extracted from 250 mL of water samples in 96% ethanol and determined spectrophotometrically at a specific wavelength method (Lorenzen 1967, Welschmeyer 1994, Wintermans and De Mots 1965). Chlorophyll-a (Chl-a) concentration (µg/L) is an indicator of phytoplankton concentration in the water column (Hinga et al. 1995).

Bacteria in beach water were analysed using standard methods and membrane filtration method (Millipore 1991). Total coliforms (Method APHA 9222A) and *Escherichia coli* (Method APHA 9260F) were determined by placing the filter on solidified Cromocult Agar Medi plates, following 18–24 h incubation at 37 ± 0.5 °C. Similarly, *Enterococcus* spp. (Method APHA 9230C) was enumerated by placing the filters on plates of Slanetz Bartley medium for 18–24 h at 44.5 ± 0.5 °C. Bacteria loads in beach water are expressed in units of organisms per 100 mL of water. Total coliforms were determined by membrane filtration method using M-Endo-Agar Les (Difco) at 37 °C and on membrane faecal coliform agar at 44 °C, respectively (Cabral 2010). The medium contains a fluorogen that reacts with

galactosidase in total coliforms, and a chromogen reacts with glucuronidase in *Escherichia coli*. The medium contains a chromagen that reacts with the enzyme glucosidase in *Enterococcus* spp. (Ferretti et al. 2011, Haugland et al. 2005). With the aid of colony counter, purple and blue colonies were counted as total coliforms, only blue colonies counted as *Escherichia coli*, and pinkish to red colonies counted as *Enterococcus* spp. colonies. The number of total coliforms, *Escherichia coli* and *Enterococcus* spp., are expressed by counting the colony-forming units (CFU) per 100 mL of water (Wade et al. 2003). The faecal indicator bacteria (FIB) such as *Escherichia coli* (*E. coli*) and *Enterococcus* spp. (enterococci) are sensitive biomarkers used to detect the faecal presence and potential pathogens in coastal waters and understand associated health risks (Piggot et al. 2012, Wade et al. 2010).

Statistical analysis

Statistical analysis such as mean, maximum, and minimum along with analysis of variance coupled with correlation analysis using Paleontological statistical software, PAST 3 (Hammer et al. 2001), and statistical package for social sciences version 21.0 (SPSS 21.0) (Leech et al. 2011). The environmental parameters were square-root transformed and then classified by clustering of samples based on Euclidean distance. The abundance of bacteria was log-transformed [$\ln(x \pm 1)$]; then, dendrograms were established based Bray-Curtis similarity (Bellier et al. 2012, Bray and Curtis 1957, Legendre and Gallagher 2001). Principal component analysis (PCA) was used to established sources of variation. Redundancy analysis (RDA) is the canonical form of PCA (Jongman et al. 1995, Rao 1964). Redundancy analysis is simply PCA with on-site restriction scores (Rao 1973, Ripley 1981). The advantage of using PCA and RDA biplots is that they provided more quantitative information than correspondence analysis (CA) (Jongman et al. 1995). Interactive selective forward selection in redundancy analysis (RDA) detected a subset of environmental variables which best explain the bacteria matrix (Šmilauer and Lepš 2014, ter Braak and Verdonschot 1995). The Monte Carlo permutation test ($\alpha = 0.05$; 999 permutations) was adopted and performed using the Canoco software version 5.03 (Šmilauer and Lepš 2014). Correlation coefficients at 0.05 and 0.01 levels were adopted. Pearson correlation coefficient (r) close to 1 was considered a better indicator of a strong association (Kinnear and Gray 1999).

Results

Physical, chemical, and bacteria indicators

There is no significant variation (one-way ANOVA $F_{\text{cal } 9, 60} = 0.208$; $p > 0.05$) in the physical parameters (7) measured among the ten beaches. The chemical parameters (5) do not

differ significantly (one-way ANOVA $F_{\text{cal } 9, 40} = 0.419$; $p > 0.05$) among the ten beaches. However, there is a significant ($F_{\text{cal } 9, 40} = 0.4966$; $p < 0.05$) spatial variation in the counts (CFU/100 mL) of total coliform and faecal bacteria (*Escherichia coli* and *Enterococcus* spp.) measured among the beaches (Figure 2B). The Student *t*-test indicated that the count of *E. coli* is significantly (one-tailed, $p = 0.026$, $p = 0.051$) higher than *Enterococcus* spp. among the beaches.

The descriptive statistics of environmental parameters (e.g. ranges, geometric mean, percentiles) are summarised in Table 2. High loads of total coliforms, *Escherichia coli*, and *Enterococcus* spp. were found in beach waters along the coast of Ghana (Table 3; Figure 2A, B). Maximum bacteria loads (CFU/100 ML) occur in central zones (Densu and Kpeshi beaches). However, there is also a high in transboundary border eastern zone (Ghana-Togo beach). However, minimum counts (CFU/100 mL) occur in the eastern zone of Ghana, where freshwater influx is (Anyanui beach).

Multivariate statistical analyses

Cluster analyses

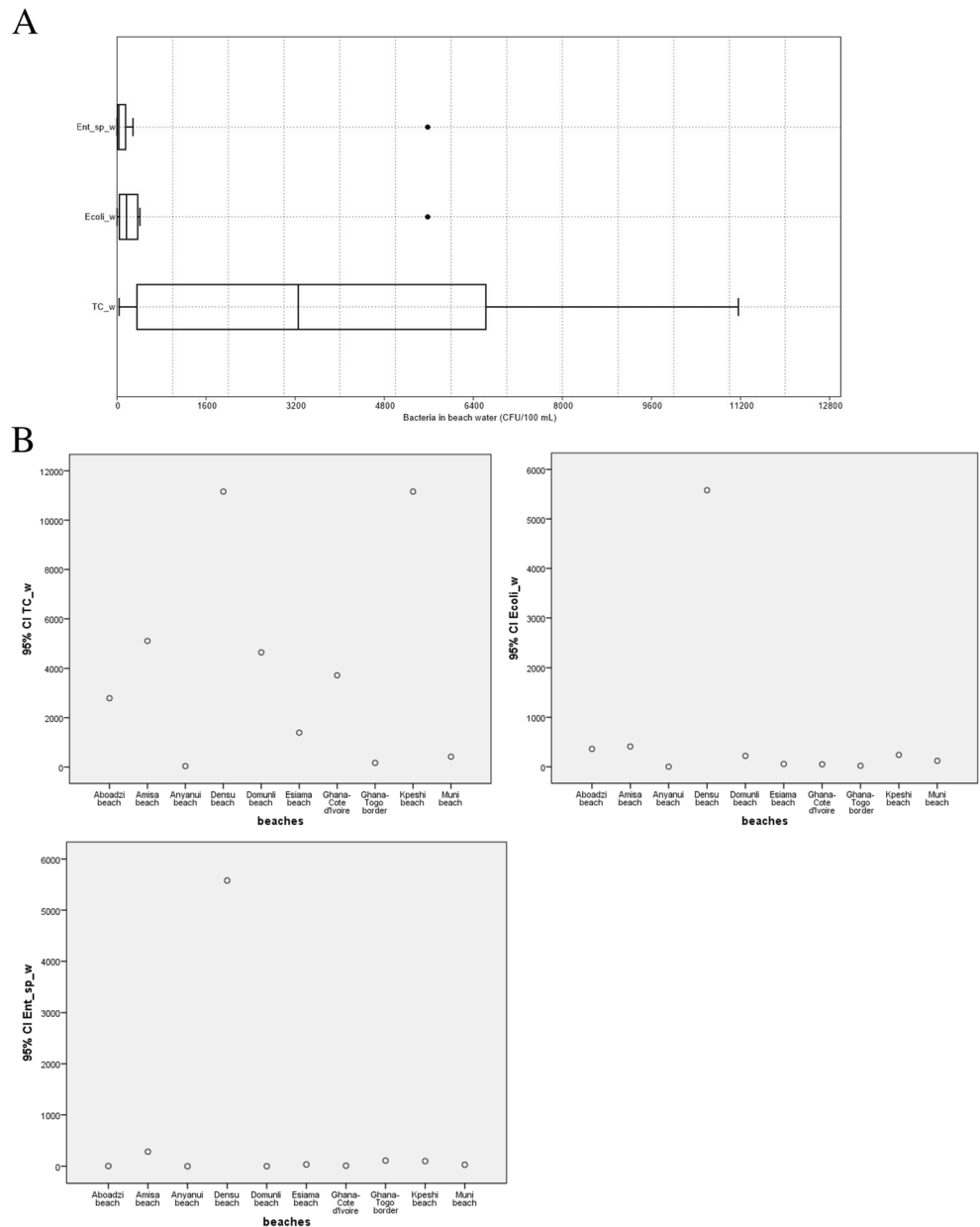
The similarity of environmental parameters formed a cluster (Figure 3A). There is a significant association between temperature and pH (Figure 3A). Similar associations of average group dendrograms of beaches (Euclidean distance) based on environmental characteristics of nearshore waters (Figure 3B). There is a significant association between *Escherichia coli* and *Enterococcus* spp. (Figure 4A). The corresponding hierarchical clusters of beaches are grouped based on bacteria counts (Bray-Curtis similarity) (Figure 4B).

Principal component analyses

The PCA plots display the relation of environmental factors influencing a given site (species-environmental variables) (Figure 5A). There are four major clusters of beach sites based on environmental factors. Sites with similar environmental characteristics cluster together: (i) Anyanui beach (freshwater influence, eastern zone); (ii) Ghana-Côte d'Ivoire and Domonli beaches (increase in oxygenation, western zone); (iii) Aboadzi, Kpeshi, Densu, Ghana-Togo border beach (increase in solute composition-total dissolved solids, western-central-eastern zones); and (iv) Amisa, Esiama and Muni beaches (increased in nutrient content, central zone) (Figure 5A).

Principal component analysis showed spatial grouping of beaches based on environmental data (Figure 5A). The first and second axes contributed to 59.43% of total variation in grouping of four clusters of beaches: (i) Anyanui; (ii) Ghana-Côte d'Ivoire and Domonli; (iii) Aboadzi, Kpeshi, Densu, and Ghana-Togo border; and (iv) Amisa, Esiama, and Muni (Figure 5A).

Fig. 2 **A** Boxplot of bacteria in beach water, Gulf of Guinea Coast. The whisker type is the standard error; whisker length is 95% interval, quartile method is an interpolation, and outliers (double asterisks). TC_w, total coliform in water; Ecoli_w, *Escherichia coli* in water; Ent_sp_w, *Enterococcus* spp. in water. **B** Spatial fluctuation (95% CI = confidence interval) of bacteria loads (CFU/100 mL) at study beaches. TC_w, total coliform in water; Ecoli_w, *Escherichia coli* in water; Entsp_w, *Enterococcus* spp. in water



A combination of environmental factors and bacteria data (species-environment) (Figure 5B) showed four groups of beaches with different levels of contamination, mainly (i) cluster 1, Kpeshi (total coliform and *Escherichia coli* most contaminated site); (ii) cluster 2, Ghana-Côte d’Ivoire, Domonli, and Aboadzi (more oxygenated and low contaminated sites); (iii) cluster 3, Esiama, Muni, Anyanui, and Ghana-Togo border; and (iv) cluster 4, Amisa and Densu.

Redundancy analysis

Redundancy analysis (RDA) indicated that two significant environmental factors account for 72.42% variability in the spatial distribution of bacteria (Figure 6) in study sites.

Nitrate (55.3%) and total dissolved solids (17.2%) significantly ($p < 0.05$) influenced the spatial distribution of total coliforms, *Escherichia coli*, and *Enterococcus* sp. in the coastal beaches of Ghana (Table 4; Figure 6)

Pearson correlations

Salinity (Table 5) significantly positively correlated with electrical conductivity ($r = 0.995, p = 0.000$) and total dissolved solids ($p = 0.956, p = 0.000$). There exist significantly positively $r = 0.942, p = 0.000$ correlation between dissolved oxygen concentration and dissolved oxygen saturation. Total suspended solids significantly positively correlated with phosphate ($r = 0.818, p = 0.004$) and nitrates ($r = 0.694, p = 0.026$).

Table. 2 Descriptive statistics of environmental parameters of coastal beaches in Ghana

Names of the beach	Temp. (°C)	EC (mS/cm)	Sal (PSU)	pH	O ₂ (mg/L)	O ₂ Sat (%)	TDS (mg/L)	TSS (g/L)	Eh (mV)	Phos (mg/L)	Nit (mg/L)	Chl a (µg/L)
Gh-Côte	29.24	43.04	27.52	8.33	6.40	85.10	21.52	4.00	83.50	0.06	1.97	2.61
Domunli	27.53	49.39	30.57	9.05	5.06	75.00	23.57	7.00	61.83	0.04	2.10	2.26
Esiama	27.47	43.50	27.95	8.03	3.80	55.80	21.74	23.00	194.40	0.25	2.77	2.88
Aboadzi	26.94	48.76	31.75	8.66	4.01	59.61	24.36	7.00	163.00	0.12	2.30	2.64
Amisa	28.20	33.13	21.00	8.70	3.68	52.00	16.57	76.33	109.57	0.54	3.57	2.61
Muni	30.82	41.85	76.67	9.20	4.33	65.80	20.94	10.33	217.20	0.37	2.17	0.43
Densu	30.74	52.60	34.70	8.30	6.44	109.60	31.60	10.67	194.70	0.16	3.27	1.23
Kpeshi	28.27	50.23	32.81	8.75	3.69	55.90	25.09	18.67	265.00	0.16	2.73	1.69
Anyanui	29.36	23.41	14.01	8.56	6.17	86.90	11.71	13.00	134.90	0.07	1.63	2.44
Gh-Togo	29.51	49.21	33.01	8.80	4.85	74.50	24.61	12.00	158.20	0.08	2.53	6.13
Mean ± SD	28.81 ± 1.4	43.51 ± 9.1	33.00 ± 16.6	8.64 ± 0.4	4.84 ± 1.1	72.02 ± 18.1	22.17 ± 5.3	18.20 ± 21.2	158.23 ± 62.7	0.18 ± 0.2	2.50 ± 0.6	2.49 ± 1.5
Minimum	26.94	23.41	14.01	8.03	3.68	52.00	11.71	4.00	61.83	0.04	1.63	0.43
Maximum	30.82	52.60	76.67	9.20	6.44	109.60	31.60	76.33	265.00	0.54	3.57	6.13
Geom. mean	28.65	43.13	27.67	8.63	4.83	71.74	21.86	12.71	136.94	0.14	2.44	2.08
75 percentile	27.51	40.56	25.89	8.5	3.77	55.88	103.08	20.28	7	0.07	2.07	1.57
25 percentile	29.4	49.6	32.86	8.77	6.23	85.55	194.48	24.73	19.75	0.28	2.9	2.7
Median	28.76	48.89	31.16	8.72	4.96	74.75	146.55	23.97	11.34	0.14	2.42	2.52
Std. error	0.38	2.9	2.03	0.09	0.36	5.75	19.01	1.69	6.7	0.05	0.19	0.47
Natural background ranged	27–33	20–52.60	34–36	8–9	6–7	-	-	-	-	-	-	-

Temp temperature, EC electrical conductivity, Sal salinity, DO dissolved oxygen concentration, DO Sat dissolved oxygen saturation, Eh redox potential, TDS total dissolved solids, TSS total suspended solids, Phos phosphate, Nit nitrates, Chl a chlorophyll-a, SD standard deviation, Std. error standard error, Geom. mean geometric mean

There is a significant positive correlation ($r = 0.633$, $p = 0.049$) between *Escherichia coli* and total coliforms. There is positive significant ($r = 0.997$, $p = 0.000$) correlation between *Escherichia coli* and *Enterococcus* spp. *Escherichia coli* ($r = 0.662$, $p = 0.037$) and *Enterococcus* spp. ($r = 0.678$, $p = 0.031$) positively and significantly correlated with dissolved oxygen saturation (Table 5).

Discussion

Physical and chemical characteristics of nearshore beach water

The lowest temperature (26.94 °C) was recorded at Aboadzi beach on the western coast and the highest (30.82 °C) at Kpeshi beach in the central zone. Sea surface water temperature along the coast of Ghana ranged from 25.0 to 28.7 °C with mean ± SD 26.9 ± 1.28 °C, and Chorkor beach ranges from 24.5 to 28.7 °C with mean ±SD 27.2 ± 1.32 °C (Akita et al. 2014). Ghana is situated in the tropical equatorial climate belt with an annual mean temperature between 25 and 36°C

(Allersma and Tilma 1993). In this region, the sea surface water temperature varies marginally throughout the year (Biney 1982, 1993). The coastal waters are thermally stratified with a well-mixed layer of warm (25–36 °C), low salinity water of 33.67–34.22 PSU in 30–40 m above a sharp thermocline (Mensah and Anang 1998). The salinity of 35.05–35.38 PSU is below the thermocline at 60–80 depth. During upwelling, the thermocline weakens and rises to the surface resulting in vertically homogeneous salinity profile above the shelf (Mensah and Anang 1998). The lowest salinity (14.01 PSU scale) was recorded at Anyanui beach on the eastern coast due to freshwater intrusion from Volta River at Lower Volta Lake, which also connects to Anyanui Lagoon, whereas the highest (34.70 PSU scale) in Densu beach in the central coast. Marine waters have a much higher conductivity than fresh to estuarine, ranged from 20.0 to 40.0 mS/cm). Salinity of seawater is normally 36 PSU scale. The salinity of coastal beach waters in Ghana ranged from 33.5 to 37.9 (PSU scale) with mean ± SD value 36.6 ± 1.53 (e.g. for La beach) and from 34.5 to 38.0 (PSU scale) with mean ± SD value 36.7 ± 1.21 (e.g. for La beach) (Akita et al. 2014). The lowest (8.30) pH was measured at Esiama beach and the highest (9.05) at Domunli

Table. 3 Bacterial loads (CFU/100 mL) in beach waters, Gulf of Guinea, Ghana

Beaches	Bacteria types		
	TC_w (CFU/100 mL)	<i>E. coli_w</i> (CFU/100 mL)	<i>Ent. sp_w</i> (CFU/100 mL)
Gh-Côte	3.72×10^3	5.0×10^1	1.0×10^1
Domunli	4.65×10^3	2.20×10^2	1×10^0
Esiama	1.40×10^3	5.5×10^1	3.5×10^1
Aboadzi	2.79×10^3	3.60×10^2	5×10^0
Amisa	5.12×10^3	4.10×10^2	2.85×10^2
Muni	4.20×10^2	1.20×10^2	30×101
Densu	11.16×10^3	5.58×10^3	5.58×10^3
Kpeshi	11.16×10^3	2.40×10^2	1.0×10^2
Anyanui	3.6×10^1	1×10^0	0×10^0
Gh-Togo	1.70×10^2	2.0×10^1	1.10×10^2
Mean ± SD	$4.06 \times 10^3 \pm 4.16 \times 10^3$	$7.06 \times 10^2 \pm 1.72 \times 10^3$	$6.15 \times 10^2 \pm 1.75 \times 10^3$
Minimum	3.6×10^1	1×10^0	0×10^0
Maximum	11.16×10^3	5.580×10^3	5.58×10^3
Geom. mean	1.6×10^3	1.11×10^2	0×10^0
75 percentile	6.63×10^3	3.72×10^2	1.53×10^2
25 percentile	3.57×10^2	4.20×10^1	4×10^0
Median	3.26×10^3	1.70×10^2	3.20×10^1
Std. error	1.32×10^3	5.43×10^2	5.52×10^2
Confidence level 95%	2.98×10^3	1.23×10^3	1.25×10^3
Ghana Standard Water Quality (GS 175-1)	0×10^0	0×10^0	0×10^0
WHO guidelines	0×10^0	0×10^0	0×10^0

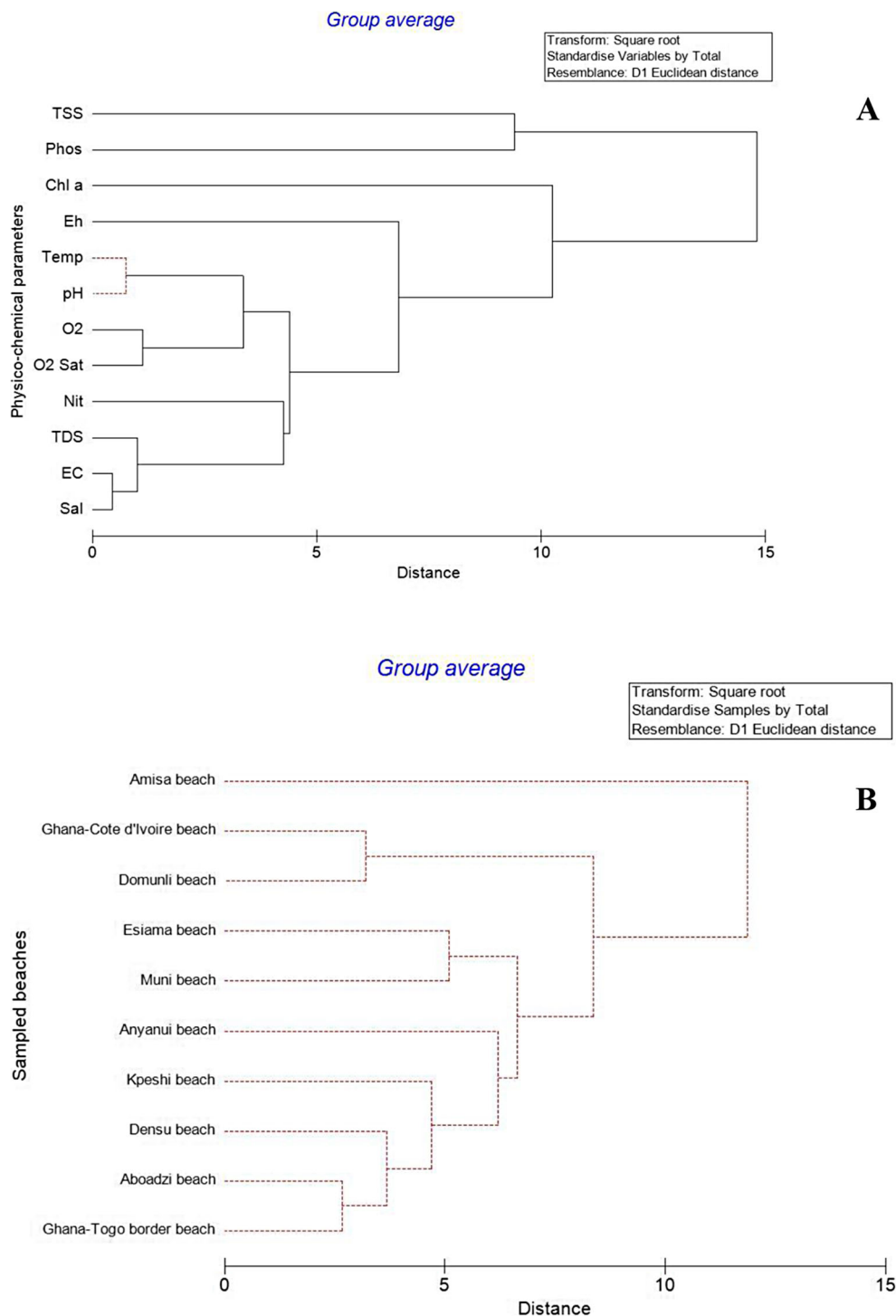
WHO guidelines (< 1 CFU/100 mL) for potable water (WHO 2011). The drinking water quality guideline (CFU/100 mL) of Ghana, Ghana Water Company Limited

TC total coliforms, *E. coli_w* *Escherichia coli* in water, *Ent. sp_w* *Enterococcus* sp. in water, *SD* standard deviation, *Std. error* standard error, *Geom. mean* geometric mean

beach. The EU has set protection limits of pH ranged from 6 to 9 as harmless for fisheries and aquatic life (Chapman 1996). The pH values fall within the pH ranged between 6 and 9 for natural waters and pH of 8.30 for seawater (Stumn and Morgan 1981). The lowest (3.68 mg/L) dissolved oxygen concentration (DO) was recorded in Amisa beach and the highest (6.44 mg/L) at Densu beach. The nature of beach morphodynamics type may influence circulation in this system. Dissolved oxygen concentration is 7.0 mg/L for tropical surface waters (Biney 1993, Clark 2000) and unpolluted waterbodies of 8.0 to 10.0 mg/L at 25 °C (DFID 1999). Dissolved oxygen concentration is another important environmental variable used for water quality controls. Adequate oxygen is needed to maintain the biological life of ecosystems. A dissolved oxygen concentration of 4–5 (mg/L) can sustain aquatic life. However, below 5.0 (mg/L) may indicate high microbial activity and adversely affect aquatic life (DFID 1999, Stumn and Morgan 1981). In extreme situations, decrease dissolved oxygen levels can lead to anoxic conditions,

fish kills, and odours resulting from anaerobic conditions (DFID 1999, Stumn and Morgan 1981). The lowest (61.80 mV) redox potential was measured at Domunli beach and the highest (265.00 mV) at Kpeshi beach. A low redox potential corresponds to high pH, as observed in Domunli beach. Higher redox potential means anoxic conditions as observed in Kpeshi. The redox potential for natural waters ranged from 500 to 600 mV (Stumn and Morgan 1981, Wetzel 2001). With depletion of oxygen, the redox potential decreased to 0 to 200 mV (Stumn and Morgan 1981, Wetzel 2001). The lowest total dissolved solids (11.71 mg/L) concentration was recorded at Anyanui beach and the highest (31.60 mg/L) at Densu beach. The lowest total suspended solids (4.00 g/L) concentration was recorded at the Ghana-Côte d’Ivoire, border beach and the highest (76.33 g/L) at Amisa beach which is connected to the Amisa Estuary, has tidal mixing and a large fishing industry. These activities may results in resuspension of minerals and salt particles through tidal influx and bottom trawling. High total dissolved solids in water originate from

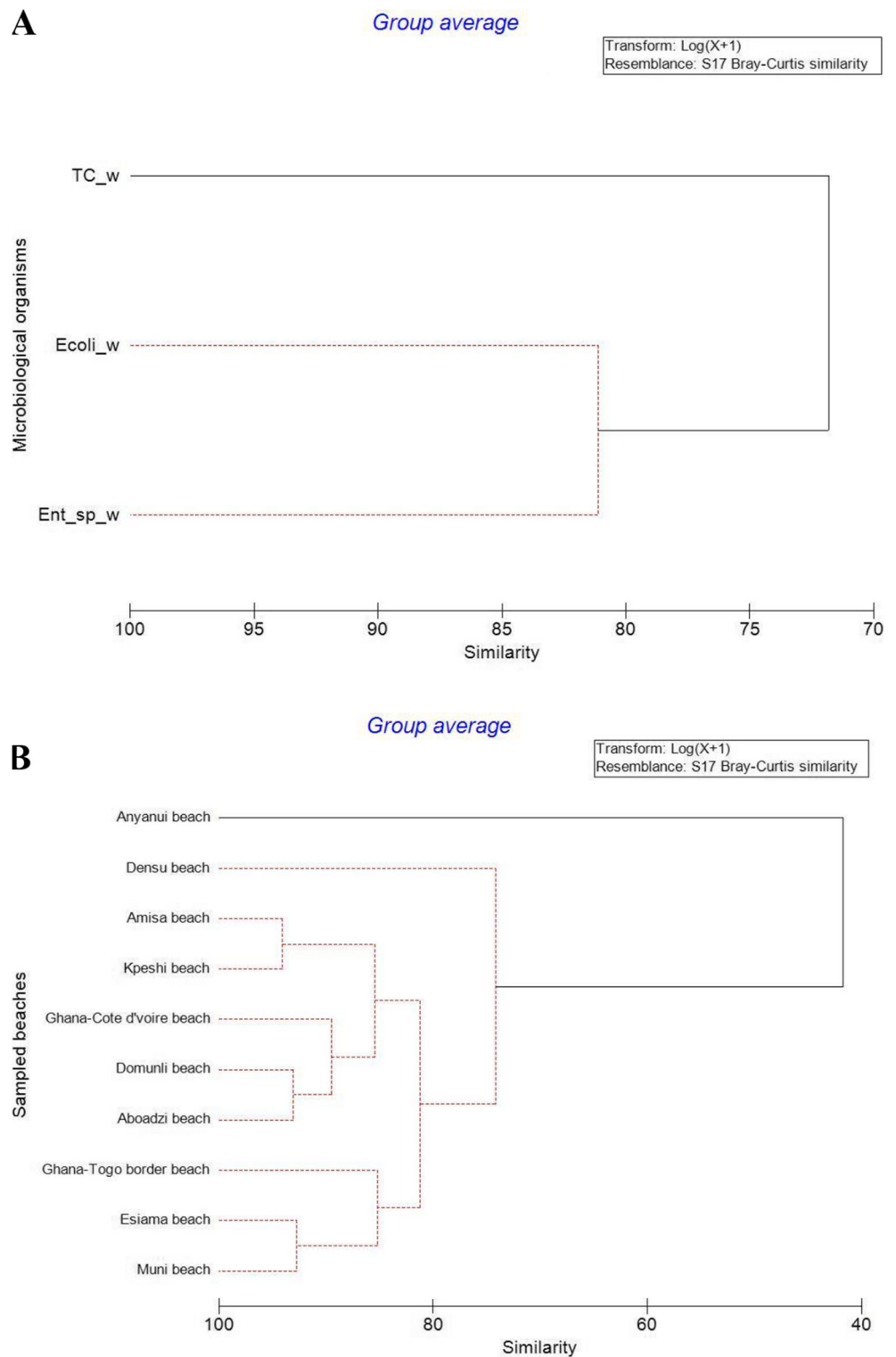
Fig. 3 A Group average hierarchical dendrogram of environmental parameters. There are three major clusters. The only significant cluster exists between temperature and pH. The thin red dotted lines indicate a significant structure of similarity (SIMPROF Test, $p < 0.05$). The thick black lines indicate no significant structure. TSS, total suspended solids; Phos, phosphate; Chl a, chlorophyll-a; Eh, redox potential; Temp, temperature; pH; O₂, dissolved oxygen concentration; O₂ Sat, dissolved oxygen saturation; Nit, nitrates; TDS, total dissolved solids; EC, electrical conductivity; Sal, salinity. **B** Hierarchical cluster (group average) of beaches based Euclidean distances of environmental data. The cluster displays the similarity of beaches based on environmental data



natural sources, urban and agricultural runoff, sewage discharges, and industrial wastewater. The lowest phosphate (0.04 mg/L) concentration was measured at Domunli beach and the highest (0.54 mg/L) at Amisa beach. The mean phosphate concentration of (0.18 ± 0.16 mg/L) is higher concentration in unpolluted, natural waters (ranged from 0.005 to 0.020 mg/L) (Biney 1993, Clark 2000) (Chapman 1996). Phosphate concentration is as low as 0.001 mg/L in some

pristine waters (Chapman 1996). Phosphate is the limiting nutrient for algal growth and controls a surface water body (Crouzet et al. 1999, Paerl et al. 2011). High phosphate concentrations may indicate pollution and are largely responsible for eutrophic conditions (Omoike and Vanloon 1999, Saad and Younes 2006). The lowest nitrate (1.63 mg/L) concentration was measured at Anyanui beach and the highest (3.57 mg/L) at Amisa beach. Nitrates in the coastal beach waters

Fig. 4 **A** Group average hierarchical dendrogram of bacterial loads. There is a significant association between *Escherichia coli* and *Enterococcus* spp. Thin red dotted lines showed significant clusters (SIMPROF Test, $p < 0.05$). TC_w, total coliform in water; *E. coli*_w, *Escherichia coli* in water; *Ent. sp.*_w, *Enterococcus* spp. in water. The thick black lines indicate no significant structure. **B** Group average hierarchical clusters of beaches based on only bacteria. There exist three significant clusters of beaches except for Anyanui beach (evidence of structure)



of Ghana ranged from 0.5 to 0.25 to 1.8 mg/L in coastal waters of Ghana (Akita et al. 2014, Biney and Asmah 2010). Low nitrates occur in unpolluted waters (Jaji et al. 2007). Nitrates is the most highly oxidised form of nitrogen compounds present in surface waters (Igobinosa and Okoh 2009). Nitrogen-fixing bacteria and algae convert free nitrogen gas (N_2) into nitrates

(NO_3^-) (Igobinosa and Okoh 2009). Nitrogen waste products such as urea and uric acid are converted to ammonia. Nitrate bacteria then utilise ammonia to form nitrites (NO_2^-), which are converted into nitrate. Phosphates and nitrates are essential nutrients necessary for primary production and naturally replenished by river runoff (Correl 1998, Sharpley et al.

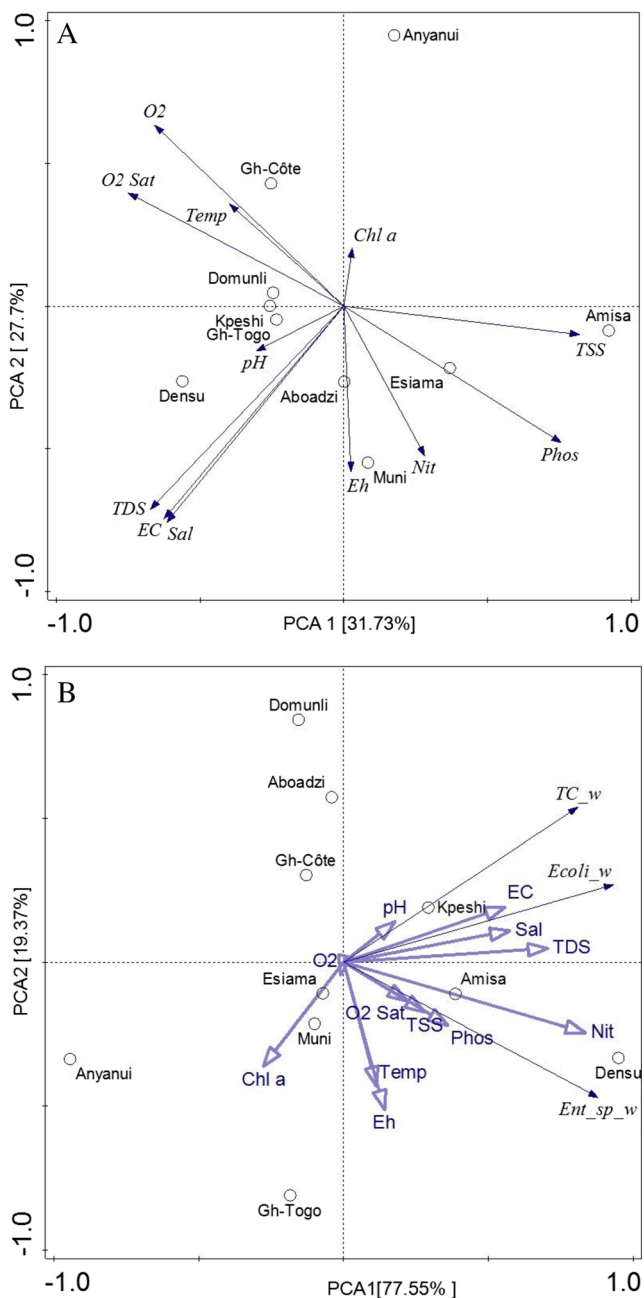


Fig. 5 **A** Principal component analysis (PCA) of a grouping of beaches (circles) based on environmental parameters (blue arrows). The long arrows show the most influential environmental parameters for the group of beaches. The horizontal first axis contributes 31.73% in the PCA plots, and the vertical second axis contributed 27.7%. The orientations of these arrows indicate the correlation of these parameters in PCA ordination axes. Thus, the PCA shows the influencing environmental factors at a given beach. **B** Principal component analysis (PCA) ordination of integrated environmental parameters (thick violet arrows) and bacteria data (thin blue arrows) (triangles). The long arrow indicates the most influential parameters. The first and second axes of PCA contribute 96.9% to explain the variation. The *Escherichia coli* and total coliform are prevalent in beaches with increased nitrate concentration, while *Enterococcus* spp. are predominant in beaches with higher total dissolved solids

2013). Phosphates and nitrates are limiting nutrients for plant growth (Paerl and Huisman 2008). However, excess nutrients lead to the phytoplankton blooms process, often termed eutrophication (Kennish 2001, Nixon 1995, Smith and Schindler 2009). The major proportion of phosphate are transported to the aquatic environment from cultivated land usually in particulate form through erosion and leaching transports relatively little soluble P, as P is strongly adsorbed on clay particles (Carpenter et al. 1998, Elser et al. 2007, Sharpley et al. 2013).

The trophic state of beach water in Ghana based on chlorophyll-a concentration (0.43 to 6.13 $\mu\text{g/L}$) indicated ultra-oligotrophic (<0.95 - 2.5 $\mu\text{g/L}$) to mesotrophic condition (2.5–7.3 $\mu\text{g/L}$) (Gökçe 2016, Vollenweider and Kerekes 1982). Chlorophyll-a concentration at the Densu estuary ranged between 0.96 and 4.38 $\mu\text{g/L}$ (Akita et al. 2020). Chlorophyll-a concentration ranged from 0.10 to 3.80 mg/L (average 1.39 ± 0.84) in coastal waters of the Caspian Sea (Boyer et al. 2009, Bucci et al. 2012, Möller and Scharf 1986). Very low and high levels of chlorophyll-a concentration can be harmful to marine biota (Acheampong et al. 2021, Jamshidi and Abu Bakar 2011). Chlorophyll-a concentration act as an indicator of phytoplankton abundance and biomass in coastal ecosystems (Addico et al. 2018, Hinga et al. 1995, Monbet 1992). The chlorophyll-a concentration provides estimates of phytoplankton biomass and thus productivity of a water body (Boyer et al. 2009, Jamshidi et al. 2010, Tripathy et al. 2005, UNESCO 1994). Eutrophication is associated with increased phytoplankton blooms and increased primary production (Gökçe 2016, Wellman et al. 2002).

Bacterial loads in beach water

The presence of bacteria (total coliforms, *Escherichia coli*, and *Enterococcus*) in beach water (Figure 2A) is an indicator of pollution along the coast of Ghana. High bacteria indicator organisms were measured at central zone beaches (e.g. Densu, Kpeshi) (Table 3; Figure 2A), characterised by massive human activities such as populated coastal fishing communities, industries, beach resorts, coastal tourism, and frequent tourism beach swimmers, among others. A maximum and equal amount of *Escherichia coli* (5.58×10^3 CFU/100 mL) and *Enterococcus* (5.58×10^3 CFU/100 mL) were detected at Densu beach (Table 3; Figure 2A). In urban cities such as Greater Accra, the Metropolitan has to deal with insufficient waste treatment facilities. There are inadequate sewage treatment plants; hence, sometimes, there is dumping of effluent without treatment directly at the coast. The bacteria pollution can be either a single point source or diffuse sources from different sources such as industries, factories, beach resorts, domestic activities, and Ghana's coastal belt. A minimum (Figure 2B) *E. coli* (1.0×10^0 CFU/100 mL) without

Table. 4 Summary of redundancy analyses (RDA) on selecting the best environmental variables influencing spatial variation of bacteria loads in beach waters in Ghana

Analysis “constrained”					
Method: RDA					
Total variation is 129.38; explanatory variables account for 72.4%					
(Adjusted explained variation is 64.5%)					
Summary table:					
Statistics	Axis 1	Axis 2	Axis 3	Axis 4	
Eigenvalues	0.7099	0.0142	0.202	0.0479	
Explained variation (cumulative)	70.99	72.42	92.62	97.41	
Pseudo-canonical correlation	0.9591	0.303	0	0	
Explained fitted variation (cumulative)	98.03	100			
Analysis “constrained”					
Forward selection results:					
Name of environmental parameter	Explains %	Contribution %	Pseudo-F	P	P(adj)
Nit (nitrates—mg/L)	55.3	55.3	9.9	0.002	0.024
TDS (total dissolved solids—mg/L)	17.2	17.2	4.4	0.017	0.102

Enterococcus was recorded at Anyanui beach, characterised by freshwater flow into the nearshore waters and less populated communities.

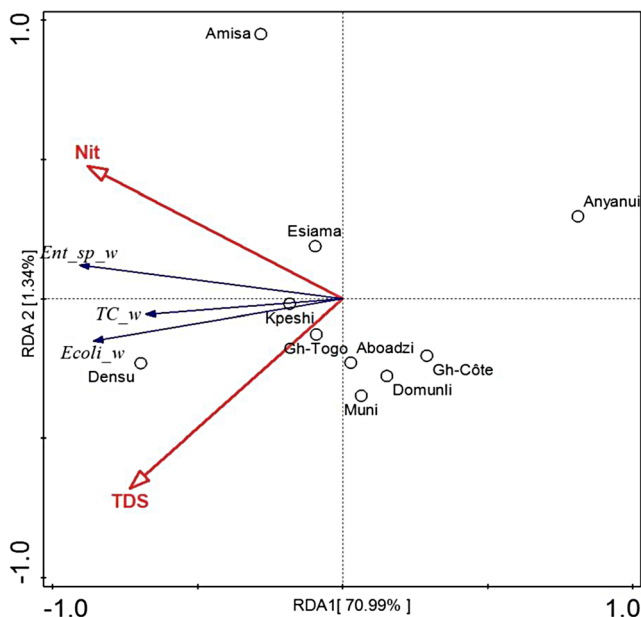


Fig. 6 Redundancy analysis (RDA) diagram of the best environmental variables (red arrows) selected by the forward selection procedure influencing the bacteria (blue arrows) counts in the studied beaches. The ordination diagram with the first axis (horizontal) and the third (vertical) axis of distance-based constrained RDA. The first and second axis of RDA contributes 72.24% to species response to environmental variables. The RDA analysis showed beaches with high nitrate group together while beaches with high total dissolved solids also form another cluster group. The RDA indicates nitrates to control the abundance of *Escherichia coli* and total coliform, while total dissolved solids promote an increase in *Enterococcus* spp.

Sources of spatial variation in bacteria load

Cluster (Figure 3A) and principal component analyses (Figure 4A) established four clusters of beaches based on only environmental factors at a given site: (i) cluster 1, Anyanui beach located in the eastern coast is influence by freshwater flow from Volta River leading to low saline condition and controlled by chlorophyll-a concentration; (ii) cluster 2, Ghana-Côte d’Ivoire and Domonli beaches are situated in the western coast and mostly influenced by high oxygenated seawaters; (iii) cluster 3, Aboadzi, Kpeshi, Densu, and Ghana-Togo border beaches are located in western-central-eastern coast and characterised by increased electrical conductivity, salinity, total dissolved solids, and pH; and (iv) cluster 4, Amisa, Esijama, and Muni beaches are situated in the central zone and characterised by high total suspended solids, phosphate, and nitrates and redox potential (Figure 3A). The grouping of the beaches suggests similar characteristics for a group of beaches due to the major influential physical and chemical composition of water quality.

Cluster analysis of only bacteria data (Figure 3B) also established four major groups of beaches, mainly (i) cluster 1: Kpeshi beach is a major contaminated beach with high loads of total coliform and *Escherichia coli*. The Kpeshi beach is situated on the central coast in the Greater-Accra region, Ghana. The beach is a tourism centre with two major hotels, La Beach Hotel and La Palm Hotel, and the location is densely populated communities along the coast. Discharges of sewage without adequate treatment can lead to high bacterial loads, i.e. (ii) cluster 2: Ghana-Côte d’Ivoire, Domonli, and Aboadzi less contaminated beaches characterised by oxygenation. These beaches are located in western region where the

Table 5 Pearson correlation (r) between environmental parameters and bacteria in beach waters of Ghana

Environmental parameters	Temp	EC	Sal	pH	O ₂	O ₂ Sat	Eh	TDS	TSS	Phos	Nit	Chl a	TC_w	<i>E. coli_w</i>	<i>Ent_sp_w</i>
Temp	1														
EC	−.049	1													
Sal	−.011	.995**	1												
pH	.114	.298	.278	1											
O ₂	.619	−.102	−.108	.058	1										
O ₂ Sat	.625	.099	.101	.186	.942**	1									
Eh	−.129	.274	.323	−.180	−.376	−.193	1								
TDS	.046	.948**	.956**	.271	.057	.302	.354	1							
TSS	−.083	−.440	−.421	−.040	−.454	−.451	−.138	−.406	1						
Phos	−.205	−.162	−.138	−.087	−.667*	−.600	.355	−.138	.818**	1					
Nit	.042	.190	.224	.033	−.281	−.078	.120	.322	.694*	.632	1				
Chl a	.050	−.080	−.041	−.061	−.041	−.098	−.260	−.158	.039	−.292	−.008	1			
TC_w	.441	.360	.350	.267	.379	.537	−.227	.496	.107	.014	.551	−.401	1		
<i>E. coli_w</i>	.176	.329	.346	.185	.429	.662*	.253	.604	−.080	−.022	.492	−.317	.633*	1	
<i>Ent_sp_w</i>	.212	.310	.330	.161	.449	.678*	.265	.590	−.079	−.025	.489	−.287	.612	.997**	1

The bold shows significant corrections between two variables

Temp temperature (°C), *EC* electrical conductivity (mS/cm), *Sal* salinity (PSU), *DO* dissolved oxygen concentration (mg/L), *DO Sat* saturation of dissolved oxygen (%), *Eh* redox potential (mV), *TDS* total dissolved solids, *TSS* total suspended solids (g/L), *Phos* phosphate (mg/L), *Nit* nitrates (mg/L), *Chl a* chlorophyll-a (µg/L), *Tcol_w* total coliforms in seawater (CFU/100 mL), *E. coli_w* *Escherichia coli* in seawater (CFU/100 mL), *Ent.spp_w* *Enterococcus* spp. in seawater (CFU/100 mL)

*Correlation is significant at the 0.05 level (2-tailed); **correlation is significant at the 0.01 level (2-tailed)

population may be low and less frequent beach users and hotels, i.e. (iii) cluster 3: Esiam, Muni, Anyanui, and Ghana-Togo border beaches with moderated contaminated beaches characterised by chlorophyll-a concentration may have minimal human impact; (iv) cluster 4: Amisa and Densu beaches with second major contamination are characterised by *Enterococcus* spp. and nitrates. Densu beach is situated in an area with high populated coastal vicinity and adjoining Densu beach Resort and Bojo beach coupled with a connection to Densu estuary and subsequent Densu river. The Amisa Beach is connected with Amisa estuaries and connecting the Amisa River. There are increasing human activities of fish farming, animal husbandry, and water transportation in these coastal systems, which can cause an increase in nutrients and bacteria load.

The principle component analysis (PCA) established spatial variability in sites due to specific environmental factors at a given beach (Figure 5A, B). The best ecological factors are nitrate and total dissolved solids (Table 4; Figure 6). These ecological factors influenced the spatial distribution and abundance of bacteria in the study beaches. *Enterococcus* is mostly abundant in Esiam beach influenced by nitrated enrichment of the seawater (Figure 5A). Increased bacteria loads measured at the nearshore waters of Densu and Kpeshi beaches could be due to the increased concentration of total dissolved solids of seawater, high population of coastal communities,

and increased human activities such as industries, agriculture farming, and coastal tourisms, frequent beachgoers. and major hotels situated in this central zone (Figure 5A). Pearson correlation shows strong linearity between salinity, conductivity, and total dissolved solids (Table 5). The combination of cluster and Pearson correlation established a significant linear association among the bacteria (Table 5; Figure 4A). Both correlation and ordination analyses established an association between environmental factors and bacteria in beach water.

Bacterial water quality

Total coliforms, *Escherichia coli*, and *Enterococcus* were low in Anyanui beach but high at Densu and Kpeshi beaches (Table 1). The small communities with limited waste discharges have contributed to the low contamination at Anyanui beach. The major polluted beaches, Densu and Kpeshi, are characterised by densely populated human settlements. Large industries, beach resorts and hotels, coastal fishing communities, beach tourism, animal husbandry, and agricultural farming surround the catchments of these two beaches. The possible contamination sources, including untreated disposal of human and animal waste and runoff from agricultural farmlands, may affect the beach water quality in these localities (Islam et al. 2004, Pandey et al. 2014). Contamination of water bodies is a serious environmental

issue since it can affect the ecosystem's health and human health (Parmar et al. 2016, Sabae and Rabeh 2007, Scheren and Ibe 2002). The faecal sources of contamination can be animal or human waste (Domingo and Edge 2010, Dufour et al. 2012, Newton et al. 2013). Most faecal material reaches water bodies either indirectly through discharge after treatment or directly by being washed off the surface by rainfall or through defecation directly into water bodies (Daniel et al. 2000, Devane et al. 2020, Dufour et al. 2012, Karikari and Ansa-Asare 2006). This faecal material can carry pathogenic microbes that may pose a risk to humans exposed to contaminated surface water (Devane et al. 2020, Dufour et al. 2012, Osiero et al. 2019, Wheeler et al. 1979). In south-east Nigeria, maximum bacterial colony count (up to 6×10^4 CFU/100 mL) and the largest variability were found in mesotidal estuaries and adjoining nearshore waters (Anita and Showell 1997). In this study, some limitations are due to the short duration of the research. However, the detection of *Escherichia coli* and *Enterococcus* spp. in the coastal beach waters in Ghana provides enough evidence of faecal pollution, possibly due to animal and human waste sources.

The health of human populations depends on the health of fresh and marine water resources. The coastal communities rely heavily on coastal resources for their economic and social wellbeing. Increasing human activities are pathways for microbes to enter into the freshwater and marine ecosystems. Beach water quality is essential for public health and coastal tourism, linked to the “Sun, Sea and Sand” market and the need to quantify faecal indicator bacteria (Soto-Varela et al. 2021, Zhang et al. 2016). Total coliforms occur in animal intestines, sediment, water, and industrial waste (Osiero et al. 2019). *Escherichia coli* occurs in the gastrointestinal tract of warm-blooded animals and direct evidence of faecal contamination (Bergholz et al. 2011, Malla et al. 2018b, Niemela et al. 2003, Shields et al. 2015, Zhang et al. 2016). *Enterococcus* spp. are a subset of faecal streptococci and commonly present in the faeces of warm-blooded animals (Comejova et al. 2015, Moe et al. 1991). *Enterococcus* are more persistent in water than coliforms (Byappanahalli et al. 2012, Xue et al. 2018). They provide a different assessment of the transport of faecal contamination in water than coliforms because of their different shape and survival rate (Ecklumensah et al. 2019, USEPA 2002). These faecal bacteria in marine waters can indicate the possible presence of disease-causing bacteria, virus, and protozoans (Crowther et al. 2001, Korajkic et al. 2018, Price and Wildeboer 2017, Solic and Krstulovic 1992). These pathogens may pose health risks to beach swimmers and seafood consumption (Harwood et al. 2014, Rodrigues and Cunha 2017, Xue et al. 2018). Faecal bacteria can arise from multiple sources such as human and animal waste discharges (Savage 1905, Sayler et al. 1975, Schroeder and Wuertz 2003). *Escherichia coli* is mostly common in fresh and estuarine waters, whereas *Enterococcus* sp.

is common in marine water but both are good markers of faecal contamination (Akrong et al. 2019, Leclerc et al. 2001, Malla et al. 2018a, Pachepsky and Shelton 2011). Agriculture runoff and domestic sewage waste water are often associated with high loads of bacteria (Schroeder and Wuertz 2003, Solo-Gabriele et al. 2000). Environmental parameters (thus salinity, temperature, nutrients, and light) can influence the survival and sometimes the proliferation of pathogens and bacteria (Cabral 2010, Edge et al. 2010, Herrig et al. 2019, Pommepuy et al. 2005). Other issues such as climate change such as sea level rise causing coastal flooding and storms runoff may affect beach water quality and cause water borne diseases and illness (Buckerfield et al. 2019, Holcomb and Stewart 2020, Pandey et al. 2014, Weiskerger et al. 2019, Xue et al. 2018). The faecal bacteria organisms such as *E. coli* are often used to detect the presence of perilous faecal pollution and recognised as valuable biomarkers for water quality assessment (Odonkor and Ampofo 2013, Shrestha et al. 2020, Wright et al. 2004, Yeleliere et al. 2018b). Faecal indicator organisms in coastal waters are a growing concern for environmental and human health (Idalia and Franco 2017, Odonkor and Ampofo 2013, Rodrigues et al. 2019, Whitman et al. 2003). Total coliform, *Escherichia coli*, and *Enterococcus* sp. bacteria are used to indicate pathogens of faecal origin in surface and coastal water bodies (Table 2) (Berthe et al. 2013, Guillaud et al. 1997, Ling et al. 2018, Medema et al. 2003, Noble et al. 2003). *Escherichia coli* and *Enterococcus* sp. occurs in intestinal bacteria of warm-blooded animals (Carson et al. 2001, Schönheit et al. 2016, Sinton et al. 1998). Their presence in coastal waters serve as an indicator of potential sewage pollution (Ahmed et al. 2019, Efstratiou 2001, Eichmiller et al. 2013, Oster et al. 2014) Total coliform numbers include non-faecal bacteria, so additional testing is often done to confirm the presence and numbers of faecal indicator bacteria as best markers of faecal pollution (Bettelheim 2003, Leclerc et al. 2001, Maipa et al. 2001, Vantarakis et al. 2006). *Escherichia coli* is the main marker of faecal pollution (Alm et al. 2011, Nowicki et al. 2021, Quilliam et al. 2019, Stewart et al. 2008). But faecal enterococci are also used as complementary microbiological water quality indicator (Byamukama et al. 2000, Katukiza et al. 2013, Maipa et al. 2001, Oster et al. 2014).

Escherichia coli and *Enterococcus* sp. in waters originate from domestic and animals waste discharges (Abdelzaher et al. 2013, Bauer and Alm 2012, Boehm and Sassoubre 2014, Ferguson et al. 2005, Schroeder and Wuertz 2003). Waterborne diseases may impact public health (Beaudeau et al. 2008, Fong and Lipp 2005, Jang et al. 2017, Mwabi et al. 2012). Bacteria in water can transmit diseases such as cholera, typhoid fever, bacillary dysentery, and diarrhoea (Cabral 2010, Drasar 2003, Harwood et al. 2014, Pitkänen 2013). The total coliform abundance in water (mean $4.06 \times 10^3 \pm 4.15 \times 10^3$) exceeded the mandatory levels for the water

quality for swimming from most countries (Table 3). The mean total coliforms ranged between 1.14×10^3 and 1.89×10^3 (CFU/100 mL), while the faecal coliforms ranged between 3.36×10^2 and 7.39×10^2 (CFU/100 mL). When comparing with WHO standards (WHO 2008), the results suggest that the sanitary quality of the beach water is unacceptable. In the USEPA, marine recreational water quality criterion for enterococci in water is not more than 1.04×10^2 (CFU/100 mL) (single-sample standard) and 3.5×10^1 (CFU/100 mL) (geometric mean standard) (USEPA 2011). In the EU, bathing water standards for enterococci range from limits of 1.0×10^2 – 4.0×10^2 (CFU/100 mL), depending on whether the beach is marine or fresh and whether the beach is rated as excellent or sufficient ((EU 2006).

In previous studies, the abundance of bacteria (total coliforms, *Escherichia coli* and *Enterococcus* spp.) in water does not differ from sediments in Densu estuary (Akita et al. 2020). However, high numbers of faecal indicator bacteria (*Escherichia coli* and *Enterococcus* spp.) were found close to landfill sites than seawards suggesting landward contamination sources (Akita et al. 2020). Furthermore, *Escherichia coli* was dominance in water than in sediment while *Enterococcus* spp. were higher in the sediment than water in Densu estuary (Akita et al. 2020). The faecal indicator bacteria in coastal waters arise from multiples sources such as diffuse sources, industrial and domestic sewage discharges, runoff from agricultural and livestock farms (Buckerfield et al. 2019, Kay et al. 1999a, Wyrer et al. 1998), migratory shore birds (Jones and Obiri-Danso 1999), and point sources directly at sea.

Bacteriological water quality shows variation according to the magnitude of such inputs, the flux and dispersion of organisms as a result of nearshore hydrodynamics, and the rate of die-off consequences of exposure to UV light (Davies-Colley et al. 1994, Solic and Krstulovic 1992). Microbial concentrations may differ along a particular stretch of the coast and can exhibit marked temporal fluctuations through the bathing season (Crowther et al. 2001, Kay et al. 1999b, Love et al. 2014, Obiri-Danso and Jones 1999). Anthropogenic activities (e.g. land-use activities, sewage discharges) increasingly deteriorate water quality in Ghana (Lawson 2014). Untreated effluents discharges directly at coast can contribute to the microorganisms in the seawater, and the microbes can be transported in the food chain (Fleisher et al. 1996, Haas 2001, Metcalf 1982, Nuzzi and Buhrens 1997, Pommepuy et al. 2005). Bacteria pollution may impose potential health hazards and seafood contamination via transfer in the food chain. The presence of pathogenic microorganisms from sewage discharges leads to human and animal related diseases in the seawater and seafood (Malakoff 2002, Pandey et al. 2014, Poloczanska et al. 2016). Bacteriological and epidemiological studies (Table 6) suggest health risks in swimming contaminated marine coastal waters

(Efstratiou 2001, Ferguson et al. 2005, Godfree et al. 1997, Rodrigues and Cunha 2017, WHO 2002, Xue et al. 2017). There are also acceptable bacteria loads such as total coliforms for swim bathing water (Table 6). For instance, human enteric viruses such as norovirus, astrovirus, rotavirus, hepatitis A virus, and pathogenic bacteria including *Salmonella*, *Listeria monocytogenes*, Shiga toxin-producing *Escherichia coli* (Table 6) *Vibrio cholerae*, and *Vibrio parahaemolyticus* causing diseases were associated with faecal contamination in coastal waters (Bosch et al. 2001, Grimes 1991, Kong et al. 2002, Metcalf 1978, Pandey et al. 2014, Rothenheber 2017, Tiwari et al. 2021).

Microorganisms can cause infections such as gastrointestinal and respiratory illnesses, skin diseases, and eye infections (Gerba 2000, Griffin et al. 2003, Payment et al. 1991, Tawiah et al. 2012, Tiwari et al. 2021, VanMensel et al. 2019). High concentration of *E. coli* ($\sim 3.7 \times 10^2$ – 2.4×10^4 CFU/100 mL) is associated with diseases outbreak. High levels of enterococci were observed after significant rainfall events, in 36 samples (35.6%) that exceeded USEPA's statistical threshold value of 1.3×10^2 (CFU/100 mL) (Dufour et al. 2012, Dufour 1984, Dufour 2001, EPA 1986). The US Public Health Service used epidemiology to detect swimming-associated illness with total coliform levels of 2.3×10^3 (CFU/100 mL) (Dufour et al. 2012, Dufour 1984, Dufour 2001, EPA 1986). An acceptable bacteria load (e.g. total coliforms) for swim bathing waters varies from country to county (Efstratiou 2001, 2018). For example, in the USA, single-sample standards are total coliforms, 10.0×10^3 (CFU/100 mL), and *E. coli*, 1.04×10^2 (CFU/100 mL) (Dufour et al. 2012, Dufour 1984, Dufour 2001, EPA 1986).

In regard to the water quality of beaches in the long department of Atlántico (Caribbean Sea of Colombia), a study observed that *E. coli* counts ranged from 0×10^0 to 2.4×10^2 (CFU/100 mL) with higher values close to urban areas (Soto-Varela et al. 2021). On the other hand, a similar study in the same region but northern part established the highest values of *E. coli* $\geq 5.0 \times 10^2$ (CFU/100 mL) in beaches located at urban areas (e.g. Salgar, Pradomar, Puerto Colombia, and Northern zone of Puerto Velero) but low values between 1.6×10^1 and 5.4×10^1 (CFU/100 mL) in beaches located in rural areas (Sabanilla and the southern zone of Puerto Velero) (Moreno et al. 2019).

The study demonstrated the environmental factors such as nitrates and total dissolved solids significantly controlled the spatial abundance of bacteria in beach seawater. The survival of most bacteria in seawater is also dependent on salinity, temperature, pH, solar radiation, and other factors (Boehm et al. 2018, Hirn et al. 1980, Johnson 2011, Maipa et al. 2001). PH influenced the spatial fluctuations of faecal bacteria at the Densu estuary (Akita et al. 2020). The local environmental factors contribute to the abundance of bacteria in beach water. Faecal indicator bacteria in the water column are

Table. 6 The bacteriological and epidemiological studies in seawater

Indicators examined	Pathogens examined	Indicator/pathogen correlating	Symptoms	Country	Source
TC	Salm	TC/Salm	GI	UK	PHILS (1959)
<i>E. coli</i>	Salm	<i>E. coli</i> /Salm		Denmark	Grunnet (1969)
ent, <i>E. coli</i>	-	ent	Ear	USA	Cabelli (1982)
TC, <i>E. coli</i> , ent, TVC	Salm, <i>S. aur</i> , Campobacteria Salm	TC, <i>E. coli</i> , ent, TVC/Salm, FC, Cl, perf/Salm	-	Greece	Papadakis (1988)
TC, FC, FS	Salm	TC, FC, FS/Salm	-	Spain	Polo (1996)
TC, ent, <i>E. coli</i>	<i>V.vuln</i>	TC, ent/ <i>V.vuln</i>	-	Denmark	Hoi (1998)
FC, <i>E. coli</i> , ent, staph, coliph	-	-	-	South Africa	Von Schimding (1993)
<i>E. coli</i> , staph		<i>E. coli</i> /staph	S/GI	Hong Kong	Chenug (1990)
ent, <i>E. coli</i>	-	Ent/ <i>E. coli</i>	GI	Egypt	El Sharkawi and Hassan (1982)
Tcol_w, <i>E. coli</i> _w, <i>Ent. spp</i> _w.	-	Tcol_w/ <i>E. coli</i> _w, <i>E. coli</i> _w/ <i>Ent. spp</i> _w		Ghana	This study

The bold illustrate our contribution to knowledge in what has been previously studied in other regions

TC total coliforms, *FC* faecal coliforms, *FS* faecal streptococci, *ent* enterococci, *E. coli* *Escherichia coli*, *Salm* *Salmonella* spp., *Cl.perf* *Clostridium perfringens*, *V.vuln* *Vibrio vulnificus*, *staph* staphylococci, *coliph* coliphages, *Tcol_w* total coliforms in seawater, *E. coli_w* *Escherichia coli* in seawater, *Ent. spp_w* *Enterococcus* spp. in seawater, *GI* gastrointestinal, *Ear* ear, *S* skin (modified from Godfree et al. 1997, Efstratiou 2001)

removed by adsorption and deposition through sedimentation (Whitman et al. 2011). The deposition of indicator bacteria is dependent on the association between bacteria and suspended particles (Whitman et al. 2011). Faecal indicator bacteria are also known as chemo-organotrophic bacteria, depending on the decay of organic compounds for food and growth (Maipa et al. 2001). Faecal pollution of water resources is a major concern for public health (Ercumen et al. 2011, Fleisher et al. 1996, Ishii and Sadowsky 2008, Sinigalliano et al. 2010, Wade et al. 2003). There are other pollutant pathogens such as streptococci, staphylococci, and pseudomonas (Johnson 2011). The number of bacterial species in bathing waters depends on other factors such as time of sampling, season, and collection location (Maipa et al. 2001, Obiri-Danso et al. 1999). Tracking sources for contamination, community education, beach hygiene, and local beach regulation plan can help prevent localised accumulation (Abdelzاهر et al. 2013). Integrating knowledge from multiple factors (e.g. bacteria, pathogens, ecology, and public health) would increase the understanding of pollution, possible potential causes of pollution and support coastal management planning to improve water quality (Pandey et al. 2014, WHO 2002). Beach monitoring is critical to detect early hazards to warn people to avoid swimming in contaminated waters to safeguard their well-being (Crank et al. 2019, Griffith et al. 2016, Wade et al. 2006). Overall, clean sanitation promotes clean water and protects life below water, leading to good health and well-being. Preventive measures include policy

reforms to regulate waste discharges, pollution pay principle, and penalty for pollution. Research on faecal indicator bacteria using genetic markers (Griffith et al. 2016, Korajkic et al. 2018, Xue et al. 2017) and identification of sources of bacteria in the Gulf of Guinea shall expand the understanding of contamination and potential human health risks. The sustainable development goals advocate for good health and well-being (SDG 3) and clean water and sanitation (SDG, 6) (Espey et al. 2015, Persson et al. 2016).

Conclusion

The Gulf of Guinea coast, Ghana, is faced with environmental problems such as water pollution. Beach water quality is examined for bacteria to combat swimming-associated illness. Ten beaches were quantitatively assessed for bacteria detection coupled with measurement of physical and chemical properties of near shore water to understand the status of coastal pollution. Anyanui beach is characterised by freshwater influence from the Volta River Lake system with less saline, whereas Densu beach showed higher saline conditions. The trophic state of beach waters ranged from ultra-oligotrophic to mesotrophic status. Muni beach is characterised by low Chl-a concentration, whereas high concentration occurs at Ghana-Togo border beach. Amisa beach is enriched with high nitrate concentration.

There is no significant variation ($p > 0.05$) in the measured environmental factors for the sampled season. However, multiple indicators (total coliforms, *Escherichia coli*, and *Enterococcus* spp.) showed pollution in the ten beaches. The study integrates physical and chemical characteristics of multiple beaches with an abundance of bacteria to understand ecological conditions favouring spatial fluctuation of the bacteria loads in near shore water. The mean \pm standard deviation of total coliforms ($4.06 \times 10^3 \pm 4.16 \times 10^3$) and faecal indicator bacteria (*Escherichia coli*, $7.06 \times 10^2 \pm 1.72 \times 10^3$ and *Enterococcus* spp., $.15 \times 10^2 \pm 1.75 \times 10^3$) suggest faecal contamination in the tropical coastal region of Ghana. There exists significant ($p < 0.05$) spatial variation in bacteria loads (total coliforms, *E. coli*, and *Enterococcus*) in the beach water. The Anyanui beach recorded low bacterial contamination, while Densu and Kpeshi beaches (highly populated central coastal areas) were highly contaminated. Beaches with similar bacteria loads and environmental characteristics of near shore water formed similar clusters. Environmental factors influenced spatial variation of bacteria abundance in the multiple beach study. Redundancy analyses suggest nitrates (55.3%) and total dissolved solids (17.2%) are the best environmental factors controlling the bacteria abundance in beach water. There exist significant ($p < 0.05$) associations between the bacteria (total coliforms, *Escherichia coli*, and *Enterococcus* spp.) and with environmental factors.

The presence of faecal indicator bacteria (FIB) (*Escherichia coli* and *Enterococcus* spp.) suggests that near shore coastal areas are recipients of contaminants and may affect water quality and beach users. Improved water quality is possible through improved sanitation (Bartram et al. 2014, Osiero et al. 2019, Yang et al. 2012).

The detection of bacteria in the beach water from multiple sites along the coast of Ghana is a concern for beach swimmers, coastal managers, and public health risks associated with contact with contaminated water. Furthermore, policy reforms regulating waste discharges into water resources will help prevent and protect the public from water pollution. The study provides environmental knowledge for improving beach water quality, a basis for safety precaution by beach swimmers, and future biomonitoring of coastal waters in the tropical Atlantic region.

Acknowledgements The authors will like to express deep gratitude to everyone who contributed to the success of the research, particularly Prof. Hartmut Stuetzel, Prof. Peter Frenzel, Dr. Hanna Wielandt, Frau Sylva Janning, Dr. John Moisan, and Emeritus Prof. John Farrington. Special thanks to the staff at the Department of Marine and Fisheries Sciences (DFMS), University of Ghana (UG), for providing space and field support. Profound thanks to anonymous reviewers for their constructive scientific comments, which improved upon the writing of the research paper.

Availability of data and materials The data is deposited at PANGAEA and can be made available for public use.

Author contribution

- Dr. Lailah Gifty Akita: conceptualization, data curation, statistical analyses, fund acquisition, and writing—original draft.
- Dr. Juergen Laudien: conceptualization, fund acquisition, and writing of review.
- Dr. Charles Biney: conceptualization and writing of the review.
- Mark Akrong: data curation and writing of the review.

Funding Volkswagen Foundation, Germany, financed the research to Lailah Gifty Akita, Junior Fellowship grant (Grant No. 89371).

Declarations

Ethical approval This article does not involve any human participants or animals in the authors' study.

Authors consent to participation in the project research

The authors were involved in the research participation and writing, and review.

Consent for publication The authors have no conflict of interest in the publication of the manuscript.

Conflict of interest The authors declare no competing interests.

References

- Abdelzاهر AM, Solo-Gabriele HM, Phillips MC, Elmir SM, Fleming LE (2013) An alternative approach to water regulations for public health protection at bathing beaches. *J Environ Public Health*:1–11
- Acheampong A, Mantey P, Weremfo A (2021) Potential impact of marine heatwaves on selected phytoplankton adapted to the Gulf of Guinea during stable hydrographic periods. *Afr J Mar Sci* 43:77–86
- Addico G, Amu-Mensah FK, Akrong M, Amu-Mensah MA, Darko H (2018) Phytoplankton species diversity and biomass and its impact on the sustainable management of Lake Bosomtwe in the Ashanti Region of Ghana. *Afr J Environ Sci Technol* 12:377–383
- Ahmed W, Zhang Q, Kozak S, Beale D, Gyawali P, Sadowsky MJ, Simpson S (2019) Comparative decay of sewage-associated marker genes in beach water and sediment in a subtropical region. *Water Res* 149:511–521
- Akita LG, Laudien J, Armah K (2014) Population dynamics and ecology of *Donax pulchellus* and *Donax rugosus* (Bivalvia: Donacidae) at exposed sandy beaches in Ghana. LAP Lambert Academic Publishing, Germany, 136 pp
- Akita LG, Laudien J, Akrong M, Biney CA, Nyarko E, Addo S (2020) Physicochemical influence on the spatial distribution of faecal bacteria and polychaetes in the Densu Estuary, Ghana. *Afr J Environ Sci Technol* 14:139–158
- Akrong MO, Amu-Mensah FK, Amu-Mensah MA, Darko H, Addico GND, Ampofo JA (2019) Seasonal analysis of bacteriological quality of drinking water sources in communities surrounding Lake Bosomtwe in the Ashanti Region of Ghana. *Appl Water Sci* 9:1–6
- Allersma E, Tilma MKW (1993) Ocean and coastal management. Coastal conditions in West Africa - a review, 199-124

- Alm EW, Walk ST, Gordon DM (2011): The niche of *Escherichia coli*. Population genetics of bacteria: a tribute to Thomas S Whittam. ASM Press, Washington, D.C.
- Anita EE, Showell JO (1997): Bacteria dynamics in mesotidal estuaries and adjoining nearshore waters, south-east Nigeria. In: Evans SM, Vanderpuye CJ, Armah AK (Hrsg.), The coastal zone of West Africa: problems and management. Penshaw Press, The Lawns, Undercliff, Cleadon Lane, Cleadon, Sunderland, SR6 7UX, U.K., pp. 246
- APHA (2012) Standard methods for examination of water and wastewater. American Public Health Association, Washington, 1360 pp
- APHA (2017) Standard methods for the examination of water and wastewater. APHA, Washington, DC
- Armah AK (1991) Coastal erosion in Ghana: causes, pattern, research needs, and possible solution. Coastal Zone 91:2463–2473
- Armah AK, Darpaah GA, G. W (1997) Managing the Coast of Ghana: problems and options. In: Evans SM, Vanderpuye CJ, Armah AK (Hrsg.), Penshaw Press, the Lawns, Undercliff, Cleadon Lane, Cleadon, Sunderland, SR6 7UX, U.K, pp. 426
- Armah AK, Amlalo DS (1998) Coastal zone profile of Ghana. Gulf of Guinea Large Marine Ecosystem Project, Ministry of Environment Science and Technology, Accra-Ghana
- Armah AK, Amlalo DS, Tetteh K, Wellens-Mensah J 2003: Ghana National report. Phase 1 integrated problem analysis, GEF MSP Sub-Sahara Africa Project (GF/6010-0016), Accra
- Armah AK, Wiafe G, Kpele DG (2005): Sea-level rise and coastal biodiversity in West Africa: a case study from Ghana. In: Low PK (Editor), Climate Change in Africa. Cambridge University Press, UK, pp. 204-215
- Bakun A (Editor), (1993) Global climate variations and potential impacts on the Gulf of Guinea Sardinella Fishery. Dynamics and use of Sardinella resources from upwelling off Ghana and Ivory Coast. Orstom 1995, Paris France, 60-85 pp
- Bartram J, Brocklehurst C, Fisher MB, Luyendijk R, Hossain R, Wardlaw T, Gordon B (2014) Global monitoring of water supply and sanitation: history, methods and future challenges. Int J Environ Res Public Health 11:8137–8165
- Bauer L, Alm E (2012) *Escherichia coli* toxin and attachment genes in the sand at Great Lakes recreational beaches. J Great Lakes Res 38:129–133
- Beaudeau P, De Valk H, Vaillant V, Mannschott C, Tillier C, Mouly D, Ledrans M (2008) Lessons learned from ten investigations of waterborne gastroenteritis outbreaks, France, 1998–2006. J Water Health 6:491–500
- Bellier E, Grotan V, Engen S, Schartau AK, Diserud OH, Finstad AG (2012) Combining counts and incidence data: an efficient approach for estimating the log-normal species abundance distribution and diversity indices. Oecologia 170:477–488
- Berendes DM, de Mondesert L, Kirby AE, Yakubub H, Adomakoc L, Michiel J, Rajb S, Robbb K, Wang Y, BDoe B, J. A, Moe CL (2020) Variation in *E. coli* concentrations in open drains across neighborhoods in Accra, Ghana: the influence of onsite sanitation coverage and interconnectedness of urban environments. Int J Hyg Environ Health 224:1–8
- Bergholz PW, Noar JD, Buckley DH (2011) Environmental patterns are imposed on the population structure of *Escherichia coli* after fecal deposition. Appl Environ Microbiol 77:211–219
- Berthe T, Ratajczak M, Clermont O, Denamur E, Petit F (2013) Evidence for the coexistence of distinct *Escherichia coli* populations in various aquatic environments and their survival in estuary water. Appl Environ Microbiol 79:4684–4693
- Bettelheim KA (Editor), (2003) The genus *Escherichia*. In the Prokaryotes: an evolving electronic resource for the microbiological community. Springer-Verlag, New York, NY, USA,
- Bienfang PK, DeFelice SV, Laws EA, Brand LE, Bidigare RR, Christensen S, Trapido-Rosenthal H, Hemscheidt TK, McGillicuddy Jr. DJ, Anderson DM, Solo-Gabriele HM, Boehm AB, Backer LC (2011): Prominent human health impacts from several marine microbes: history, ecology, and public health implications. International Journal of Microbiology 15
- Biney CA (1982) Preliminary survey of the state of pollution of the coastal environment of Ghana. Oceanol Acta 4:39–43
- Biney CA (1993) Coastal zone management in Accra, Reprinted for coastal lines of Western Africa. Proceedings, 8th Symposium on Coastal and Oceans Management, New Orleans, pp. 115-128
- Biney CA, Asmah R (2010) The effect of physico-chemical parameters on speciation of trace metals in sediments from inland and coastal waters of Ghana. Afr J Aquat Sci 25:299–305
- Boehm AB, Sassoubre LM (2014): *Enterococci* as indicators of environmental fecal contamination. In: M.S G, D.B. C, Ike Y (Editors), Enterococci: from commensals to leading causes of drug resistant infection, pp. 71–86.
- Boehm AB, Graham KE, Jennings WC (2018) Can we swim yet? systematic review, meta-analysis, and risk assessment of aging sewage in surface waters. Environ Sci Technol 52:9634–9645
- Bosch A, Sanchez G, Le Guyader F, Haugarreau L, Pinto R (2001) Human enteric viruses in Coquina clams associated with large hepatitis A outbreak. Water Sci Technol 43:61–65
- Boyer JN, Kelbe CR, Ortner PB, Rudnick DT (2009) Phytoplankton bloom status: chlorophylla biomass as an indicator of water quality condition in the southern estuaries of Florida, USA. Ecol Indic 9S: S56–S67
- Bray JR, Curtis JT (1957) An ordination of the upland forest communities of Southern Wisconsin. Ecol Monogr 27:325–349
- Bucci AF, Ciotti AM, Pollery RCG, de Carvalho RD, de Albuquerque HCD, Simão LTS (2012) Temporal variability of chlorophyll-a in the São Vicente Estuary. Braz J Oceanogr 60:485–499
- Buckerfield SJ, Quilliam RS, Waldron S, Naylor LA, Li S, Oliver DM (2019) Rainfall-driven *E. coli* transfer to the stream-conduit network observed through increasing spatial scales in mixed land-use paddy farming karst terrain. Water Research X 5
- Byamukama D, Kansime F, Mach RL, Farnleitner AHH (2000) Determination of *Escherichia coli* contamination with chromocult coliform agar showed a high level of discrimination efficiency for differing faecal pollution levels in tropical waters of Kampala, Uganda. Appl Environ Microbiol 66:864–868
- Byappanahalli MN, Nevers MB, Korajkic A, Staley ZR, Harwood VJ (2012) *Enterococci* in the environment. Microbiol Mol Biol Rev 76: 685–705
- Cabelli VJ, Dufour AP, McCabe LJ, and Levin MA (1982) Swimming-associated gastroenteritis and water quality. Am J Epidemiol 115: 606–616
- Cabral JPS (2010) Water microbiology. Bacterial pathogens and water. Int J Environ Res Public Health 7:3657–3703
- Carpenter SR, Caraco NF, Correll DL, Howarth RW, Sharpley AN, Smith VH (1998) Nonpoint pollution of surface waters with phosphorus and nitrogen. Ecol Appl 8:559–568
- Carson CA, Shear B, Ellersieck MR, Asfaw A (2001) Identification of Fecal *Escherichia coli* from humans and animals by ribotyping. Appl Environ Microbiol 67:1503–1507
- Chapman D (1996) Water quality assessment, London
- Cheung WHS, Hung RPS, Chang KCK, and Kleevens JW (1990) Epidemiological study of beach water pollution and health-related

- bathing water standards in Hong Kong. *Water Sci Technol* 23:243–252
- Clark RB (2000) Marine pollution. Clarendon Press, Oxford, 237 pp
- Cornejova T, Venglovsky J, Gregova G, Kmetova M, Kmet V (2015) Extended spectrum beta-lactamases in *Escherichia coli* from municipal wastewater. *Ann Agric Environ Med* 22:447–450
- Correl DL (1998) The role of phosphorus in the eutrophication of receiving waters: a review. *J Environ Qual* 27:261–266
- Crank K, Petersen S, Bibby K (2019) Quantitative microbial risk assessment of swimming in sewage impacted waters using CrAssphage and pepper mild mottle virus in a customizable model. *Environ Sci Technol Lett* 6:571–577
- Crouzet P, Leonard J, Nixon S, Rees Y, Parr W, Laffon L, Bøgestrand J, Kristensen P, Lallana C, Izzo G, Bokn T, Bak J, Lack TJ (1999) Nutrients in European ecosystems, European Environment Agency, Copenhagen
- Crowther J, Kay D, Wyer MD (2001) Relationships between microbial water quality and environmental conditions in coastal recreational waters: the Fylde coast, UK. *Water Res* 35:4029–4038
- Daniel TJ, T.C. D, Nichols DJ, West CP, Moore J, P.A, Wheeler GL (2000) Runoff water quality from poultry litter-treated pasture and forest sites *Journal of Environmental Quality* 29, 515–552
- Davies-Colley RJ, Bell RG, Donnison AM (1994) Sunlight inactivation of enterococci and faecal coliforms in sewage effluent diluted in seawater. *Appl Environ Microbiol* 60:2049–2058
- Devane ML, Moriarty E, Weaver L, Cookson A, Gilpin B (2020) Faecal indicator bacteria from environmental sources: strategies for identification to improve water quality monitoring. *Water Res* 185
- DFID (1999) A simple methodology water quality monitoring, Department for International Development Wallingford.
- Domingo SJW, Edge TA (2010) Identification of primary sources of faecal pollution. In: Pond K, Kay D, Bartram J, Domingo SJ (eds) Rees G. World Health Organization (WHO), IWA Publishing, London, UK, Safe management of shellfish and harvest waters, pp 51–90
- Dasar SB (Editor), (2003) Microbial flora of the gut. The handbook of water and wastewater microbiology. Academic Press, London, UK, 99–103 pp
- Dufour A, Wade TJ, Kay D (Editors), (2012) Epidemiological studies on swimmer health effects associated with potential exposure to zoonotic pathogens in bathing beach water – a review. *Animal Waste, Water Quality and Human Health*. World Health Organization (WHO), London, UK
- Dufour AP (1984) Bacterial indicators of recreational water quality. *Can J Public Health* 75:49–56
- Dufour AP (2001): Discussion of indicator thresholds. US EPA
- Ecklu-Mensah G, Sackey ST, Morrison HG, Sogin ML, Murphy LG, Reznikoff WS (2019) Assessment of bacterial diversity in western Accra, Ghana, drinking water samples. *J Water Sanit Hyg Dev* 9: 644–661
- Edge TA, Hill S, Seto P, Marsalek J (2010) Library-dependent and library independent microbial source tracking to identify spatial variation in faecal contamination sources along a Lake Ontario beach (Ontario, Canada). *Water Sci Technol* 62:719–727
- Efstratiou M (2001) Managing coastal bathing water quality: The contribution of microbiology and epidemiology. *Mar Pollut Bull* 46(6): 424–431
- Efstratiou MA (2001) Managing coastal bathing water quality: the contribution of microbiology and epidemiology. *Mar Pollut Bull* 42: 425–432
- Efstratiou MA (2018): Microorganisms in beach sand: health implications. In: Nriagu JO (Editor), *Encyclopedia of environmental health*
- Eichmiller JJ, Hicks R, Sadowsky MJ (2013) Distribution of genetic markers of fecal pollution on a freshwater sandy shoreline in proximity to wastewater effluent. *Environ Sci Technol* 47:3395–3402
- Elser JJ, Bracken MES, Cleland EE, Gruner DS, Harpole WS, Hillebrand H, Smith JE (2007) Global analysis of nitrogen and phosphorus limitation of primary producers in freshwater, marine and terrestrial ecosystems. *Ecol Lett* 10:1135–1142
- El Sharkawi F, and Hassan MNER (1982) The relation between the state of pollution in Alexandria swimming beaches and the occurrence of typhoid among bathers. *Bulletin of the High Institute of Public Health Alexandria* 12:337–351
- EPA (1986) Bacteriological ambient water quality criteria for marine and freshwater recreational waters, US EPA, Springfield, VA
- Ercumen A, Pickering AJ, Kwong LH, Arnold BF, Parvez SM, Alam M, Sen D, Islam S, Kullmann C, Chase C (2011) Animal feces contribute to domestic fecal contamination: evidence from *E. coli* measured in water, hands, food, flies, and soil in Bangladesh. *Environ Sci Technol* 5:8725–8734
- Espey J, Walecik K, Kuhner M (2015) Follow up and review of the SDGs: fulfilling our commitments. SDSN, Working Paper, UN Sustainable Development Solutions Network, New York, USA
- EU (2006) DIRECTIVE 2006/7/EC of the European Parliament and of the Council of 15 February 2006 concerning the management of bathing water quality and repealing Directive 76/160/EEC, 2006/7/EC. Off J Eur Union
- Fenwick A (2006) Waterborne infectious diseases—could they be consigned to history? *Science* 313:1077–1081
- Ferguson DM, Moore DF, Getrich MA, Zhouandai MH (2005) Enumeration and speciation of enterococci found in marine and intertidal sediments and coastal water in southern California. *J Appl Microbiol* 99:598–608
- Ferretti JA, Tran HV, Cosgrove E, Protonentis J, Loftin V, Conklin CS, Grant RN (2011) Comparison of *Enterococcus* density estimates in marine beach and bay samples by real-time polymerase chain reaction, membrane filtration, and defined substrate testing. *Mar Pollut Bull* 62:1066–1072
- Fleisher JM, Kay D, Salmen RL, Jones F, M. D. Wyer MD, Godfree AF (1996) Marine waters, contaminated with domestic sewage: nonenteric illnesses associated with bather exposure in the United Kingdom. *Am. J. Public Health* 86, 1228–1234
- Fong T-T, Lipp EK (2005) Enteric viruses of humans and animals in aquatic environments: health risks, detection, and potential water quality assessment tools. *Microbiol Mol Biol Rev* 69:357–371
- Gerba CP (2000) Indicator microorganisms. . In: Maier RM PI, Gerba CP. (Editor), *Environmental microbiology*. Academic Press, San Diego, CA., pp. 491–503
- Godfree AF, Kay D, Wyer MD (1997) Faecal streptococci as indicators of faecal contamination in water. *J Appl Microbiol (Symposium Supplementary)* 83:110S–119S
- Gökçe D (2016) Algae as an indicator of water quality. In: Thajuddin N (Editor), *Algae organisms for imminent biotechnology*. IntechOpen, pp. 81–99
- Gretsch SR, Ampof JA, Baker KK, Clennon J, Null CA, Peparah D, Reese H, Robb K, Teunis P, Wellington N, Yakubu H, Moe CL (2015) Quantification of exposure to fecal contamination in open drains in four neighborhoods in Accra, Ghana. *J Water Health*:1–13
- Griffin DW, Donaldson KA, Paul JH, Rose JB (2003): Pathogenic human viruses in coastal waters. 16, 129–143
- Griffith JF, Weisberg SB, Arnold BF, Cao Y, Schiff KC, J.M. CJ (2016) Epidemiologic evaluation of multiple alternate microbial water quality monitoring indicators at three California beaches. *Water Res* 94: 371–381

- Grimes DJ (1991) Ecology of estuarine bacteria capable of causing human disease: a review. *Estuaries* 14:345–360
- Grunnet K, and Brest Nielsen B (1969) Salmonella types isolated from the Gulf of Aarhus compared with types from infected human beings, animals, and feed products in Denmark. *Applied Microbiology* 18:985–990
- Guillaud JF, Derrien A, Gourmelon M, Pommepuy M (1997) T90 as a tool for engineers: interest and limits. *Water Sci Technol* 35:277–281
- Haas CN (2001): Comment on “estimating the infection risk in recreational waters from the faecal indicator concentration and from the ratio between pathogens and indicator.” *Water Res* 35, 3280–3281
- HACH (2012) *Water analysis handbook*, Hach Company, Loveland, Colorado, USA
- Hammer Ø, Harper DAT, Ryan PD (2001) PAST: Palaeontological statistics software package for education and data analysis. *Palaeontol Electron* 4:9
- Hardman-Mountford NJ, McGlade JM (2003) Seasonal and interannual variability of oceanographic processes in the Gulf of Guinea: an investigation using AVHRR sea surface temperature data. *Int J Remote Sens* 24:3247–3268
- Harwood VJ, Staley C, Badgley BD, Borges K, Korajkic A (2014) Microbial source tracking markers for detection of fecal contamination in environmental waters: Relationships between pathogens and human health outcomes. *FEMS Microbiol Rev* 38:1–40
- Haugland RA, Siefring SC, Wymer LJ, Brenner KP, Dufour AP (2005) Comparison of *Enterococcus* measurements in freshwater at two recreational beaches by quantitative polymerase chain reaction and member filter culture analysis. *Water Res* 39:559–568
- Herrig I, Seis W, Fischer H, Regnery J, Manz W, Reifferscheid G, Böer SP (2019) Prediction of fecal indicator organism concentrations in rivers: the shifting role of environmental factors under varying flow conditions. *Environ Sci Eur* 31:1–16
- Hinga KR, Jeon H, Lewis NF (1995) Marine eutrophication review part 1: quantifying the effects of nitrogen enrichment on phytoplankton in coastal ecosystems, NOAA Coast Ocean Office. Silver spring, MD, US Department of Commerce
- Hirn J, Viljamaa H, Raevuori M (1980) The effect if physicochemical phytoplankton and seasonal factors on faecal indicator bacteria in northern brackish water. *Water Res* 3:279–285
- Hoi L, Larsen JL, Dalsgaard I, and Dalsgaard A (1998) Occurrence of *Vibrio vulnificus* biotypes in Danish marine environments. *Applied and Environmental Microbiology* 64:7–13
- Holcomb DA, Stewart JR (2020) Microbial indicators of fecal pollution: recent progress and challenges in assessing water quality. *Curr Environ Health Rep* 7:311–324
- Idalia V-MN, Franco B (2017) *Escherichia coli* as a model organism and its application in biotechnology. In: Samie A (Editor), *Escherichia coli* - recent advances on physiology, pathogenesis and biotechnological applications. Intechopen, pp. 253-274
- Igobinosa EO, Okoh AI (2009) Impact of discharge wastewater effluents on the physico-chemical qualities of a receiving watershed in a typical rural community. *Int J Environ Sci Technol* 6:175–182
- Ishii S, Sadowsky M (2008) *Escherichia coli* in the environment: implications for water quality and human health. *Microbes Environ* 23: 101–108
- Islam MS, Khan S, Tanaka M (2004) Waste loading in shrimp and fish processing effluents: a potential source of hazards to the coastal and nearshore environments. *Mar Pollut Bull* 49:103–110
- Jaji MO, Bamgbose O, Odukoya OO, Arowlo TA (2007) Water quality assessment of Ogun River, south west Nigeria. *Environ Monit Assess* 133:447–482
- Jamshidi S, Bukar MNB, Yousefi M (2010) Concentration of chlorophyll-a in coastal waters of Rudсар. *Res J Environ Sci* 4: 383–391
- Jamshidi S, Abu Bakar NB (2011) A study on distribution of chlorophyll-a in the coastal waters of Anzali Port, south Caspian Sea. *Ocean Sci Discuss* 8:435–451
- Jang J, Hur HG, Sadowsky MJ, Byappanahalli MN, Yan T, Ishii S (2017) Environmental *Escherichia coli*: ecology and public health implications—a review. *J Appl Microbiol* 123:570–581
- Johnson TJ (2011) Impacts of fecal bacteria on pathogens and virulence genes-human and animal health. In: Sadowsky ML, Whitman RL (Editors), *The fecal bacteria*. American Society for Microbiology (ASM) Press, Washington, DC, pp. 135-164
- Jones K, Obiri-Danso K (1999) Non-compliance of beaches with the EU directives of bathing water quality: evidence of non-point sources of pollution in Morecambe Bay. *Journal of Applied Microbiology Symposium Supplementary* 85:101S–107S
- Jongman RHGG, ter Braak CJF, Tongeren OFR (Editors), 1995: *Data analysis in community and landscape ecology*. Cambridge University Press, Cambridge, 299 pp
- Karikari AY, Ansa-Asare OD (2006) Physico-chemical and microbial water quality assessment of Densu River of Ghana. *West Afr J App Ecol* 10:87–100
- Katukiza AY, Ronteltap M, van der Steen P, Foppen JW, Lens PN (2013) Quantification of microbial risks to human health caused by water-borne viruses and bacteria in an urban slum. *J Appl Microbiol* 116: 447–463
- Kay D, Wyer MD, Crowther J, O’Neill G, Jackson GF, Fleisher JM (1999a) Faecal indicators impact on recreational waters: budget studies and diffuse source modelling. *Journal of Applied Microbiology Symposium Supplementary* 85:70S–82S
- Kay D, Wyer MD, Crowther J, O’Neill G, Jackson GF, Fleisher JM, Fewtrell L (eds) (1999b) *Changing standards and catchment sources of faecal indicators in near shore bathing waters*. *Water Quality-Processes and Policy*. Wiley, New York, pp 47–64
- Kennish MJ (2001) Environmental threats and environmental future of estuaries. *Environ Conserv* 29:78–107
- Kinneer PR, Gray CD (1999) *SPSS for Windows made simple*. Psychology Press Ltd, Hove, United Kingdom
- Klubi E, Addo S, Akita LG (2019) Assessment of hydrological pathway and water quality of the Songor wetland. *Afr J Environ Sci Technol* 13:511–523
- Kong RYC, Lee SKY, Law TWF, Law SHW, Wu RSS (2002) Rapid detection of six types of bacterial pathogens in marine water by multiplex PCR. *Water Res* 36:2802–2812
- Korajkic A, McMinn BR, Harwood VJ (2018) Relationships between microbial indicators and pathogens in recreational water settings. *Int J Environ Res Public Health* 15:1–39
- Koranteng KA, McGlade JM (2002) Physico-chemical changes in continental shelf waters of the Gulf of Guinea and possible impacts on resources variability. In: McGlade MJ, Cury P, K.A. K, Hardman-Mountford NJ (Editors), *The Gulf of Guinea large marine ecosystem, environmental forcing & sustainable development of marine resources*. Large Marine Ecosystem Series. Elsevier, Amsterdam, pp. 93-102
- Labite H, Lunani I, van der Steen P, Vairavamoorthy K, Drechsel P, Lens P (2010) Quantitative microbial risk analysis to evaluate health effects of interventions in the urban water system of Accra, Ghana. *J Water Health* 8:417–430
- Lamptey E, Armah AK, Allotey LC (2010) *Spatial assemblages of tropical intertidal rocky shore communities in Ghana*. Nova Science Publishers, Inc, New York, West Africa, 52 pp

- Larbi L, Nukpezah D, Mensah A, Addo KA (2018): An integrated assessment of ecological health status of coastal aquatic ecosystems of Ada in Ghana. *West African Journal of Applied Ecology*
- Lawson ET (2014) When rhetoric meets reality: attitude change and coastal zone management in Ghana. *Environ Nat Resour Res* 4: 37–50
- Leclerc H, Mossel D, Edberg SC, Struijk CB (2001) Advances in the bacteriology of the coliform group: their suitability as markers of microbial water safety. *Annu Rev Microbiol* 55:201–234
- Leech NL, Barrett KC, Morgan GA (2011) IBM SPSS for introductory statistics: use and interpretation. Routledge -Taylor & Francis Group, New York, NY
- Legendre P, Gallagher ED (2001) Ecologically meaningful transformations for ordination of species data. *Oecologia* 129:271–280
- Ling F, Whitaker R, LeChevallie MW, Liu W-T (2018) Drinking water microbiome assembly induced by water stagnation. *ISME J* 12: 1520–1531
- López-López E, Sedeño-Díaz JE (2015) Biological indicators of water quality: the role of fish and macroinvertebrates as indicators of water quality. In: Armon RH, Hänninen O (eds) *Environmental indicators*. Springer, Dordrecht, pp 643–661
- Lorenzen CJ (1967) Determination of chlorophyll and pheo-pigments: spectrophotometric equations. *Limnol Oceanogr* 12:343
- Love DC, Rodriguez RA, Gibbons CD, Griffith JF, Yu Q, Stewart JR, Sobsey MD (2014) Human viruses and viral indicators in marine water at two recreational beaches in Southern California, USA. *J Water Health* 12:136–150
- Ly CK (1980) The role of the Akosombo dam on the Volta River in causing coastal erosion in central and eastern Ghana (West Africa). *Mar Geol* 37:323–332
- Maipa V, Alamanos Y, Bezirtzoglou E (2001) Seasonal fluctuation of bacterial indicators in coastal waters. *Microb Ecol Health Dis* 13: 143–146
- Malakoff D (2002) Water quality: microbiologists on the trail of polluting bacteria. *Science* 295:2352–2353
- Malla B, Shrestha RG, Tandukar S, Bhandari D, Inoue D, Sei K, Tanaka Y, Sherchand JB, Haramoto E (2018a): Identification of human and animal fecal contamination in drinking water sources in the Kathmandu valley, Nepal, using host-associated bacteroidales quantitative PCR assays. *Water* 10
- Malla B, Shrestha RG, Tandukar S, Bhandari D, Inoue D, Sei S, Tanaka Y, Sherchand JB, Haramoto E (2018b) Identification of human and animal fecal contamination in drinking water sources in the Kathmandu valley, Nepal, using host-associated bacteroidales quantitative PCR assays. *Water* 10:1–16
- McGarvey ST, Buszin J, Reed H, Smith DC, Rahman Z, Andrzejewski C, Awusabo-Asare K, White MJ (2008) Community and household determinants of water quality in coastal Ghana. *J Water Health* 6: 339–349
- McGlade JM, Curry P, Koranteng KA, Hardman-Mountford NJ (Editors), (2002) *The Gulf of Guinea large marine ecosystem: environmental forcing & sustainable development of marine resources*. Large Marine Ecosystems, 11. PublisherElsevier, Amsterdam, 392 pp
- Medema GJ, Payment P, Dufour A, Robertson W, Waite M, Hunter P, Kirby R, Anderson Y (2003) *Safe drinking water: an ongoing challenge*. IWA Publishing, London, UK, In assessing microbial safety of drinking water. Improving approaches and method. WHO & OECD, pp 11–45
- Mensah MA, Anang E (Editors), (1998) *The state of the coastal and marine environment of Ghana*. The state of coastal and marine environment of the Gulf of Guinea, 69-74 pp
- Metcalf TG (1978) Indicators of viruses in shellfish. Indicators and viruses in water and food. *Ann Harbor Science*, Ann Harbor, Michigan, pp 383–415
- Metcalf TG (1982) Virus in shellfish-growing waters. *Environ Int* 7:21–27
- Millipore (1991) *Water microbiology, laboratories and field procedures*. Bedford, M.A., 32 pp
- Minta SO (2003) An assessment of the vulnerability of Ghana's coastal artisanal fishery to climate change. Norwegian College of Fisheries Science (NFU) University of Tromsø, Norway
- Moe CL, Sobsey MD, Samsa GP, Mesolo V (1991) Bacterial indicators of rish diarrhoeal disease from drinking water in the Philippines. *Bull World Health Organ* 69:305–317
- Möller WAA, Scharf BW (1986) The content of chlorophyll-a in the sediment of the volcanic maar lakes in the Eifel region (Germany) as an indicator for eutrophication. *Hydrobiologia* 143:327–329
- Monbet Y (1992) Control of phytoplankton biomass in estuaries: a comparative analysis of microtidal and macrotidal estuaries. *Estuaries* 15:563–571
- Monney I, Boakye R, Buamah R, Anyemedu FOK, Odai SN, Awuah E (2013): Urbanization and pollution of surface water resources in the two largest cities in Ghana. *International Journal of Environmental Monitoring and Analysis* 1, 279-287
- Moreno HS, Bolívar-Anillo HJ, Soto-Varela ZE, Aranguren Y, González CP, Daza DAV, Anfuso G (2019) Microbiological water quality and sources of contamination along the coast of the Department of Atlántico (Caribbean Sea of Colombia). Preliminary results. *Mar Pollut Bull* 142:303–308
- Mwabi JK, Mamba BB, Momba MNB (2012) Removal of *Escherichia coli* and faecal coliforms from surface water and groundwater by household water treatment devices/systems: a sustainable solution for improving water quality in rural communities of the southern African development community region. *Int J Environ Res Public Health* 9:139–170
- Newton RJ, Bootsma MJ, Morrison HG, Sogin ML, McLellan SL (2013) A microbial signature approach to identify fecal pollution in the waters off an urbanized coast of Lake Michigan. *Microb Ecol* 65: 1011–1023
- Niemela SI, Lee JV, Fricker CR (2003) A comparison of the international standards organization reference method for the detection of coliforms and *Escherichia coli* in water with a defined substrate procedure. *J Appl Microbiol* 95:1285–1292
- Nixon SW (1995) Coastal marine eutrophication - a definition, social causes, and future concerns. *Ophelia* 41:199–219
- Noble RT, Moore DF, Leecaster M, McGee CD, Weisberg SB (2003) Comparison of total coliform, fecal coliform, and enterococcus bacterial indicator response for ocean recreational water quality testing. *Water Res* 37
- Nowicki S, deLaurent ZR, de Villiers EP, Githinji G, Charles KJ (2021) The utility of *Escherichia coli* as a contamination indicator for rural drinking water: evidence from whole genome sequencing. *PLoS One* 16:e0245910
- Nuzzi R, Buhrens R (1997) The use of enterococcus and coliforms in characterizing bathing-beach waters. *J Environ Health* 60:16–22
- Nyarko E, Lamptey AM, Owiredu-Amaning DA (2015) Application of water quality index for assessment of the nearshore coastal waters of Accra. *J Pollut Res* 34:657–666
- Obiri-Danso K, Jones K (1999) The effect of a new sewage treatment plant on faecal indicator numbers, campylobacters and bathing water compliance in Morecambe Bay. *J Appl Microbiol* 86:603–614
- Obiri-Danso K, Keith J, Nigel P (1999) The effect of the time of sampling on the compliance of bathing water in NW England with the EU Directive on bathing water quality. *J Coast Conserv* 5:51–58

- Odonkor ST, Ampofo JK (2013) *Escherichia coli* as an indicator of bacteriological quality of water: an overview. *Microbiol Res* 4
- Okafor-Yarwood I (2018) Pollution, fisheries and food (in)security in the Gulf of Guinea. In: Rosenblood R, Gupta A, Webster E (Hrsg.), *Transnational food security, transnational legal theory*. Transnational Law Institute, King's College London, UK
- Omoike AI, Vanloon GW (1999) Removal of phosphorus and organic matter removal by alum during wastewater treatment. *Water Res* 33: 3617–3627
- Osiemo MM, Ogendi GM, M'Erimba C (2019) Microbial quality of drinking water and prevalence of water-related diseases in marigat urban centre, Kenya. *Environ Health Insights* 13:1–7
- Oster RJ, Wijesinghe RU, Haack SK, Fogarty LR, Tucker TR, Riley SC (2014) Bacterial pathogen gene abundance and relation to recreational water quality at seven Great Lakes beaches. *Environ Sci Technol* 48:14148–14157
- Pabis K, Sobczyk R, Sicińska J, Ensrud T, Serigstad B (2020) Natural and anthropogenic factors influencing abundance of the benthic macrofauna along the shelf and slope of the Gulf of Guinea, a large marine ecosystem off West Africa. *Oceanologia* 62:83–100
- Pachepsky A, Shelton DR (2011) *Escherichia coli* and fecal coliforms in freshwater and estuarine sediments. *Crit Rev Environ Sci Technol* 41:1067–1110
- Paerl HW, Huisman J (2008) Blooms like it hot. *Science* 320:57–58
- Paerl HW, Xu H, McCarthy MJ, Zhu G, Qin B, Li Y, Gardner WS (2011) Controlling harmful cyanobacterial blooms in a hyper-eutrophic lake (Lake Taihu, China): the need for a dual nutrient (N & P) management strategy. *Water Res* 45:1973–1983
- Pandey PK, Kass PH, Soupir ML, Biswas S, Singh VP (2014) Contamination of water resources by pathogenic bacteria. *AMB Express* 4:1–16
- Papadakis JA, Mavridou A, Richardson SC, Lambiri M, and Velonakis E (1988) Relations between densities of indicator organisms and microbial pathogens in seawater. *Rapports, Commission Internationale pour l'Exploration Scientifique de la Mer Méditerranée* 31(2):177
- Parmar TK, Rawtani D, Agrawal YK (2016) Bioindicators: the natural indicator of environmental pollution. *Frontiers in Life Science* 9: 110–118
- Payment P, Richardson L, Siemiatycki J, Dewar R, Edwardes M, Franco E (1991) A randomized trial to evaluate the risk of gastrointestinal disease due to consumption of drinking water meeting current microbiological standards. *Am J Public Health* 81:703–708
- Persson A, Weitz N, Nilsson M (2016): Follow-up and review of the sustainable development goals: alignment vs. internalization. *Review of European Community & International Environmental Law* 25
- PHLS (1959) Sewage contamination of coastal bathing waters in England and Wales. The committee on bathing beach contamination of the Public Health Laboratory Service. *Journal of Hygiene, Cambridge* 57:435–472
- Piggot AM, Klaus JS, Johnson S, Phillips MC, Solo-Gabriele HM (2012) Relationship between *enterococcal* levels and sediment Biofilms at recreational beaches in South Florida. *Appl Environ Microbiol* 78: 5973–5982
- Pitkänen T (2013) Review of *Campylobacter* spp. in drinking and environmental waters. *J Microbiol Methods* 95:39–47
- Polo F, Figueras MJ, Inza I, Sala J, and Guarro J (1996) Do indicator organisms predict the presence of *Salmonella*? In *Proceedings of the 1996 Symposium on Health-Related Water Microbiology*. IAWQ, 6–10 October Mallorca, A54, p. 112
- Poloczanska ES, Burrows MT, Brown CJ, García Molinos J, Halpern BS, Hoegh-Guldberg O, Kappel CV, Moore PJ, Richardson AJ, Schoeman DS, Sydeman WJ (2016) Responses of marine organisms to climate change across oceans. *Front Mar Sci* 3:1–21
- Pommepeuy M, Hervio-Heath D, Caprais MP, Gourmelon M, Le Saux JC, Le Guyader F (2005) Fecal contamination in coastal areas: an engineering approach. *Oceans and health: pathogens in the marine environment*. Belkin and Colwell, Springer, New York, pp. 331–359
- Price RG, Wildeboer D (2017) *E. coli* as an indicator of contamination and health risk in environmental waters. In: Samie A (Editor), *Escherichia coli - recent advances on physiology, pathogenesis and biotechnological applications*. InTechOpen, pp. 125–139
- Prieto MD, Lopez B, Juanes JA, Revilla JA, Llorca J, Delgado-Rodríguez M (2001) Recreation in coastal waters: health risks associated with bathing in sea water. *J Epidemiol Community Health* 55:442–447
- Quaatey SNK (1996) Report on the synthesis of recent evaluations undertaken on the major fish stock in Ghanaian waters, Marine Fisheries Research Division, Fisheries Directorate of the Ministry of Food Agriculture, Tema, Ghana
- Quilliam RS, Taylor J, Oliver DM (2019) The disparity between regulatory measurements of *E. coli* in public bathing waters and the public expectation of bathing water quality. *J Environ Manag* 232:868–874
- Rao CR (1964) The use and interpretation of principal component analysis in applied research. *Sankhya* A26:329–358
- Rao CR (1973): *Linear statistical inference and its applications* Wiley New York, 625 pp
- Ripley B (1981) *Spatial statistics*. Wiley, New York, 252 pp
- Rodrigues A, Oliver DM, McCarron A, Quilliam RS (2019) Colonisation of plastic pellets (nurdles) by *E. coli* at public bathing beaches. *Mar Pollut Bull* 139:376–380
- Rodrigues C, Cunha MA (2017) Assessment of the microbiological quality of recreational waters: indicators and methods. *Euro-Mediterr J Environ Integr* 2:1–18
- Rothenheber D (2017) Microbial source tracking in coastal recreational waters of southern maine: relationship between *enterococci*, environmental factors, potential pathogens and fecal sources, University of Maine
- Saad MAH, Younes WAN (2006) Role of phosphorus and nitrogenous species in water quality of a coastal Egyptian heavily polluted Mediterranean basin. *Int J Oceans Oceanogr* 1:1–19
- Sabae SZ, Rabeh SA (2007) Evaluation of the microbial quality of the river Nile waters at damietta branch, Egypt. *Egypt J Aquat Res* 33: 301–311
- Sabino R, Rodrigues R, Costa I, Carneiro C, Cunha M, Duarte A, Faria N, Ferreira FC, Gargaté MJ, Júlio C, Martins ML, Nevers MB, Oleastro M, Solo-Gabriele H, Veríssimo C, Viegas C, Whitman RL, Brandão J (2014) Routine screening of harmful microorganisms in beach sands: implications to public health. *Sci Total Environ* 472:1062–1069
- Savage WG (1905) Bacteriological examination of tidal mud as an index of pollution of the river. *J Hyg* 5:146–174
- Sayler GS, Nelson JDJ, Justice A, Colwell RR (1975) Distribution and significance of fecal indicator organisms in the Upper Chesapeake Bay. *Appl Microbiol* 30:625–638
- Scheren P, Ibe AC, Janssen FJ, Lemmens AM (2002) Environmental pollution in the Gulf of Guinea - a regional approach. *Mar Pollut Bull* 44:633–641
- Scheren PAGM, Ibe AC (2002) Environmental pollution in the Gulf of Guinea - a regional approach. In: McGlade M, Curry P, Koranteng KA, Hardman-Mountford NJ (Editors), *The Gulf of Guinea large marine ecosystem: environmental forcing & sustainable development of marine resources Large Marine Ecosystems*. Elsevier., pp. 299–320
- Schönheit P, Buckel W, Martin WF (2016) On the origin of heterotrophy. *Trends Microbiol* 24:12–25

- Schroeder ED, Wuertz S (Editors), 2003: Bacteria. The handbook of water and wastewater microbiology. Academic Press, London, UK, 57–112 pp
- Sharpley AN, Jarvie HP, Buda A, May L, Spears B, Kleinman P (2013) Phosphorus legacy: overcoming the effects of past management practices to mitigate future water quality impairment. *J Environ Qual* 42: 1308–1326
- Shields KF, Bain RES, Cronk R, Wright JA, Bartram J (2015) Association of supply type with fecal contamination of source water and household stored drinking water in developing countries: a bivariate meta-analysis. *Environ Health Perspect* 123:222–231
- Shrestha A, Kelty CA, Sivaganesan M, Shanks OC, Dorevitch SF (2020) Fecal pollution source characterization at non-point source impacted beaches under dry and wet weather conditions. *Water Research* 182
- Shuval H (Editor), (2006) Thalassogenic infectious diseases caused by wastewater pollution of the marine environment. *Oceans and health: pathogens in the marine environment*. Springer, New York, 373–389 pp
- Sinigalliano CD, Fleisher JM, Gidley ML, Solo-Gabriele HM, Shibata T, Plano LR, Elmir SM, Wanless D, Bartkowiak J, Boiteau R (2010) Traditional and molecular analyses for fecal indicator bacteria in non-point source subtropical recreational marine waters. *Water Res* 44:3763–3772
- Sinton LW, Finlay RK, Hannah DJ (1998) Distinguishing human from animal faecal contamination in water: a review. *N Z J Mar Freshw Res* 32:323–348
- Šmilauer P, Lepš J (2014) *Multivariate analysis of ecological data using CANOCO 5*. Cambridge University Press, Cambridge, U.K.
- Smith VH, Schindler DW (2009) Eutrophication science: where do we go from here? *Trends Ecol Evol* 24:201–207
- Solic M, Krstulovic N (1992) Separate and combined effects of solar radiation, temperature, salinity and pH on the survival of faecal coliforms in sea water. *Mar Pollut Bull* 24:411–416
- Solo-Gabriele HM, Wolfert MA, Desmarais TR, Palmer CJ (2000) Sources of *Escherichia coli* in a coastal subtropical environment. *Appl Environ Microbiol* 66:230–237
- Soto-Varela ZE, Rosado-Porto D, Bolívar-Anillo HJ, Pichón González C, Granados Pantoja B, Estrada Alvarado D, Anuso G (2021) Preliminary microbiological coastal water quality determination along the department of Atlántico (Colombia): relationships with beach characteristics. *Journal of Marine Science and Engineering* 9, 1-
- Stewart MR, Gast RJ, Fujioka RS, Solo-Gabriele HM, Meschke SJ, Amaral-Zettler LA, Del Castillo E, Polz MF, Collier TK, Strom MS, Sinigalliano CD, Moeller PD, Holland AF (2008) The coastal environment and human health: microbial indicators, pathogens, sentinels and reservoirs. *Environ Health* S3:1–4
- Stumm W, Morgan JJ (1981) *Aquatic chemistry*. Sons, John Wiley and, 780 pp
- Tawiah AA, Gbedema SY, Adu F, Boamah VE, Annan K (2012) Antibiotic producing microorganisms from River Wiwi, Lake Bosomtwe and the Gulf of Guinea at Doakor Sea Beach, Ghana. *BMC Microbiol* 12:1–8
- ter Braak CJF, Verdonschot PFM (1995) Canonical correspondence-analysis and related multivariate methods in aquatic ecology. *Aquat Sci* 57:255–289
- Thoe W, Lee O, Leung K, Lee T, Ashbolt NJ, Yang R, Chui S (2018) Twenty five years of beach monitoring in Hong Kong: a re-examination of the beach water quality classification scheme from a comparative and global perspective. *Mar Pollut Bull* 131:793–803
- Tiwari A, Oliver DM, Bivins A, Sherchan SP, Pitkänen T (2021) Bathing water quality monitoring practices in Europe and the United States. *Int J Environ Res Public Health*:18
- Tripathy SC, Ray AK, Patra S, Sarma VV (2005) Water quality assessment of Gautami-Godavari mangroves estuarine ecosystem of Andhra Pradesh, India during September 2001. *J Earth Syst Sci* 114:185–190
- UNESCO 1994: Protocols for the Joint Global Ocean Flux Study (JGOFS) core measurements, manual and guide
- USEPA (2002) Method 1600: *Enterococci* in water by membrane filtration using membrane-*Enterococcus indoxyl-D-glucoside* agar (mEI), US Environmental Protection Agency, USEPA, Office of Water (4303T), Washington, DC.
- USEPA 2011: Ambient Water Quality Criteria for Bacteria
- VanMensel D, Chaganti S, Droppo IG, Weisener CG (2019) Exploring bacterial pathogen community dynamics in freshwater beach sediments: a tale of two lakes. *Environ Microbiol* 22:1–18
- Vantarakis A, Venieri D, Komninou G, Papapetropoulou M (2006) Differentiation of faecal *Escherichia coli* from humans and animals by multiple antibiotic resistance analysis. *Appl Microbiol* 42:71–77
- Vollenweider RA, Kerekes J (1982) Eutrophication of waters: monitoring, assessment and control, Report of the OECD Cooperative Programme on Eutrophication. OECD, Paris
- Von Schirming YER, Strauss N, Robertson P, Kfir R, Fattal B, Mathee A, Franck M, and Cabelli VJ (1993) Bather morbidity from recreational exposure to seawater. *Water Sci Technol* 27:183–186
- Wade TJ, Pai N, Eisenberg JN, J.M. CJ (2003) Do U.S. Environmental Protection Agency water quality guidelines for recreational waters prevent gastrointestinal illness? A systematic review and meta-analysis. *Environ Health Perspect* 111:1102–1109
- Wade TJ, Calderon RL, Sams E, Beach E, Brenner KP, Williams AH, Dufour AP (2006) Rapidly measured indicators of recreational water quality are predictive of swimming-associated gastrointestinal illness. *Environ Health Perspect* 114:24–28
- Wade TJ, Sams E, Brenner KP, Haugland R, Chem E, Beach M, Wymer L, Rankin CC, Love D, Li Q, Noble R, Dufour AP (2010) Rapidly measured indicators of recreational water quality and swimming-related illness at marine beaches: a prospective cohort study. *Environ Health* 9:1–14
- Weiskerger CL et al (2019) Impacts of a changing earth on microbial dynamics and human health risks in the continuum between beach water and sand. *Water Res* 162:1–58
- Wellman S, Redden A, Rissik D, Scanes P (2002) Phytoplankton production in near-pristine and urban-influenced coastal lagoons, Proceedings of the annual conference of the Australian Marine Sciences Association, 10-12 July, Fremantle WA.
- Welschmeyer NA (1994) Analysis of chlorophyll *a* in the presence of chlorophyll *b* and pheopigments. *Limnol Oceanogr* 39:1–7
- Wetzel RG (2001) *Limnology: lake and rivers ecosystems*. Academic Press, San Diego, CA
- Wheater DWF, Mara DD, Oragui JI (1979) Indicator systems to distinguish sewage from storm water run-off and human from animal faecal pollution. In: James A, Evison L (eds) *Biological indicators of water quality*. John Wiley & Sons, Chichester, pp 1–27
- Whitman RL, Shively DA, Pawlik H, Nevers MB, Byappanahalli MN (2003) Occurrence of *Escherichia coli* and *Enterococci* in *Cladophora* (Chlorophyta) in nearshore water and beach sand of Lake Michigan. *Appl Environ Microbiol* 69:4714–4719
- Whitman RL, Nevers MB, Przybyla-Kelly K, Byappanahalli MN (2011): Physical and biological factors influencing environmental sources of fecal indicator bacteria in surface water. In: Sadowsky MJ, Whitman RL (Editors), *The fecal bacteria*. American Society for Microbiology (ASM) Press, Washington, DC, pp. 111–134
- Whitman RL, Harwood VJ, Edge TA, Nevers MB, Byappanahalli MN, Vijayavel K, Brandão J, Sadowsky MJ, Alm EW, Crowe A (2014)

- Microbes in beach sands: integrating environment, ecology and public health. *Rev Environ Sci Biotechnol* 13:329–368
- WHO (2002) Guidelines for safe recreational water environments: coastal and freshwaters. World Health Organization, Geneva
- WHO (2008) Guidelines for drinking-water quality, incorporating 1st and 2nd agenda, volume 1, recommendations. World Health Organization, Geneva, Switzerland
- WHO (2011) World Health Organisation Guidelines for Drinking-Water Quality. Fourth Edition. Switzerland. 564pp.
- WHO (2015) Progress on sanitation and drinking water, World Health Organization (WHO). WHO, Geneva, Switzerland, p 2013
- Wiawe G, Boateng I, Appeaning-Addo K, Quashigah PN, Ababio SD, Sowah L (2013) Handbook of coastal process and management in Ghana. The Choir Press, The Coastal Processes Research Group, 254 pp
- Wintermans JFM, De Mots AS (1965) Spectrophotometric characteristics of chlorophylls a and b and their phaeophytins in ethanol. *Biochimica et al Biophysica Acta (BBA)* 109:448–453
- Wright J, Gundry S, Conroy RT (2004) Household drinking water in developing countries: a systematic review of microbiological contamination between source and point-of-use. *Tropical Med Int Health* 9:106–117
- Wyer MD, Kay D, Crowther J, Whittaker J, Spence A, Huen V, Wilson C, Carbo P, Newsome J (1998) Faecal-indicator budgets for recreational coastal waters: a catchment approach. *Journal Chartered Institute of Water Environmental Management* 12:414–424
- Xue J, Feng Y, Wijesinghe RU, Wood CW (2017) Using Bacteroidales genetic markers to assess fecal pollution sources in coastal waters. *Water Environ J* 32:84–93
- Xue J, Lin S, Lamar FG, Lamori JG, Sherchan S (2018) Assessment of fecal pollution in Lake Pontchartrain, Louisiana. *Mar Pollut Bull* 129:655–663
- Yang K, LeJeune J, Alsdorf D, Lu B, Shum CK, Liang S (2012) Global distribution of outbreaks of water-associated infectious diseases. *PLoS Negl Trop Dis* 6:1–9
- Yeleliere E, Cobbina SJ, Duwiejuah AB (2018a) Review of Ghana's water resources: the quality and management with particular focus on freshwater resources. *Appl Water Sci* 8:1–12
- Yeleliere E, Cobbina SJ, Duwiejuah AB (2018b) Review of Ghana's water resources: the quality and management with particular focus on freshwater resources. *Appl Water Sci* 8:1–12
- Zaghloul A, Saber M, Gadow S, Awad F (2020) Biological indicators for pollution detection in terrestrial and aquatic ecosystems. *Bull Natl Res Cent* 44:1–11
- Zhang Q, Eichmiller JJ, Staley C, Sadowsky MJ, Ishii S (2016) Correlations between pathogen concentration and fecal indicator marker genes in beach environments. *Sci Total Environ* 573:826–830

Publisher's note Springer Nature remains neutral with regard to jurisdictional claims in published maps and institutional affiliations.