



OPEN ACCESS

EDITED AND REVIEWED BY
Monique Messié,
Monterey Bay Aquarium Research
Institute (MBARI), United States

*CORRESPONDENCE

Joaquin Ortiz
jortiz@geomar.de

SPECIALTY SECTION

This article was submitted to
Marine Biogeochemistry,
a section of the journal
Frontiers in Marine Science

RECEIVED 08 August 2022

ACCEPTED 09 August 2022

PUBLISHED 22 August 2022

CITATION

Ortiz J, Arístegui J,
Hernández-Hernández N,
Fernández-Méndez M and Riebesell U
(2022) Corrigendum: Oligotrophic
phytoplankton community effectively
adjusts to artificial upwelling
regardless of intensity, but differently
among upwelling modes.
Front. Mar. Sci. 9:1014210.
doi: 10.3389/fmars.2022.1014210

COPYRIGHT

© 2022 Ortiz, Arístegui, Hernández-
Hernández, Fernández-Méndez and
Riebesell. This is an open-access article
distributed under the terms of the
[Creative Commons Attribution License
\(CC BY\)](#). The use, distribution or
reproduction in other forums is
permitted, provided the original
author(s) and the copyright owner(s)
are credited and that the original
publication in this journal is cited, in
accordance with accepted academic
practice. No use, distribution or
reproduction is permitted which does
not comply with these terms.

Corrigendum: Oligotrophic phytoplankton community effectively adjusts to artificial upwelling regardless of intensity, but differently among upwelling modes

Joaquin Ortiz^{1*}, Javier Arístegui²,
Nauzet Hernández-Hernández², Mar Fernández-Méndez^{1,3}
and Ulf Riebesell¹

¹Marine Biogeochemistry, Biological Oceanography, Geomar Helmholtz Centre for Ocean Research Kiel, Kiel, Germany, ²Oceanografía Biológica, Instituto de Oceanografía y Cambio Global, IOGAG, Universidad de Las Palmas de Gran Canaria, Las Palmas de Gran Canaria, Spain, ³Polar Biological Oceanography Section, Alfred Wegener Institute Helmholtz Centre for Polar and Marine Research, Bremerhaven, Germany

KEYWORDS

artificial upwelling, primary production, mesocosm, biomass, phytoplankton, oligotrophic

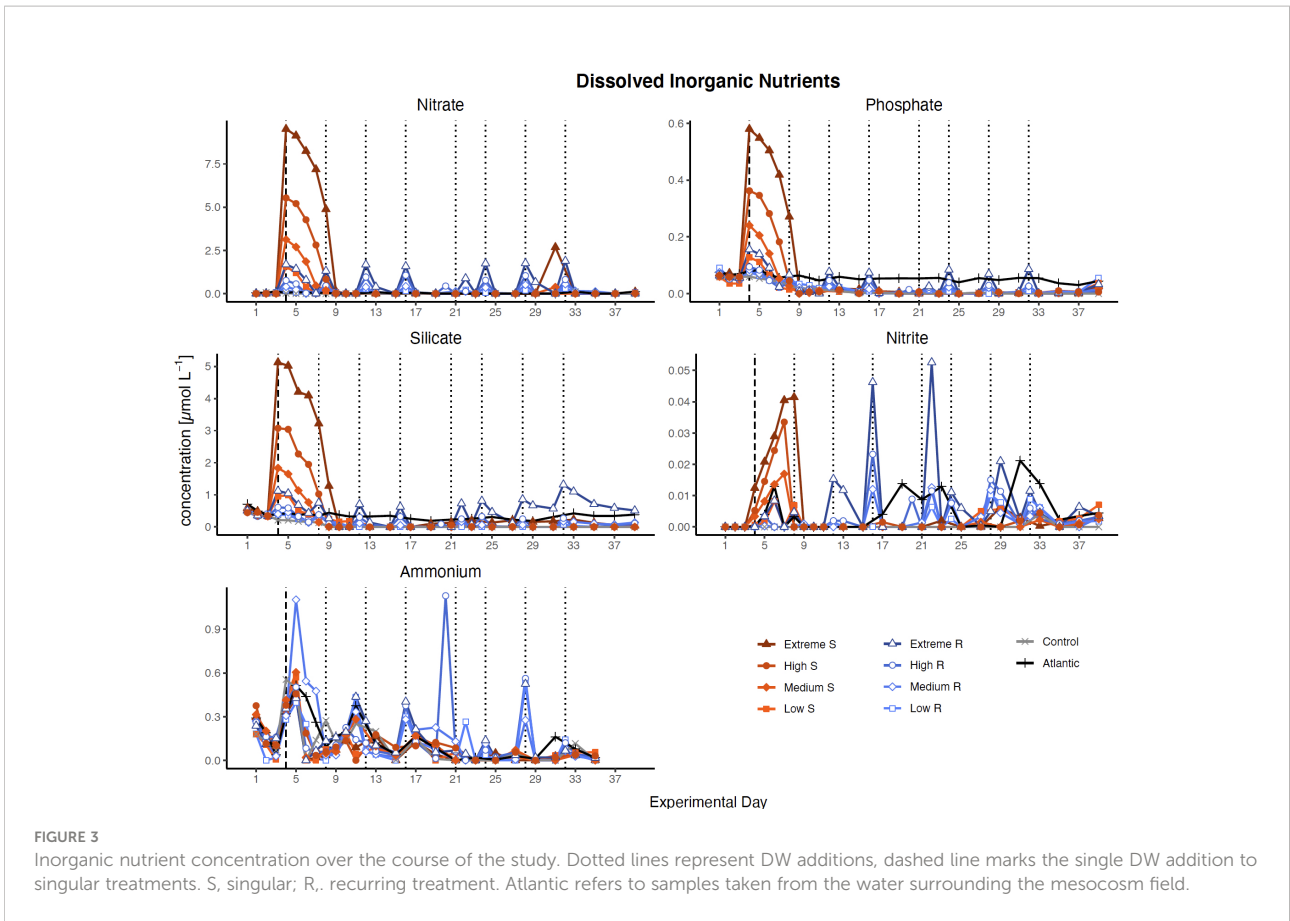
A corrigendum on

Oligotrophic phytoplankton community effectively adjusts to artificial upwelling regardless of intensity, but differently among upwelling modes

by Ortiz J, Arístegui J, Hernández-Hernández N, Fernández-Méndez M and Riebesell U (2022) *Front. Mar. Sci.* 9:880550. doi: 10.3389/fmars.2022.880550

In the published article, there was an error in [Figures 3, 4, 5 and 6](#) as published. The figures were moved and do not match the correctly positioned captions. The corrections for each figure/caption combination are listed below.

The authors apologize for these errors and state that this does not change the scientific conclusions of the article in any way. The original article has been updated.



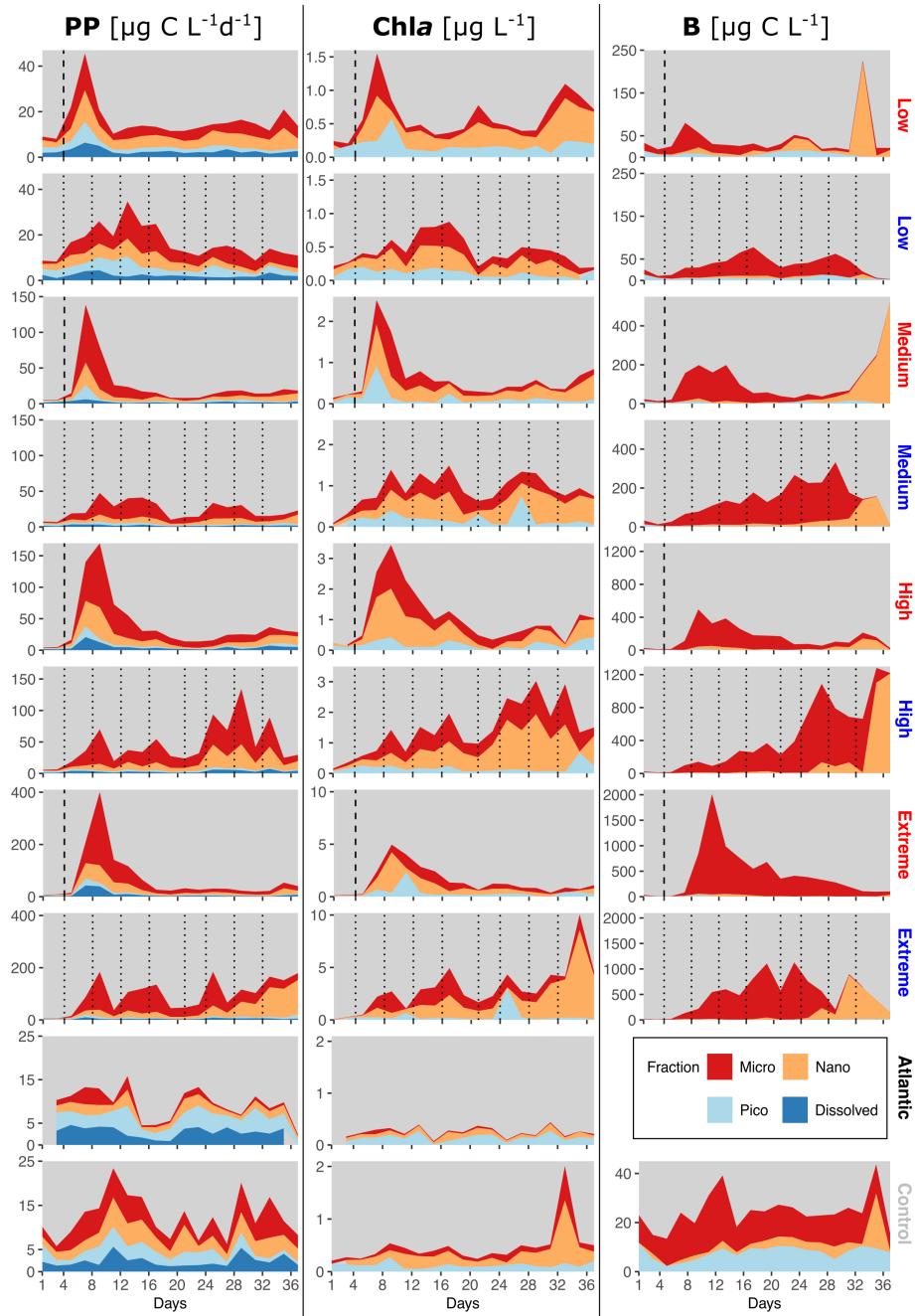


FIGURE 4
 Relative size class contributions of micro-, nano- and picoplankton to total PP rates, Chla concentration and phytoplankton C. PP plots also include PP_{DOC} rates. Mind the different y-axis scales. The blank spot in the Atlantic between d35-37 is due to one missing data point. Dotted lines represent DW additions, dashed line marks the single DW addition to singular treatments. Recurring treatments labelled in blue, singular in red.

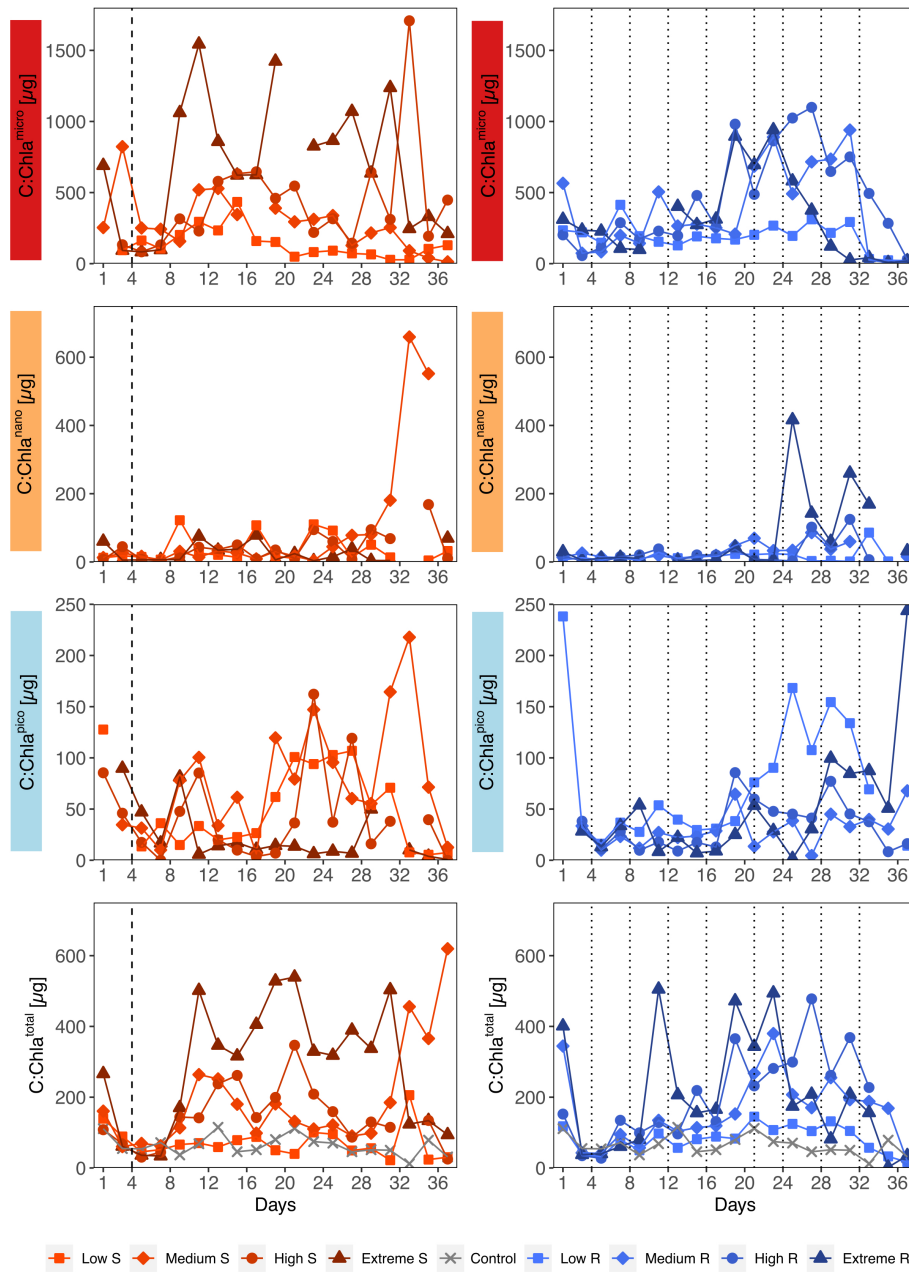


FIGURE 5

Temporal development of carbon to chlorophyll ratios (C:Chla) separated by size fractions and upwelling mode. S, Singular; R, Recurring. Mind the different y-axis scales. Dotted lines represent DW additions, dashed line marks the single DW addition to singular treatments.

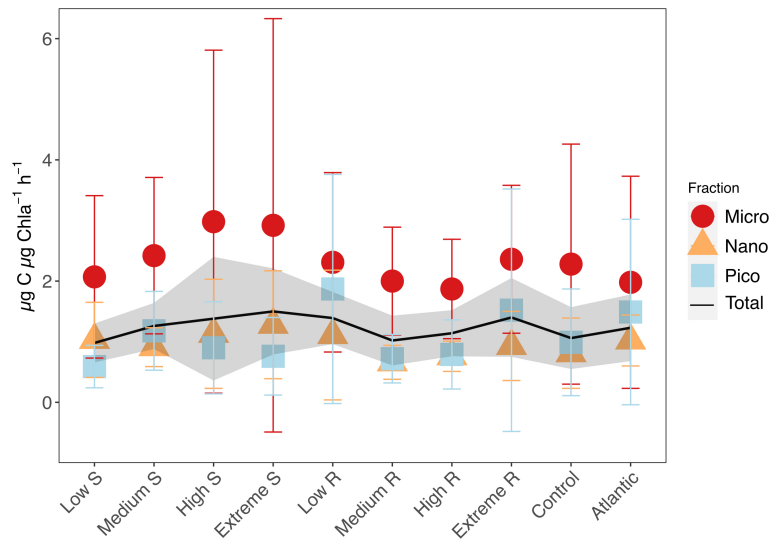


FIGURE 6
 Mean carbon assimilation numbers (AN) and standard deviations for total phytoplankton, microphytoplankton (20–250 μm), nanophytoplankton (2–20 μm) and picophytoplankton (0.2–2 μm). Shaded area shows standard deviation for total phytoplankton AN.

Publisher’s note

All claims expressed in this article are solely those of the authors and do not necessarily represent those of their affiliated

organizations, or those of the publisher, the editors and the reviewers. Any product that may be evaluated in this article, or claim that may be made by its manufacturer, is not guaranteed or endorsed by the publisher.